

How To...

Utilize a USB Jump Drive

Insert USB Jump Drive

Place the USB jump drive into the front USB ports of the computer



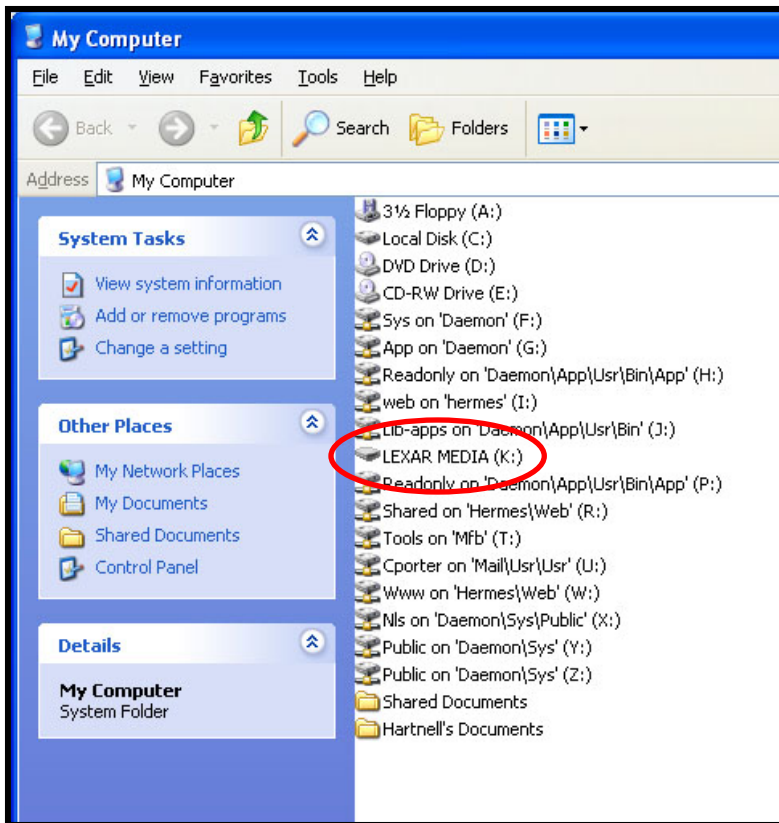
Next log-off the computer, when you log back in, the jump drive will be read by the computer, and a drive will be accessible inside My Computer



Double click My Computer and find the new drive (in our case K:)

How To...

Utilize a USB Jump Drive

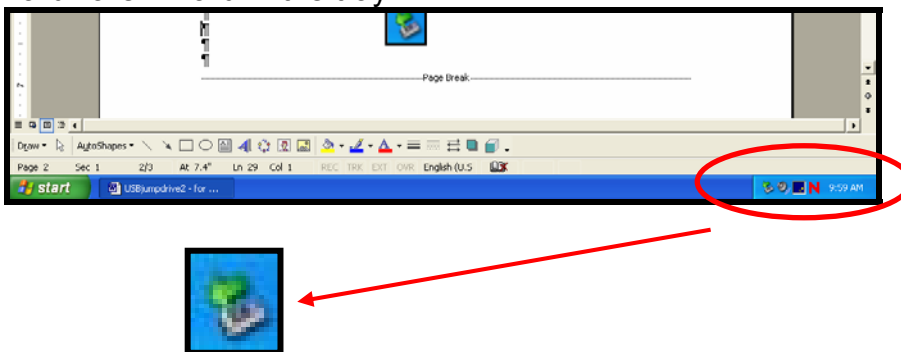


Double click that drive (the drive letter may be different) and access it like a normal folder
*Note: running files from the jump drive will be slower than files on the computer's hard drive - Also note the difference in drive's icon shape

Remove USB Jump Drive

It is VERY important to tell the computer to release the jump drive. If you do not, the computer could keep old drives open and/or your files may be corrupted.

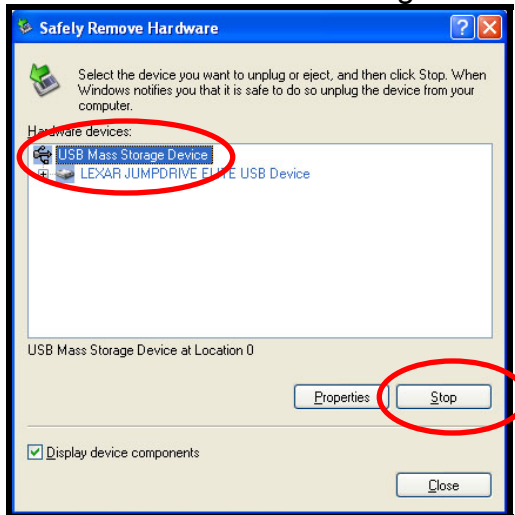
To remove the jump drive from the computer, double click the safely remove hardware wizard in the tray



How To...

Utilize a USB Jump Drive

Chose the USB Mass Storage Device and Stop



Then chose the USB jump drive (usually referred to as "generic drive" it will have the drive letter, in this case K:.) and OK



A bubble will appear telling that it is now safe to pull the jump drive from the USB slot

