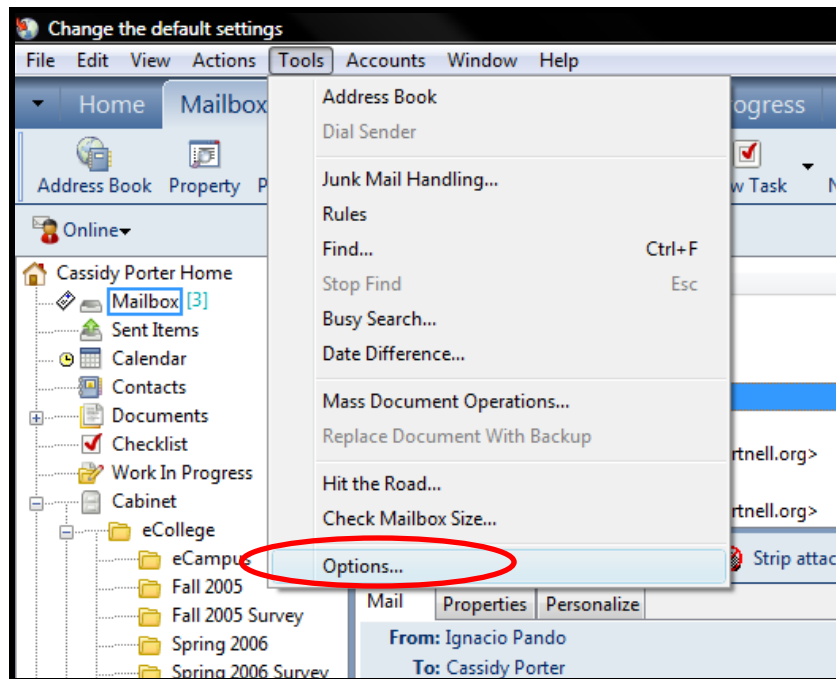


How to set your default view to HTML

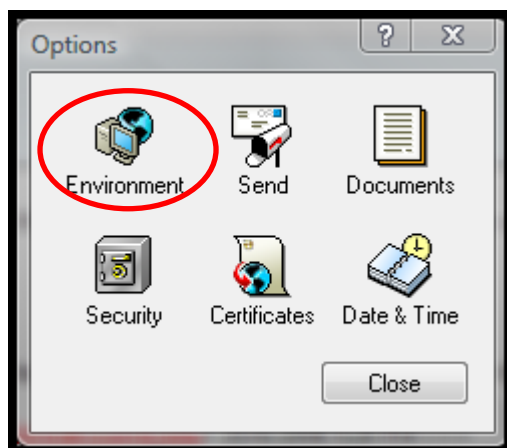
Step 1:

- Click “Tools and Options”



Step 2:

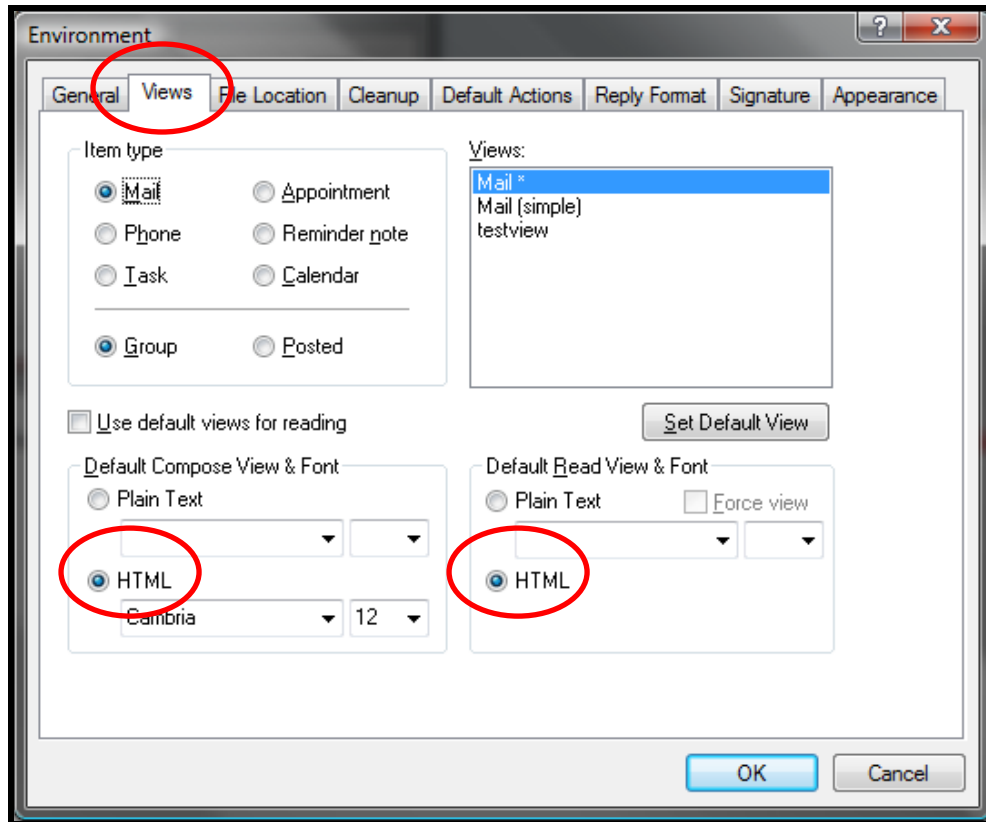
- Double click Environment



How to set your default view to HTML

Step 3:

- Choose the “Views” Tab
- Click the two “HTML” radial buttons at the bottom



Then choose a Font and Font size you want and click “OK”

**note: When choosing a font size stay between 10-12 and when choosing a font do not choose a font with special characters, curly letters, make sure it is easy to read.