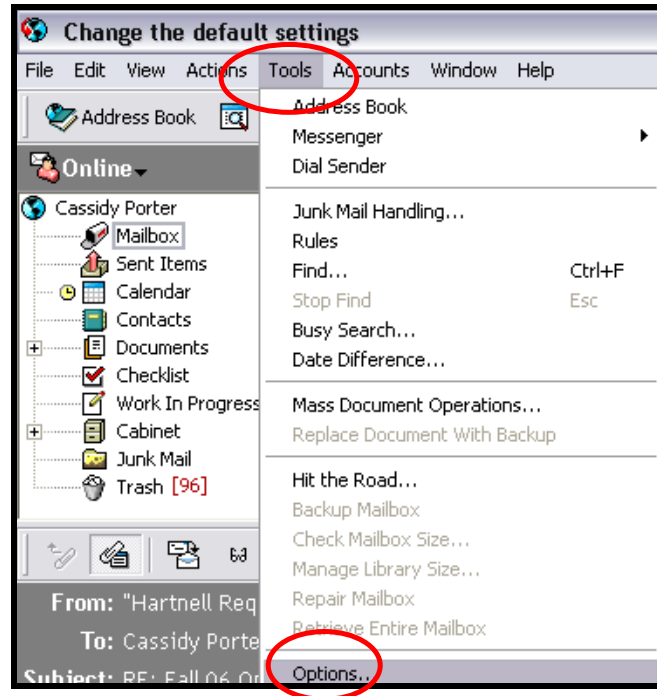


How to Stop GroupWise from Integrating with Microsoft Office

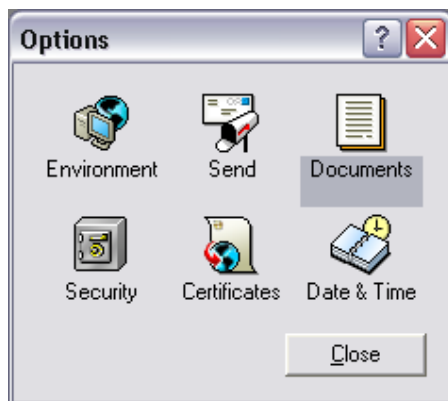
Step 1

- Using the menu bar, go to “tools” and chose “options”



Step 2

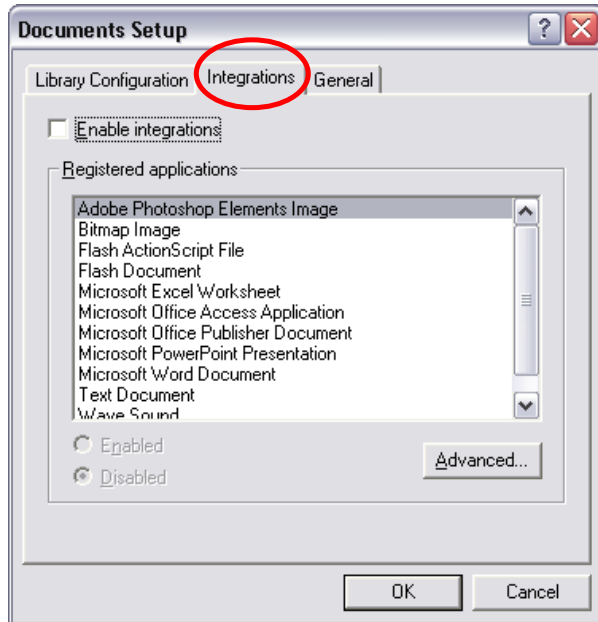
- Chose “Documents”



How to Stop GroupWise from Integrating with Microsoft Office

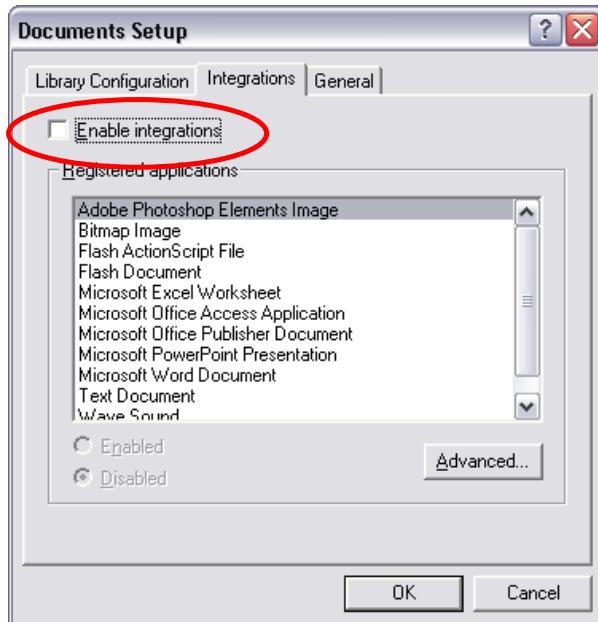
Step 3:

- Chose the “Integrations” tab



Step 4:

- Uncheck the “Enable integrations”



Step 5:

Click “Ok” and “Close”