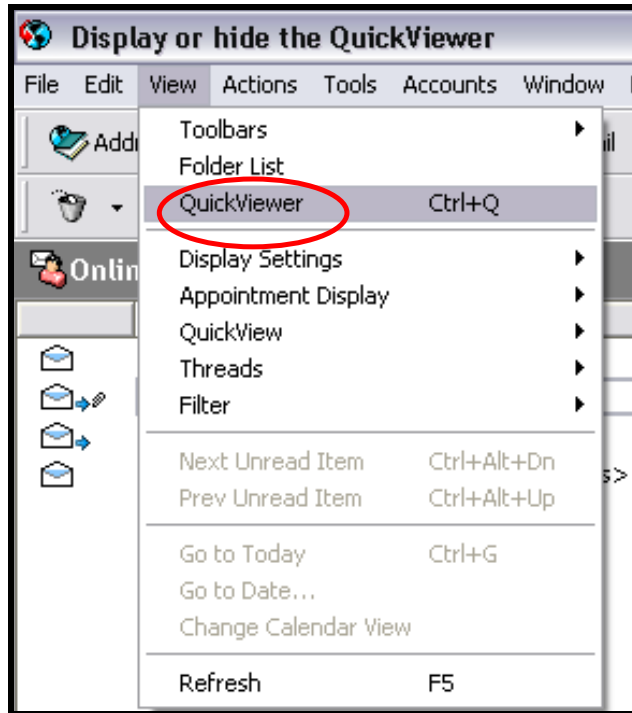


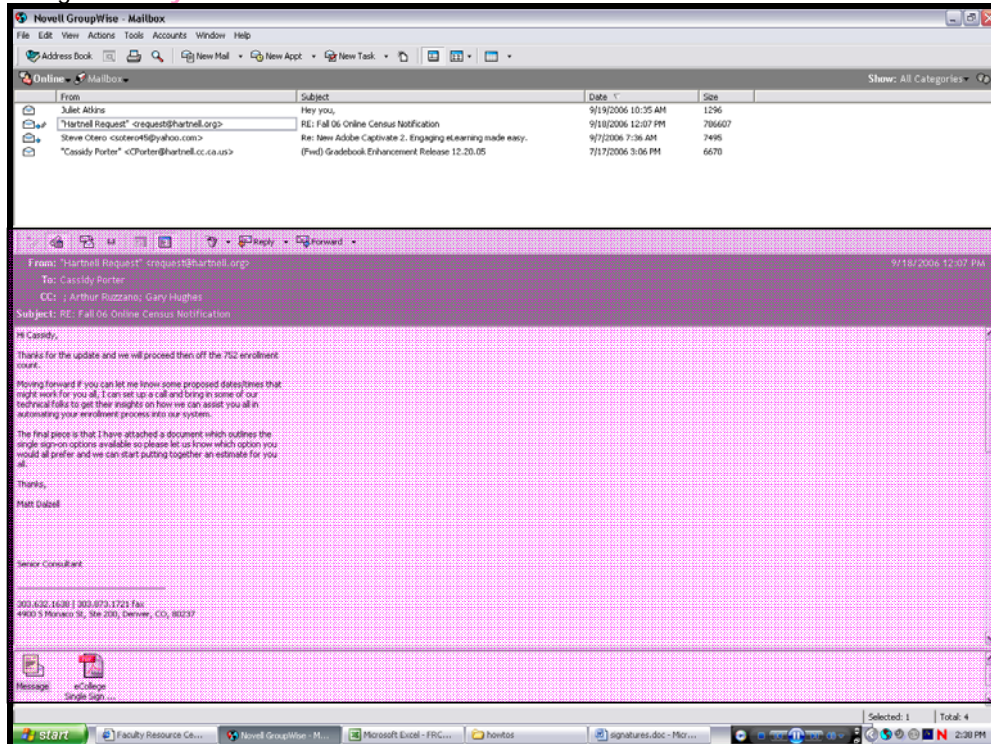
How to Change your QuickViewer

Option 1: Preview Your Emails

- Using the menu bar, go to "view" and chose "QuickViewer"



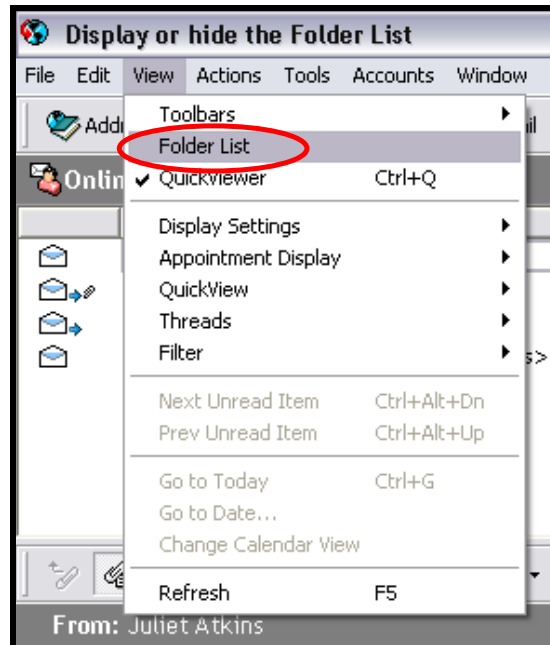
You get this layout:



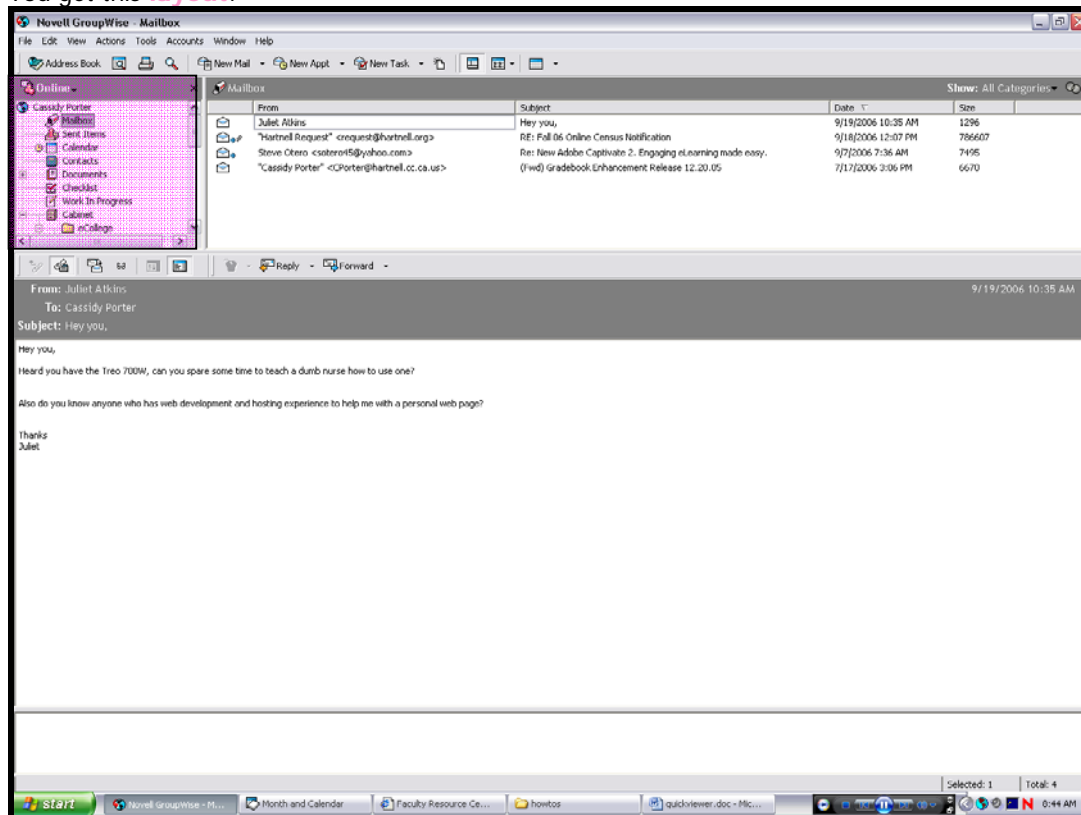
How to Change your QuickViewer

Option 2: Show Your Folder List

- Using the menu bar, go to "view" and chose "Folder List"



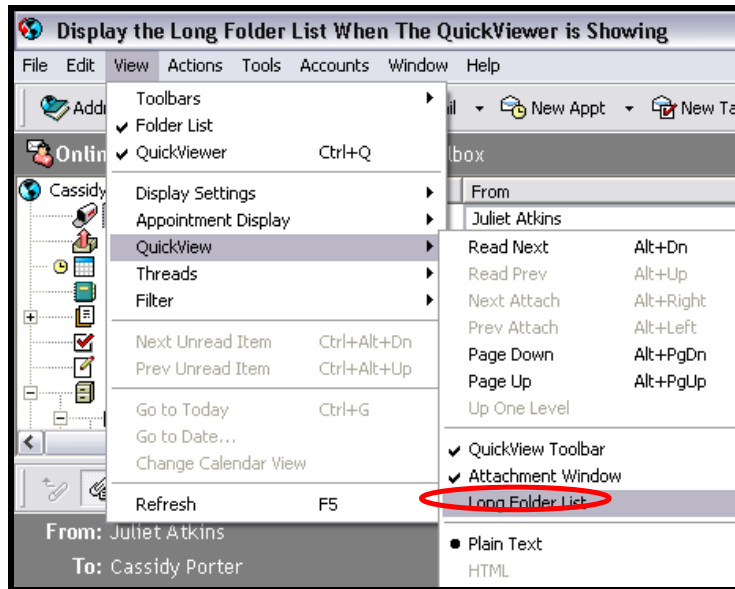
You get this layout:



How to Change your QuickViewer

Option 3: Show Long Folder List

- Using the menu bar, go to "view" chose "Quickview" and chose "Long Folder List"



You get this layout:

