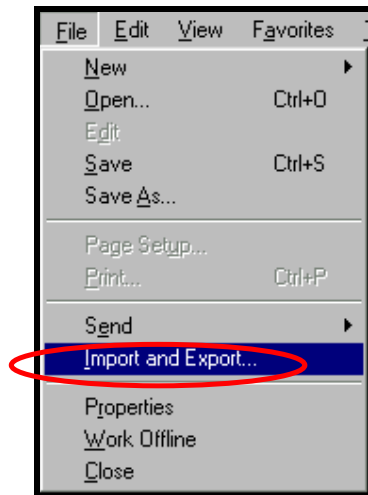


How To...

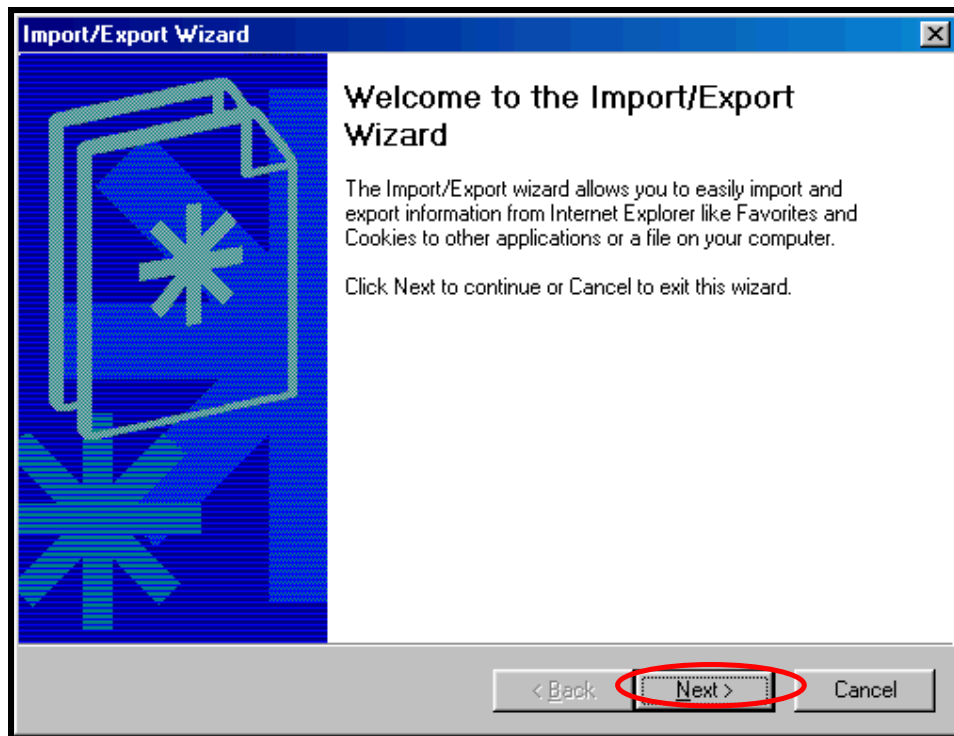
Import Your Favorites

Open Internet Explorer

From the File menu, choose Import and Export.



Click the Next button.

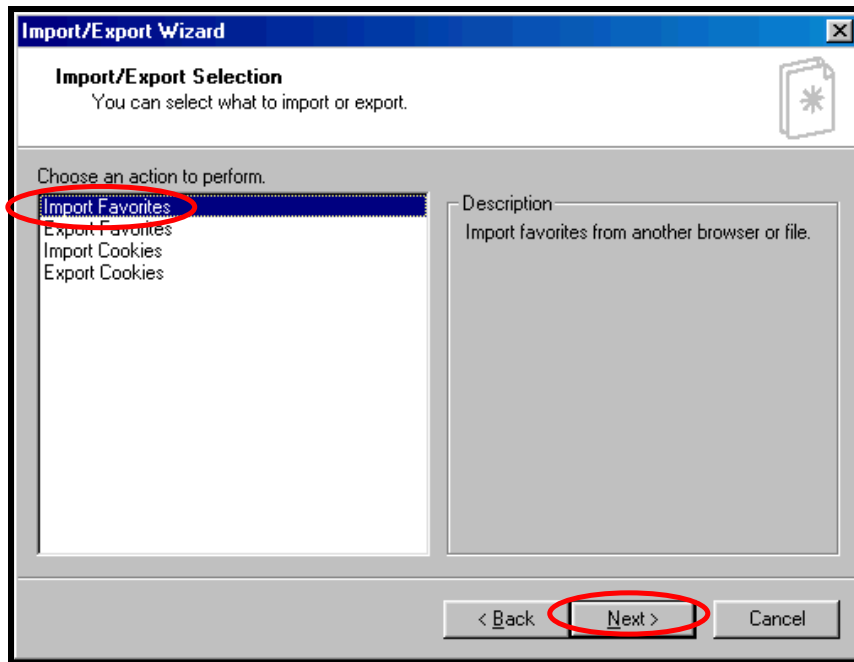


How To...

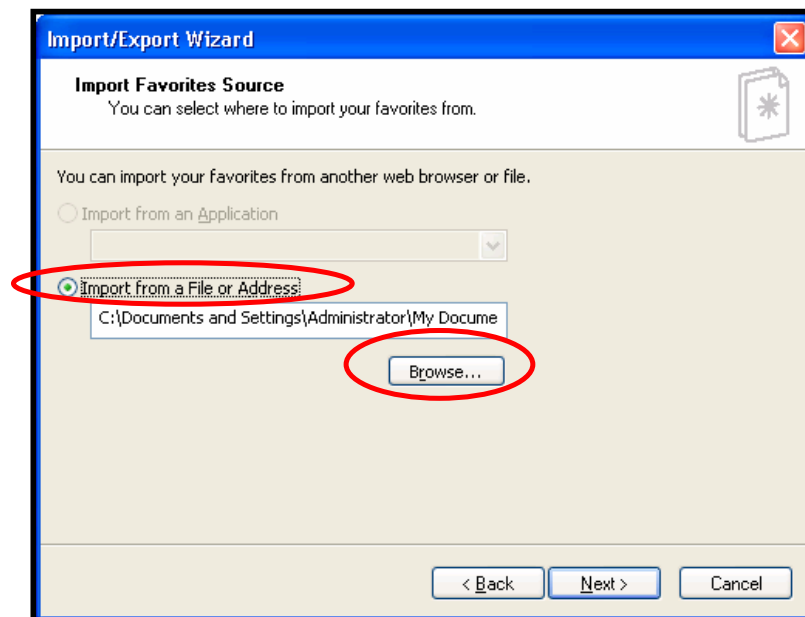
Import Your Favorites

Select Import Favorites in the Choose an action to perform list.

Click the Next button.



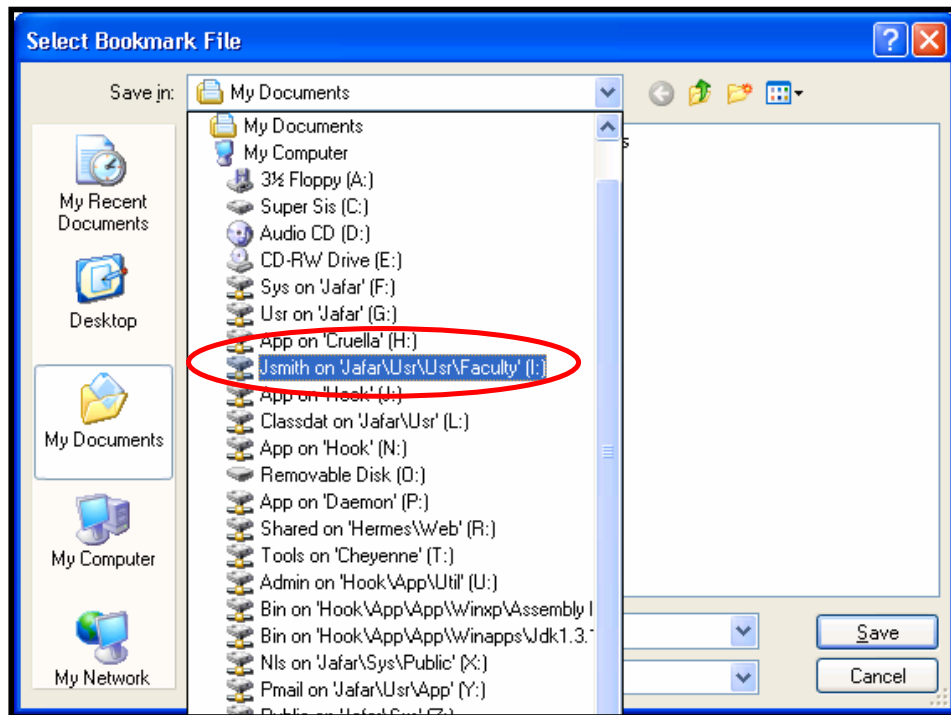
Select Import from File or Address, and chose Browse:



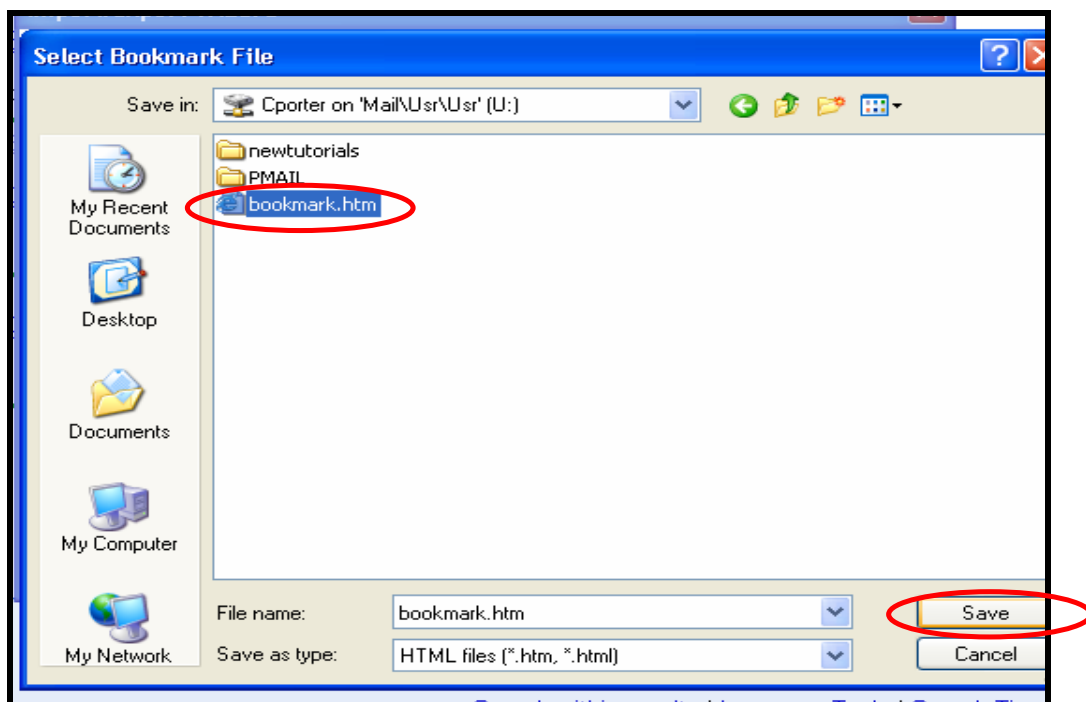
How To...

Import Your Favorites

Chose your network drive: (*Note: for admin it is the “U” drive and for academic it is the “I” drive)



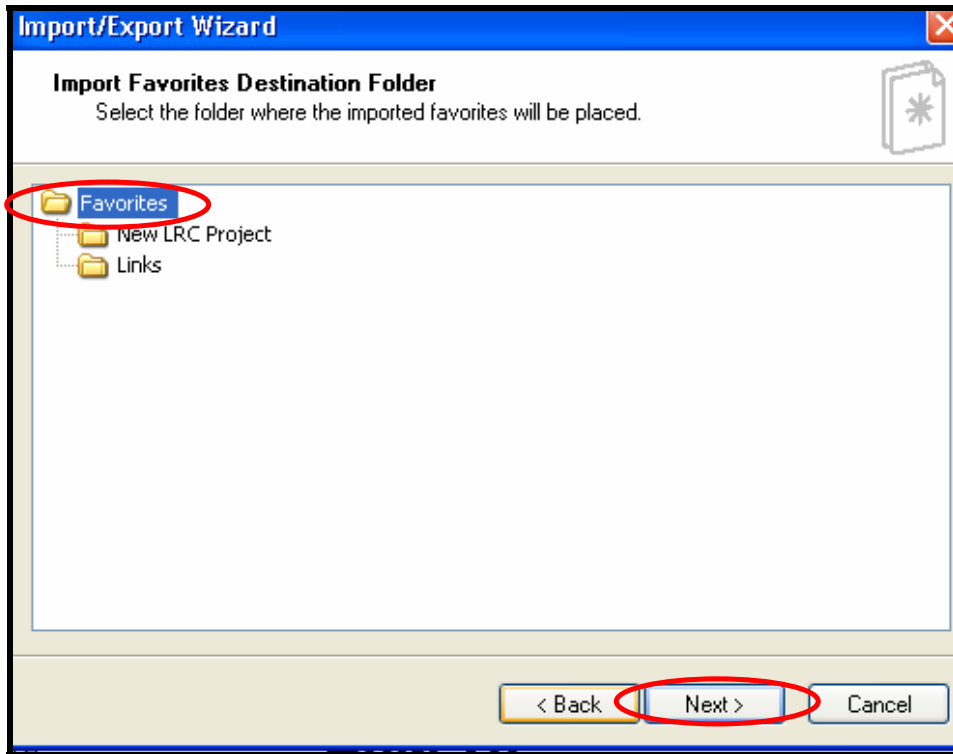
Then select your saved bookmark file, and click save.



How To...

Import Your Favorites

Chose Next and highlight the Favorites folder



Finally chose Next and then Finish.