

---

## VIII. STUDENT CHARACTERISTICS AND PROJECTED ENROLLMENT GROWTH

---

*HIGH SCHOOL GRADUATES:*

Table 8-1 depicts the number of actual and projected graduates from public high schools in the Hartnell College District and California as a whole. In 2013, 3,483 students are projected to graduate from area high schools, which is a 12% increase above 2003 figures. In contrast, the number of high school graduates are expected to increase by 18% across all California high schools during this time.

**Table 8-1**  
**Actual and Projected High School Graduates**  
**for Hartnell College District and California**

Group	Actual Number of Graduates	Projected Number of Graduates				2003 to 2013 Change	
	2003	2004	2005	2010	2013		
Hartnell District	3,097	3,254	3,278	3,435	3,483	386	12%
California Total	339,045	341,908	349,767	396,431	401,685	62,640	18%

Source: California Department of Finance, Demographic Research Unit.

Table 8-2 shows that approximately 25% of 2002-03 local high school graduates attended Hartnell College in the fall of 2003, which is 3% less than those in the 2001-02 graduating class.

**Table  
High School Graduates**

High School Attended	1997 - 98			1998 - 99			1999 - 2000		
	N of Recent HS Grads <sup>1</sup>	Attend Hartnell		N of Recent HS Grads <sup>1</sup>	Attend Hartnell		N of Recent HS Grads <sup>1</sup>	Attend Hartnell	
		N	%		N	%		N	%
Alisal	297	112	38%	296	107	36%	279	-- <sup>2</sup>	N/A
Candy Butler <sup>3</sup>	14	0	0%	4	0	0%	8	-- <sup>2</sup>	N/A
Central Bay Cont.	10	0	0%	11	0	0%	6	-- <sup>2</sup>	N/A
Chalone	N/A	N/A	N/A	21	-- <sup>2</sup>	N/A	30	-- <sup>2</sup>	N/A
El Camino Cont.	11	4	36%	19	6	32%	10	-- <sup>2</sup>	N/A
Everett Alvarez	183	60	33%	297	125	42%	232	-- <sup>2</sup>	N/A
Gonzales	237	68	29%	201	71	35%	199	-- <sup>2</sup>	N/A
Greenfield	N/A	N/A	N/A	N/A	N/A	N/A	N/A	-- <sup>2</sup>	N/A
King City	281	62	22%	313	70	22%	304	-- <sup>2</sup>	N/A
Liberty Family Acad.	0	0	0%	0	0	0%	12	-- <sup>2</sup>	N/A
Mo. Co. Office of Edu.	5	--2	N/A	7	--2	N/A	11	-- <sup>2</sup>	N/A
Mt. Toro Cont.	37	9	24%	38	16	42%	32	-- <sup>2</sup>	N/A
N. Monterey Co.	296	86	29%	291	78	27%	461	-- <sup>2</sup>	N/A
N. Monterey Co. Alt.	54	0	0%	75	0	0%	87	-- <sup>2</sup>	N/A
North Salinas	416	141	34%	335	144	43%	313	-- <sup>2</sup>	N/A
Notre Dame	97	26	27%	93	31	33%	96	-- <sup>2</sup>	N/A
Palma	85	19	22%	97	18	19%	95	-- <sup>2</sup>	N/A
Pinnacles Cont.	6	2	33%	14	11	79%	11	-- <sup>2</sup>	N/A
Salinas	377	158	42%	370	142	38%	374	-- <sup>2</sup>	N/A
Salinas Adult School	59	32	54%	56	19	34%	68	-- <sup>2</sup>	N/A
Soledad	N/A	N/A	N/A	N/A	N/A	N/A	N/A	-- <sup>2</sup>	N/A
Ventana Cont.	0	0	0%	0	0	0%	10	-- <sup>2</sup>	N/A
<b>Total</b>	2,465	779	32%	2,538	838	33%	2,638	-- <sup>2</sup>	N/A

Source: CBEDS, 1996-2003. Notre Dame and Palma Registrars, 1996-2003.  
Hartnell full term data, Fall 1997-2003.

8-2

Attending Hartnell College

2000-01			2001-02			2002-03			2001-02 to 2002-03 Change			
N of Recent HS Grads <sup>1</sup>	Attend Hartnell		N of Recent HS Grads <sup>1</sup>	Attend Hartnell		N of Recent HS Grads <sup>1</sup>	Attend Hartnell		Recent Grads		Attend Hartnell	
	N	%		N	%		N	%	N	%	N	%
364	-- <sup>2</sup>	N/A	341	107	31%	367	108	29%	26	8%	1	1%
8	-- <sup>2</sup>	N/A	2	0	0%	14	0	0%	12	600%	0	0%
7	-- <sup>2</sup>	N/A	15	0	0%	19	0	0%	4	27%	0	0%
5	-- <sup>2</sup>	N/A	2	0	0%	4	0	0%	2	100%	0	0%
6	-- <sup>2</sup>	N/A	13	1	8%	0	0	0%	-13	-100%	-1	-100%
295	-- <sup>2</sup>	N/A	326	122	37%	350	136	39%	24	7%	14	11%
129	-- <sup>2</sup>	N/A	147	55	37%	134	36	27%	-13	-9%	-19	-35%
124	-- <sup>2</sup>	N/A	162	39	24%	183	47	26%	21	13%	8	21%
186	-- <sup>2</sup>	N/A	166	53	32%	186	38	20%	20	12%	-15	-28%
13	-- <sup>2</sup>	N/A	16	0	0%	30	0	0%	14	88%	0	0%
18	-- <sup>2</sup>	N/A	1	0	0%	43	0	0%	42	4200%	0	0%
23	-- <sup>2</sup>	N/A	27	6	22%	39	8	21%	12	44%	2	33%
297	-- <sup>2</sup>	N/A	274	64	23%	276	46	17%	2	1%	-18	-28%
92	-- <sup>2</sup>	N/A	88	0	0%	87	0	0%	-1	-1%	0	0%
312	-- <sup>2</sup>	N/A	333	134	40%	367	133	36%	34	10%	-1	-1%
84	-- <sup>2</sup>	N/A	109	11	10%	83	11	13%	-26	-24%	0	0%
110	-- <sup>2</sup>	N/A	125	14	11%	103	8	8%	-22	-18%	-6	-43%
6	-- <sup>2</sup>	N/A	8	3	38%	3	2	67%	-5	-63%	-1	-33%
393	-- <sup>2</sup>	N/A	416	143	34%	512	176	34%	96	23%	33	23%
46	-- <sup>2</sup>	N/A	76	4	5%	177	1	1%	101	133%	-3	-75%
116	-- <sup>2</sup>	N/A	140	27	19%	109	33	30%	-31	-22%	6	22%
9	-- <sup>2</sup>	N/A	10	0	0%	11	0	0%	1	10%	0	0%
2,643	-- <sup>2</sup>	N/A	2,797	783	28%	3,097	783	25%	300	11%	0	0%

<sup>1</sup> Only includes graduates receiving high school diplomas.

<sup>2</sup> Data not available due to Datatel transitioning.

<sup>3</sup> Candy Butler High School formerly known as Los Padres Continuation High School.

*STUDENT ENROLLMENT PROJECTIONS:*

In Table 8-3, the actual and projected number of students who will enroll at Hartnell College is designated by area of residence. Between 2003 and 2020, Hartnell’s enrollment is predicted to grow by 2,678 students, a 19% increase. The largest proportion of new students will come from South County, with Gonzales (49% increase) and Soledad (49% increase) leading the way. The lowest rate of increase will be in Central County (17%).

**Table 8-3—Hartnell College Actual and Projected Number of Students in Fall Semesters<sup>1</sup>**

Area/City	Actual Number of Students		Estimated Number of Students		Projected Number of Students <sup>1</sup>						2003 to 2020 Change	
	2003		2004		2010		2015		2020		Change	
	N	%	N	%	N	%	N	%	N	%	N	%
<b>North</b>												
Castroville	246	3%	254	3%	254	3%	276	3%	298	3%	52	18%
Moss Landing	12	<1%	13	<1%	13	<1%	14	<1%	15	<1%	3	19%
Prunedale <sup>2</sup>	701	8%	848	10%	846	8%	920	8%	995	8%	294	30%
<b>North Subtotal</b>	959	11%	1,114	13%	1,112	11%	1,210	11%	1,308	11%	349	27%
<b>Central</b>												
Salinas	6,180	69%	6,126	69%	6,647	66%	7,035	65%	7,424	63%	1,244	17%
Spreckels	35	<1%	35	<1%	35	<1%	38	<1%	41	<1%	6	14%
<b>Central Subtotal</b>	6,215	69%	6,161	69%	6,682	66%	7,073	65%	7,465	64%	1,250	17%
<b>South</b>												
Bradley	1	<1%	1	<1%	1	<1%	1	<1%	1	<1%	0	19%
Chualar	71	1%	74	1%	74	1%	80	1%	87	1%	16	18%
Gonzales	344	4%	338	4%	500	5%	587	5%	674	6%	330	49%
Greenfield	462	5%	349	4%	494	5%	573	5%	651	6%	189	29%
King City	404	5%	364	4%	490	5%	552	5%	613	5%	209	34%
San Ardo	10	<1%	6	<1%	6	<1%	7	<1%	7	<1%	-3	-35%
San Lucas	16	<1%	8	<1%	8	<1%	9	<1%	10	<1%	-6	-62%
Soledad	476	5%	492	6%	694	7%	812	7%	930	8%	454	49%
<b>South Subtotal</b>	1,784	20%	1,633	18%	2,268	23%	2,621	24%	2,973	25%	1,189	40%
<b>Outside Hartnell District</b>	2,452	---	1,928	---	2,110	---	2,230	---	2,342	---	-111	-5%
<b>Total</b>	11,410	100%	10,836	100%	12,172	100%	13,134	100%	14,088	100%	2,678	19%

Note: Percentages may not sum to 100% due to rounding.

<sup>1</sup> City of residence based on zip code.

<sup>2</sup> Zip code includes part of north Salinas.

<sup>3</sup> Not included in percentage calculation.

Source: California Community Colleges Management Information Systems (MIS) Student full term data, Fall 1998-2003.

*STUDENT COUNT AND FTES:*

In the fall of 2003, 10,073 credit and non-credit students were enrolled at Hartnell College, a 14% decrease from 2002 (Table 8-4). First period full-time equivalent students (FTES) generally followed the same pattern as student count. FTES decreased by 4% to 7,024 in 2003.

**Table 8-4  
Student Count and Full-Time Equivalent Student (FTES) Enrollment**

Enrollment	1998-99	1999-2000	2000-01	2001-02	2002-03	2003-04	2002-03 to 2003-04 Change	
							N	%
<b>Credit Student Count<sup>1</sup></b>								
Summer	4,244	4,635	4,643	4,782	6,198	4,191	-2,007	-32%
Fall	8,352	9,243	9,213	9,985	11,629	10,070	-1,559	-13%
Spring	10,267	10,311	9,864	12,037	11,825	N/A	N/A	N/A
<b>Non-Credit Student Count<sup>2</sup></b>								
Summer	0	0	26	46	98	0	-98	-100%
Fall	0	175	104	180	84	3	-81	-96%
Spring	175	282	188	96	0	N/A	N/A	N/A
<b>Total Credit and Non-Credit Student Count</b>								
Summer	4,244	4,635	4,669	4,828	6,296	4,191	-2,105	-33%
Fall	8,352	9,418	9,317	10,165	11,713	10,073	-1,640	-14%
Spring	10,442	10,593	10,052	12,133	11,825	N/A	N/A	N/A
<b>Annual Credit and Non-Credit Student Count</b>								
Duplicated <sup>3</sup>	23,038	24,646	24,038	27,126	29,834	N/A	N/A	N/A
Unduplicated	15,523	16,885	15,347	17,389	19,009	N/A	N/A	N/A
<b>Not for Credit Student Count<sup>4</sup></b>	4,013	4,792	4,830	5,283	5,000	7,149	2,149	43%
<b>Total Student Count<sup>5</sup></b>	27,051	29,438	28,868	32,409	34,834	N/A	N/A	N/A
<b>WSCH &amp; FTES</b>								
Fall WSCH <sup>6</sup>	62,818	74,789	N/A	72,619	73,197	65,967	-7,230	-10%
First Period FTES <sup>7</sup>	5,860	6,409	6,280	6,767	7,321	7,024	-297	-4%
Annual FTES <sup>7</sup>	6,244	6,548	6,686	6,922	7,285	7,038	-247	-3%

<sup>1</sup> Credit Student Count = Students taking at least a 0.5 unit or 8 hours of positive attendance for credit.

<sup>2</sup> Non-Credit Student Count = Students taking non-credit courses only, such as Emeritus classes.

<sup>3</sup> Duplicated Student Count = The total number of students enrolled over Summer, Fall, and Spring semesters.

<sup>4</sup> Not for Credit Student Count = Students taking community service classes offered by Workforce and Community Development.

<sup>5</sup> Total Student Count = Duplicated Student Count plus Not for Credit Student Count.

<sup>6</sup> WSCH = Weekly Student Contact Hours are counted for every hour a student has "contact" with an instructor.

<sup>7</sup> FTES = Full-Time Equivalent Student is defined as one student taking 15 units over 17.5 weeks for two semesters.

Source: California Community Colleges Management Information Systems (MIS) Student Full Term Reports: Summer, Fall, Spring 1997-2003.

Workforce and Community Development Recap of Programs, 1997-2003.

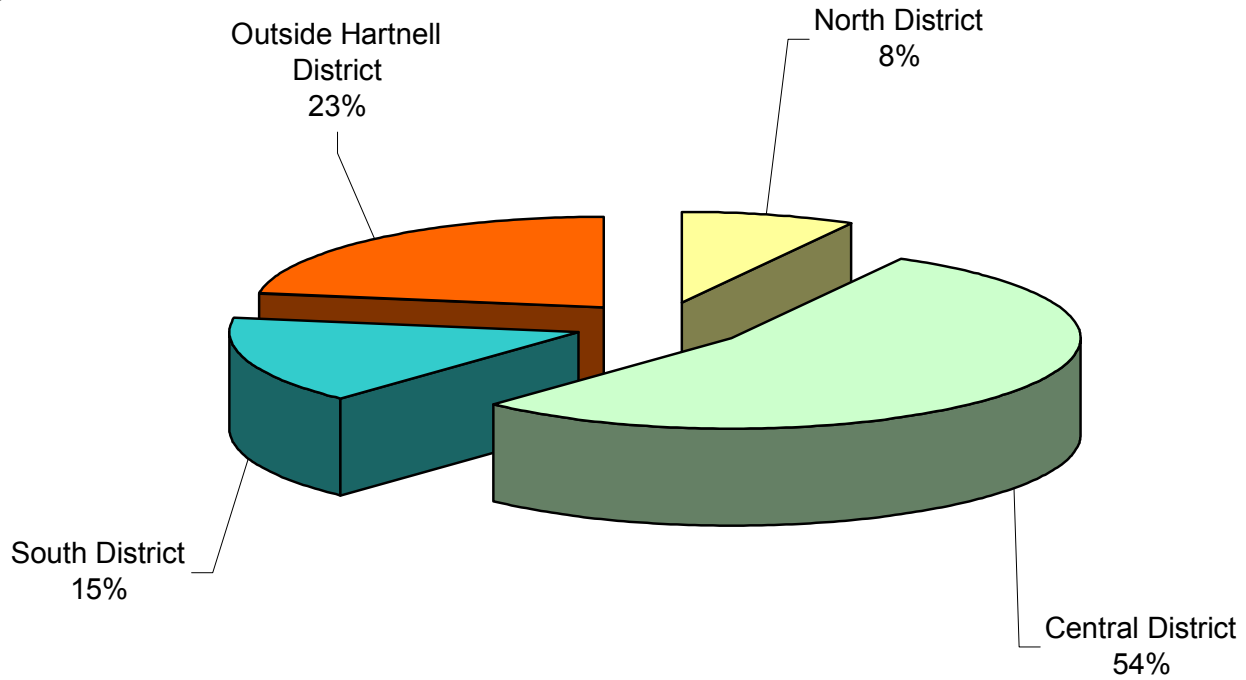
California Community Colleges, Fiscal Data Abstracts, 1997-2003.

Integrated Postsecondary Education Data System (IPEDS) Enrollment Survey, 2001.

*ENROLLMENT BY CITY:*

Enrollment is broken down by geographical area and city of residence in Graph 8-5 and Table 8-5. They show that 54% of Hartnell’s students lived in Salinas and the central portion of the Hartnell College District. Approximately one-sixth of the students resided in the south Salinas Valley and an additional 8% of the student body lived in the northern part of the District. The remainder (23%) live outside the Hartnell District.

**Graph 8-5**  
**Percent of Fall 2003 Enrollment by Area**



**Table 8-5  
Fall Enrollment by City**

Area/City <sup>1</sup>	1998		1999		2000		2001		2002		2003		2002 to 2003 Change	
	N	%	N	%	N	%	N	%	N	%	N	%	N	%
<b>North</b>														
Castroville	201	2%	202	2%	217	2%	269	3%	281	2%	209	2%	-72	-26%
Moss Landing	10	<1%	23	<1%	10	<1%	19	<1%	18	<1%	10	<1%	-8	-44%
Prunedale <sup>2</sup>	719	9%	767	8%	725	8%	795	8%	824	7%	595	6%	-229	-28%
<b>North Subtotal</b>	930	11%	992	11%	952	10%	1,083	11%	1,123	10%	814	8%	-309	-28%
<b>Central</b>														
Salinas	4,835	58%	5,275	56%	5,298	57%	5,685	56%	6,138	52%	5,394	54%	-744	-12%
Spreckels	29	<1%	30	<1%	31	<1%	25	<1%	36	<1%	30	<1%	-6	-17%
<b>Central Subtotal</b>	4,864	58%	5,305	56%	5,329	57%	5,710	56%	6,174	53%	5,424	54%	-750	-12%
<b>South</b>														
Bradley	4	<1%	1	<1%	0	0%	1	<1%	0	0%	1	<1%	1	N/A
Chualar	45	1%	64	1%	65	1%	55	1%	63	1%	67	1%	4	6%
Gonzales	211	3%	235	2%	284	3%	298	3%	326	3%	307	3%	-19	-6%
Greenfield	260	3%	302	3%	304	3%	334	3%	393	3%	408	4%	15	4%
Jolon	2	<1%	1	<1%	1	<1%	0	0%	9	<1%	5	<1%	-4	-44%
King City	273	3%	321	3%	323	3%	319	3%	417	4%	359	4%	-58	-14%
Lockwood	7	<1%	5	<1%	2	<1%	1	<1%	6	<1%	4	<1%	-2	-33%
San Ardo	9	<1%	5	<1%	5	<1%	9	<1%	14	<1%	7	<1%	-7	-50%
San Lucas	6	<1%	5	<1%	8	<1%	8	<1%	11	<1%	15	<1%	4	36%
Soledad	246	3%	315	3%	347	4%	365	4%	440	4%	385	4%	-55	-13%
<b>South Subtotal</b>	1,063	13%	1,254	13%	1,339	14%	1,390	14%	1,679	14%	1,558	15%	-121	-7%
<b>Outside Hartnell District <sup>3</sup></b>	1,495	18%	1,866	20%	1,689	18%	1,972	19%	2,727	23%	2,277	23%	-450	-17%
<b>Not Specified</b>	0	-- <sup>3</sup>	1	-- <sup>3</sup>	8	-- <sup>3</sup>	10	-- <sup>3</sup>	10	-- <sup>3</sup>	0	-- <sup>3</sup>	-10	-100%
<b>Total</b>	8,352	100%	9,417	100%	9,317	100%	10,165	100%	11,713	100%	10,073	100%	-1,640	-14%

Note: Percentages may not sum to 100% due to rounding.

<sup>1</sup> City of residence based on zip code.

<sup>2</sup> Zip code includes part of north Salinas.

<sup>3</sup> Not included in percentage calculation.

Source: California Community Colleges Management Information Systems (MIS) Student full term data, Fall 1998-2003.

*ENROLLMENT BY CLASS LOCATION:*

Table 8-6 shows duplicated enrollment by location for fall semesters, 1997-2002. In fall, 2002, the majority (81%) of student enrollments were at Hartnell's main campus. King City, other Salinas sites, and sites outside the Hartnell District contributed most of the remaining enrollments. The total number of enrollments for all sites decreased by 10% between 2001 and 2002.

**Table 8-6  
Fall Duplicated Enrollment by Location**

Location	1997		1998		1999		2000 <sup>2</sup>		2001 <sup>2</sup>		2002 <sup>2</sup>		2001 to 2002 Change	
	N <sup>1</sup>	%	N <sup>1</sup>	%	N <sup>1</sup>	%	N <sup>1</sup>	%	N <sup>1</sup>	%	N <sup>1</sup>	%	N <sup>1</sup>	%
Castroville	0	0%	2	<1%	38	<1%	48	<1%	57	<1%	58	<1%	1	2%
Gonzales	0	0%	0	0%	24	<1%	0	0%	0	0%	0	0%	0	0%
Greenfield	89	<1%	29	<1%	108	<1%	128	1%	105	<1%	51	<1%	-54	-51%
King City	274	1%	375	2%	411	2%								
City Center	-- <sup>4</sup>	N/A	-- <sup>4</sup>	N/A	-- <sup>4</sup>	N/A	-- <sup>4</sup>	N/A	-- <sup>4</sup>	N/A	720	3%	720	N/A
Gleason Center	-- <sup>3</sup>	N/A	-- <sup>3</sup>	N/A	-- <sup>3</sup>	N/A	216	1%	103	<1%	0	0%	-103	-100%
High School	-- <sup>3</sup>	N/A	-- <sup>3</sup>	N/A	-- <sup>3</sup>	N/A	226	1%	299	1%	0	0%	-299	-100%
Other	-- <sup>3</sup>	N/A	-- <sup>3</sup>	N/A	-- <sup>3</sup>	N/A	19	<1%	153	1%	106	<1%	-47	-31%
No.Mo.Co. High School	-- <sup>4</sup>	N/A	-- <sup>4</sup>	N/A	-- <sup>4</sup>	N/A	146	1%	117	<1%	184	<1%	67	57%
Off Campus In District	0	0%	0	0%	0	0%	98	<1%	0	0%	30	<1%	30	N/A
Out of District	343	2%	604	3%	850	4%	754	3%	1,391	5%	1,991	9%	600	43%
Salinas														
East Campus	204	1%	168	1%	464	2%	371	1%	545	2%	466	2%	-79	-14%
Main Campus	20,725	94%	20,435	94%	21,933	92%	23,018	91%	22,674	87%	18,912	81%	-3,762	-17%
Natividad Med. Center	-- <sup>4</sup>	N/A	-- <sup>4</sup>	N/A	-- <sup>4</sup>	N/A	15	<1%	382	1%	577	2%	195	51%
Other Salinas Sites	316	1%	165	1%	45	<1%	80	<1%	104	<1%	114	<1%	10	10%
Soledad														
Correctional Train. Fac.	67	<1%	58	<1%	62	<1%	0	0%	43	<1%	52	<1%	9	21%
High School	0	0%	1	<1%	0	0%	61	<1%	38	<1%	46	<1%	8	21%
<b>Total</b>	22,018	100%	21,837	100%	23,935	100%	25,180	100%	26,011	100%	23,307	100%	-2,704	-10%

Note: Percentages may not sum to 100% due to rounding.

<sup>1</sup> Duplicated enrollment counts each course taken at each location. Thus, a student enrolled in three courses is counted three times.

<sup>2</sup> 2000-02 are from a different data source and should not be compared to previous years.

<sup>3</sup> Courses previously combined into King City category.

<sup>4</sup> Courses not offered at this location.

Source: Hartnell Report NSR726R1, First Census Data, Fall 1997-99

California Community Colleges Management Information Systems (MIS) Student full term data, Fall 2000-02.

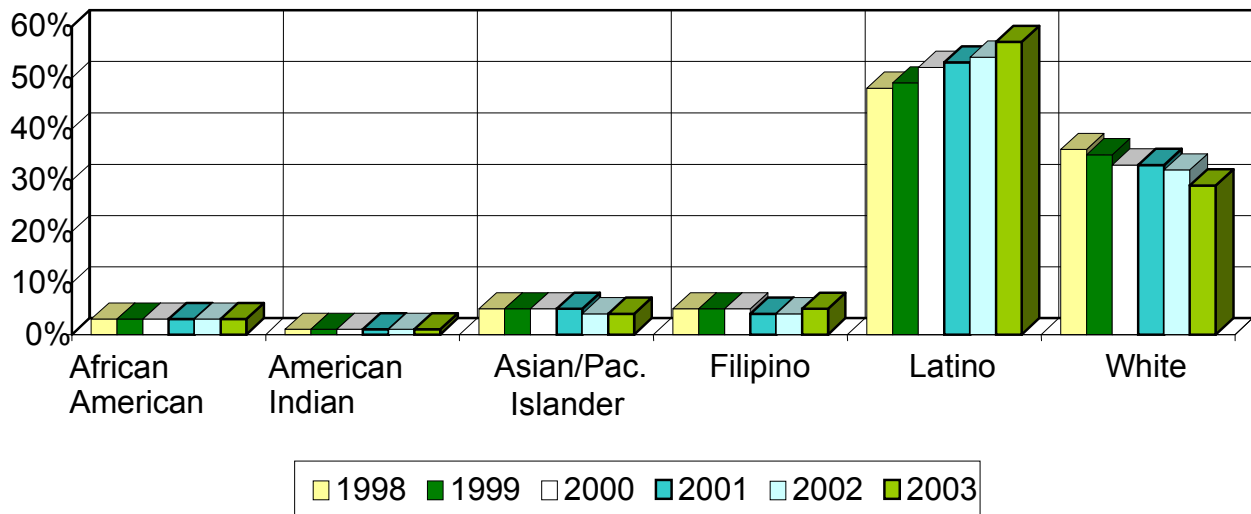
*ENROLLMENT BY ETHNICITY:*

In Graph 8-7 and Table 8-7, fall semester student enrollment is broken down by ethnicity. They show that 57% of Hartnell College students were Latino in fall 2003, followed by Whites (29%), Filipinos (5%), Asian/Pacific Islanders (4%), African Americans (3%), American Indians (1%), and other minorities (1%).

Between 1998 and 2003, the proportion of African Americans, American Indians, Asian/Pacific Islanders, and Filipinos remained relatively constant. However, significant increases were seen among the percentage of Latino students (48% to 57%). Conversely, the proportion of White students (36% to 29%) decreased. As a result of these changes in the ethnic distribution of students, ethnic student enrollment increased from 64% to 71% of the student body.

One reason for the change in the ethnic profile of the College is that the proportion of ethnic minorities in the Hartnell District population has increased in recent years.

**Graph 8-7**  
**Percent of Fall Enrollment by Ethnicity**



**Table 8-7  
Fall Enrollment by Ethnicity**

Ethnicity	1998		1999		2000		2001		2002		2003		2002 to 2003 Change	
	N	%	N	%	N	%	N	%	N	%	N	%	N	%
African American	278	3%	293	3%	265	3%	312	3%	358	3%	286	3%	-72	-20%
American Indian	82	1%	85	1%	86	1%	93	1%	88	1%	79	1%	-9	-10%
Asian/Pac. Islander														
Cambodian	1	<1%	3	<1%	2	<1%	3	<1%	3	<1%	1	<1%	-2	-67%
Chinese	82	1%	93	1%	85	1%	90	1%	102	1%	71	1%	-31	-30%
East Indian	11	<1%	17	<1%	19	<1%	20	<1%	23	<1%	23	<1%	0	0%
Japanese	132	2%	139	1%	140	2%	141	1%	117	1%	95	1%	-22	-19%
Korean	51	1%	55	1%	49	1%	63	1%	63	1%	45	<1%	-18	-29%
Laotian	8	<1%	13	<1%	10	<1%	20	<1%	19	<1%	8	<1%	-11	-58%
Vietnamese	37	<1%	34	<1%	31	<1%	43	<1%	42	<1%	45	<1%	3	7%
Other Asian	23	<1%	28	<1%	31	<1%	31	<1%	23	<1%	26	<1%	3	13%
Guamanian	6	<1%	10	<1%	11	<1%	16	<1%	13	<1%	12	<1%	-1	-8%
Hawaiian	24	<1%	22	<1%	16	<1%	25	<1%	28	<1%	22	<1%	-6	-21%
Samoan	12	<1%	12	<1%	8	<1%	10	<1%	12	<1%	6	<1%	-6	-50%
Other Pac. Islander	24	<1%	16	<1%	19	<1%	17	<1%	21	<1%	13	<1%	-8	-38%
<b>Total Asian/Pac. Is.</b>	411	5%	442	5%	421	5%	479	5%	466	4%	367	4%	-99	-21%
Filipino	399	5%	456	5%	417	5%	400	4%	467	4%	448	5%	-19	-4%
Latino														
Mexican	3,442	42%	3,960	43%	3,984	45%	4,237	44%	4,822	45%	4,389	48%	-433	-9%
Central American	61	1%	65	1%	56	1%	100	1%	163	2%	133	1%	-30	-18%
South American	53	1%	59	1%	86	1%	152	2%	221	2%	188	2%	-33	-15%
Other Latino	418	5%	476	5%	530	6%	534	6%	577	5%	524	6%	-53	-9%
<b>Total Latino</b>	3,974	48%	4,560	49%	4,656	52%	5,023	53%	5,783	54%	5,234	57%	-549	-9%
White	2,994	36%	3,301	35%	2,942	33%	3,105	33%	3,496	32%	2,679	29%	-817	-23%
Other Minorities	148	2%	180	2%	130	1%	117	1%	123	1%	89	1%	-34	-28%
Not Reported	66	-- <sup>1</sup>	101	-- <sup>1</sup>	400	-- <sup>1</sup>	636	-- <sup>1</sup>	934	-- <sup>1</sup>	892	-- <sup>1</sup>	-42	-4%
<b>Total</b>	8,352	100%	9,418	100%	9,317	100%	10,165	100%	11,715	100%	10,074	100%	-1,641	-14%
<b>Total Minority</b>	5,292	64%	6,016	65%	5,975	67%	6,424	67%	7,285	68%	6,503	71%	-782	-11%

Note: Percentages may not sum to 100% due to rounding.

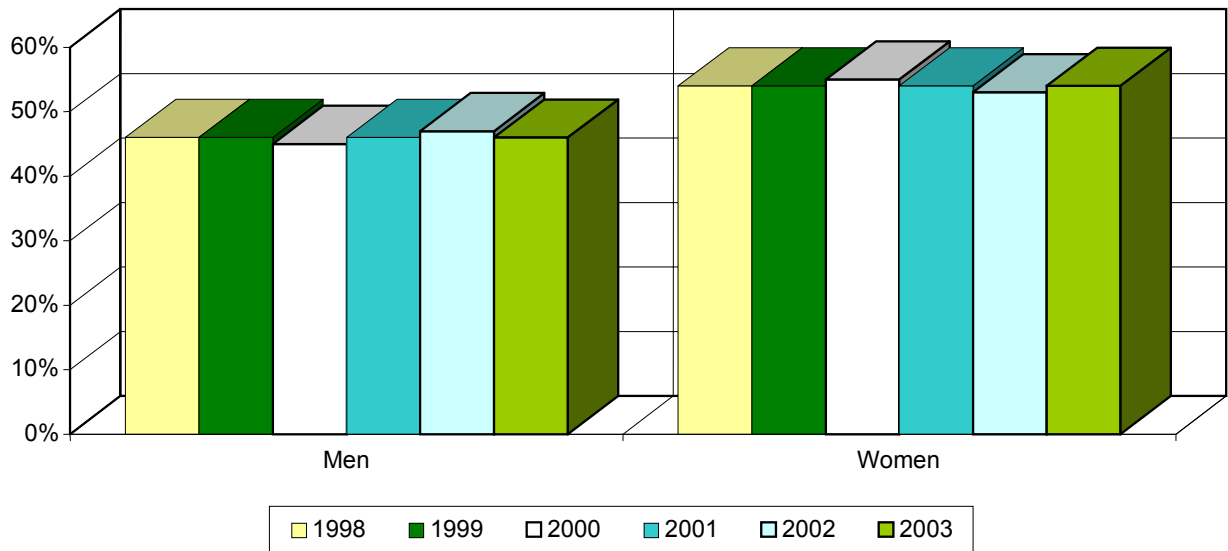
<sup>1</sup> Not included in percentage calculation.

Source: California Community Colleges Management Information Systems (MIS) Student Full Term Reports, Fall 1998-2003.

*ENROLLMENT BY GENDER:*

In the fall of 2003, 54% of Hartnell’s students were women and 46% were men, as shown in Graph 8-8 and Table 8-8. Between 1998 and 2003, the proportion of men and women have remained relatively constant.

**Graph 8-8  
Fall Enrollment by Gender**



**Table 8-8  
Fall Enrollment by Gender**

Gender	1998		1999		2000		2001		2002		2003		2002 to 2003 Change	
	N	%	N	%	N	%	N	%	N	%	N	%	N	%
Men	3,815	46%	4,297	46%	4,093	45%	4,578	46%	5,496	47%	4,604	46%	-892	-16%
Women	4,492	54%	5,071	54%	5,035	55%	5,334	54%	6,205	53%	5,447	54%	-758	-12%
Not Specified	45	-- <sup>1</sup>	50	-- <sup>1</sup>	189	-- <sup>1</sup>	253	-- <sup>1</sup>	14	-- <sup>1</sup>	23	-- <sup>1</sup>	9	64%
<b>Total</b>	<b>8,352</b>	<b>100%</b>	<b>9,418</b>	<b>100%</b>	<b>9,317</b>	<b>100%</b>	<b>10,165</b>	<b>100%</b>	<b>11,715</b>	<b>100%</b>	<b>10,074</b>	<b>100%</b>	<b>-1,641</b>	<b>-14%</b>

Note: Percentages may not sum to 100% due to rounding.

<sup>1</sup>Not included in percentage calculation.

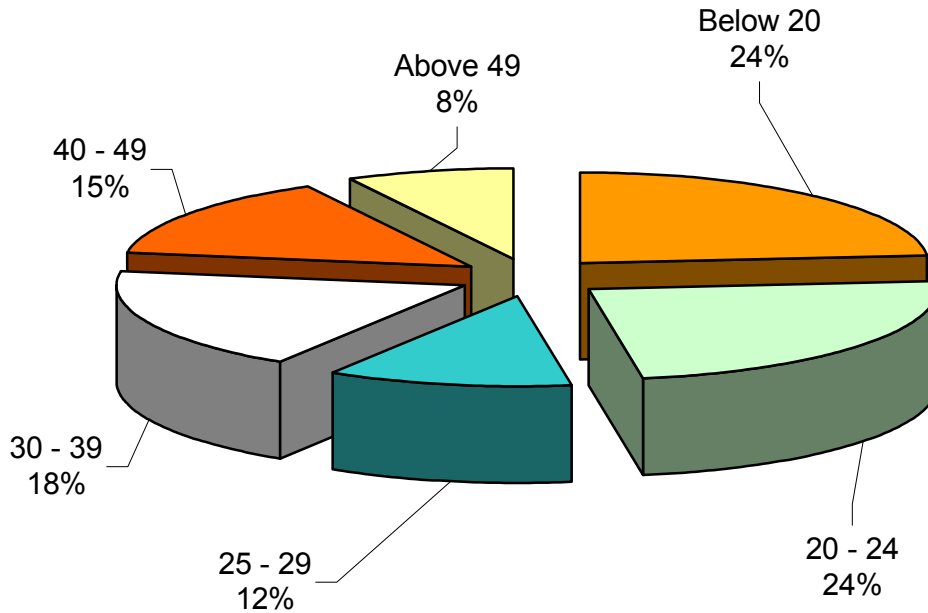
Source: California Community Colleges Management Information Systems (MIS) Student Full Term Reports, Fall 1998-2003.

*ENROLLMENT BY AGE:*

Graph 8-9 (below) and Table 8-9 display the distribution of Hartnell students by age. They show that in fall 2003, approximately one-fourth of the students were less than 20 years old, approximately one-fourth were between ages 20 and 24, almost 45% were 25 to 49, and 8% were 50 or older.

This graph and table also show that since 1998 the distribution of students was growing somewhat older. Between 1998 and 2003, the proportion of students younger than 20 declined steadily from 28% to 24% of the student body. Similarly, students older than 39 increased from 19% to 23%. The increase in older students may be the result of larger enrollments in the administration of justice courses offered outside the Hartnell College district through the Joint Powers agreement.

**Graph 8-9**  
**Percentages of Fall 2003 Enrollment by Age**



**Table 8-9  
Fall Enrollment by Age**

Age	1998		1999		2000		2001		2002		2003		2002 to 2003 Change	
	N	%	N	%	N	%	N	%	N	%	N	%	N	%
Below 20	2,310	28%	2,427	26%	2,352	25%	2,459	24%	2,863	24%	2,377	24%	-486	-17%
20 - 24	1,878	22%	2,166	23%	2,200	24%	2,374	23%	2,594	22%	2,403	24%	-191	-7%
25 - 29	1,084	13%	1,154	12%	1,086	12%	1,121	11%	1,345	12%	1,159	12%	-186	-14%
30 - 39	1,551	19%	1,744	19%	1,634	18%	1,848	18%	2,181	19%	1,861	18%	-320	-15%
40 - 49	967	12%	1,097	12%	1,158	12%	1,400	14%	1,669	14%	1,481	15%	-188	-11%
Above 49	562	7%	830	9%	865	9%	945	9%	1,041	9%	781	8%	-260	-25%
Not Specified	0	*	0	*	22	*	18	*	22	*	12	*	-10	-45%
<b>Total</b>	<b>8,352</b>	<b>100%</b>	<b>9,418</b>	<b>100%</b>	<b>9,295</b>	<b>100%</b>	<b>10,165</b>	<b>100%</b>	<b>11,715</b>	<b>100%</b>	<b>10,074</b>	<b>100%</b>	<b>-1,641</b>	<b>-14%</b>

Note: Percentages may not sum to 100% due to rounding.

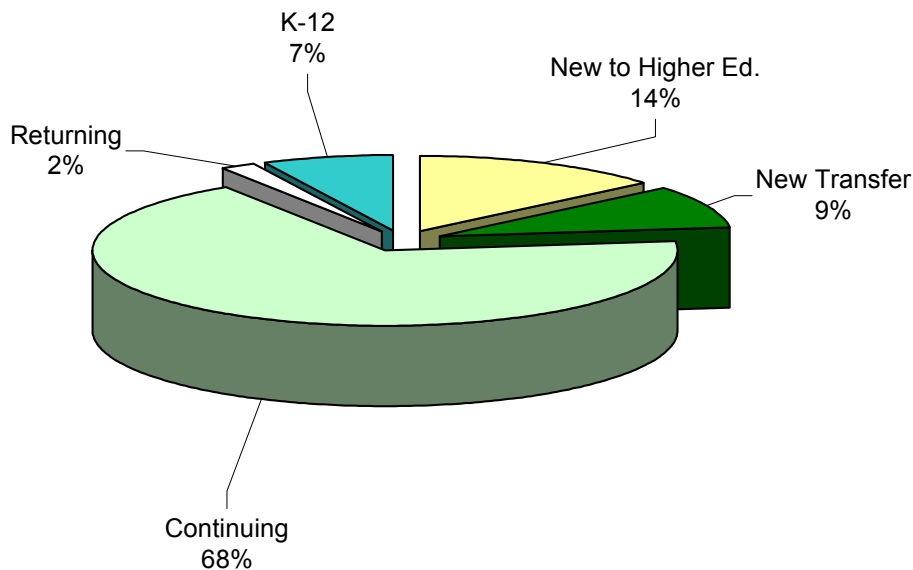
\*Not included in percentage calculation.

Source: California Community Colleges Management Information Systems (MIS) Student Full Term Reports, Fall 1998-2003.

*ENROLLMENT STATUS:*

In fall 2003, approximately two-thirds of Hartnell’s students were continuing from the spring 2002 semester, and 14% were new students to higher education. An additional 9% were new transfer students from other higher education institutions and 7% were K-12 students. Compared to 1998, the proportions of continuing students and new transfer students increased, while the percentage of students new to higher education and returning students decreased.

**Graph 8-10  
Percentages of Fall 2003 Enrollment by Enrollment Status**



**Table 8-10 – Fall Enrollment by Enrollment Status**

Enrollment Status	1998		1999		2000		2001		2002		2003		2002 to 2003 Change	
	N	%	N	%	N	%	N	%	N	%	N	%	N	%
New to Higher Ed.	1,859	22%	2,193	23%	-- <sup>1</sup>	N/A	1,886	19%	3,205	28%	1,388	14%	-1,817	-57%
New Transfer	608	7%	971	10%	-- <sup>1</sup>	N/A	965	10%	1,433	12%	905	9%	-528	-37%
Continuing	3,863	47%	4,109	44%	-- <sup>1</sup>	N/A	5,114	52%	6,055	53%	6,791	68%	736	12%
Return. Hartnell <sup>4</sup>	1,235	15%	1,311	14%	-- <sup>1</sup>	N/A	898	9%	-- <sup>3</sup>	N/A	-- <sup>3</sup>	N/A	N/A	N/A
Return. Transfer <sup>4</sup>	120	1%	109	1%	-- <sup>1</sup>	N/A	29	<1%	-- <sup>3</sup>	N/A	-- <sup>3</sup>	N/A	N/A	N/A
Returning <sup>3,4</sup>	N/A	N/A	N/A	N/A	N/A	N/A	N/A	N/A	646	6%	194	2%	-452	-70%
K - 12	621	7%	667	7%	-- <sup>1</sup>	N/A	960	10%	129	1%	722	7%	593	460%
Unknown	46	-- <sup>2</sup>	58	-- <sup>2</sup>	-- <sup>1</sup>	N/A	313	-- <sup>2</sup>	247	-- <sup>2</sup>	74	-- <sup>2</sup>	-173	-70%
<b>Total</b>	<b>8,352</b>	<b>100%</b>	<b>9,418</b>	<b>100%</b>	<b>0</b>	<b>0%</b>	<b>10,165</b>	<b>100%</b>	<b>11,715</b>	<b>100%</b>	<b>10,074</b>	<b>100%</b>	<b>-1,641</b>	<b>-14%</b>

Note: Percentages may not sum to 100% due to rounding

<sup>1</sup>Data not available due to Datatel transitioning

<sup>2</sup>Not included in percentage calculation.

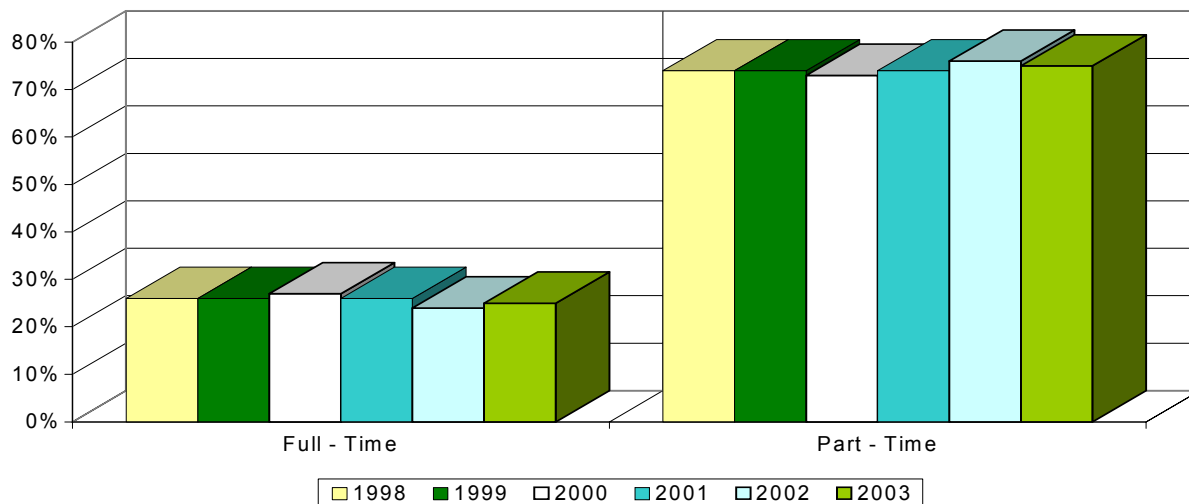
<sup>3</sup>Returning Hartnell students and Returning Transfer students were combined into Returning students category.

Source: California Community Colleges Management Information Systems (MIS) Student Full Term Reports, Fall 1998-2003.

**ENROLLMENT BY FULL-TIME/PART-TIME STATUS:**

Graph 8-11 and Table 8-11 show that 75% of Hartnell’s students attended the college on a part-time basis (fewer than 12 credit hours), while 25% were full-time students (12 or more credit hours) in fall 2003. Between 1998 and 2003, the proportion of full-time students to the portion of part-time students has remained steady.

**Graph 8-11 – Percentages of Fall Enrollment by Full-Time/Part-Time Status**



**Table 8-11**  
**Fall Enrollment by Full-Time/Part-Time Status**

Status	1998		1999		2000		2001		2002		2003		2002 to 2003 Change	
	N	%	N	%	N	%	N	%	N	%	N	%	N	%
Full-Time	2,188	26%	2,480	26%	2,560	27%	2,603	26%	2,802	24%	2,496	25%	-306	-11%
Part-Time	6,164	74%	6,938	74%	6,757	73%	7,562	74%	8,913	76%	7,578	75%	-1,335	-15%
<b>Total</b>	<b>8,352</b>	<b>100%</b>	<b>9,418</b>	<b>100%</b>	<b>9,317</b>	<b>100%</b>	<b>10,165</b>	<b>100%</b>	<b>11,715</b>	<b>100%</b>	<b>10,074</b>	<b>100%</b>	<b>-1,641</b>	<b>-14%</b>

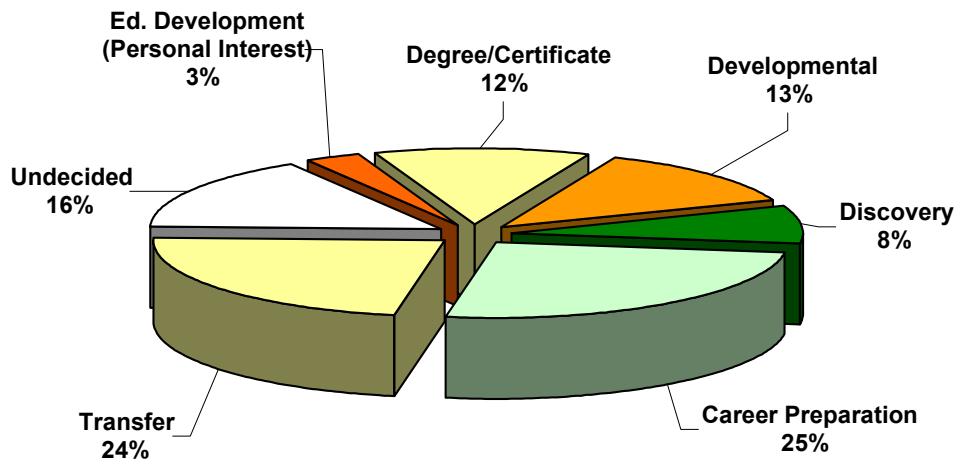
Note: Percentages may not sum to 100% due to rounding.

Source: California Community College Management Information System (MIS) Student Full Term Reports, Fall 1998-2003.

*ENROLLMENT BY EDUCATIONAL GOAL:*

Graph 8-12 and Table 8-12 show the primary educational goals of students when they enrolled at Hartnell College. In fall 2003, approximately one-quarter of the students were preparing for a new career, 24% intended to transfer to a four-year college or university, 16% were undecided about their goals, and 13% were taking developmental education classes. In addition, 12% of the students were seeking a degree or certificate only, 8% were at Hartnell for discovery, and 3% were taking classes for personal interest. The students' educational goals remained relatively stable between 2002 and 2003.

**Graph 8-12**  
**Percentages of Fall 2003 Enrollment by Educational Goal**



**Table 8-12**  
**Fall Enrollment by Educational Goal**

Educational Goal	1998		1999		2000 <sup>1</sup>		2001 <sup>1</sup>		2002 <sup>1</sup>		2003 <sup>1</sup>		2002 to 2003 Change	
	N	%	N	%	N	%	N	%	N	%	N	%	N	%
Transfer w/ AA	2,067	25%	2,202	24%	722	19%	1,400	21%	2,408	21%	1,981	20%	-427	-18%
Transfer w/o AA	360	4%	391	4%	102	3%	218	3%	403	3%	316	3%	-87	-22%
Assoc. Deg. (G.E.)	511	6%	541	6%	249	6%	476	7%	800	7%	661	7%	-139	-17%
Assoc. Deg. (Voc.)	341	4%	348	4%	67	2%	110	2%	295	3%	216	2%	-79	-27%
Voc. Certificate	252	3%	274	3%	95	2%	174	3%	347	3%	281	3%	-66	-19%
Discovery	256	3%	291	3%	176	5%	337	5%	836	7%	754	8%	-82	-10%
Prep. for Career	696	9%	851	9%	478	12%	593	9%	1,034	9%	868	9%	-166	-16%
Maint./Adv. Career	682	8%	972	11%	306	8%	625	9%	1,319	11%	1,438	14%	119	9%
Certificate/License	174	2%	184	2%	63	2%	161	2%	292	3%	287	3%	-5	-2%
Ed. Development	1,103	14%	1,388	15%	170	4%	323	5%	417	4%	324	3%	-93	-22%
Imprv. Basic Skills	171	2%	165	2%	119	3%	264	4%	385	3%	378	4%	-7	-2%
HS Diploma/GED	339	4%	375	4%	215	6%	475	7%	885	8%	930	9%	45	5%
Undecided	1,183	15%	1,267	14%	1,073	28%	1,598	24%	2,167	19%	1,549	16%	-618	-29%
Unknown	217	-- <sup>2</sup>	169	-- <sup>2</sup>	5,482	-- <sup>2</sup>	3,411	-- <sup>2</sup>	125	-- <sup>2</sup>	90	-- <sup>2</sup>	-35	-28%
<b>Total</b>	<b>8,352</b>	<b>100%</b>	<b>9,418</b>	<b>100%</b>	<b>9,317</b>	<b>100%</b>	<b>10,165</b>	<b>100%</b>	<b>11,713</b>	<b>100%</b>	<b>10,073</b>	<b>100%</b>	<b>-1,640</b>	<b>-14%</b>

Note: Percentages may not sum to 100% due to rounding.

<sup>1</sup>Due to Datatel transitioning, the data from 2000-03 should not be compared to 1998-99.

<sup>2</sup>Not included in percentage calculation.

Source: California Community Colleges Management Information Systems (MIS) Student full term data, Fall 1998-2003.

**CONCLUSIONS:**

Student enrollment will continue to reflect the growth of the population at Hartnell. A greater proportion of the student population will be younger, Latino, female, and attend Hartnell part-time. Hartnell will need to effectively adapt to these changing demographics.