

XVI. SITE LOCATIONS AND ANALYSIS

A. ECOLOGY:

Hartnell College District is made up of one main campus, an East Campus in the Alisal District of Salinas, and a site in King City, known as the King City Education Center. The main campus is located in the city of Salinas on 50.1 acres, bordered by Monterey Stone Pines, Cherry Trees, and other mature landscaping that buffers its presence from the surrounding residential areas that have developed around the campus. Over the last twenty-five years, the campus has completed its opportunity to build or “stretch” out because it has reached 98 per cent of its growth potential.

The East Campus is located in the east side of Salinas on 141.7 acres of prime farmland. This campus originally housed the agricultural and vocational disciplines of the District. East Campus is experiencing growth and can readily use four to eight acres for educational delivery. A total of 21 acres can be used for future growth should the need arise. This would allow the District to hold approximately 20 acres for further renovation. One hundred acres can be used as a revenue stream for the District.

The campus in King City consists of a relatively new two story building in the downtown area.

B. GEOLOGY:

The Hartnell College District is located in Seismic Hazard Area IV, which is an area of moderately high seismic hazards. Most of the major college buildings are constructed on piers that extend twenty and thirty feet into the soil, depending upon the soil condition. From the building construction, it would appear that there has been a concern for settlement of the upper strata of soil and potential liquefaction in the event of a major earthquake.

C. TRAFFIC CIRCULATION:

The automobile has and will continue to be the favored mode of transportation to the main campus as well as the other sites. Monterey-Salinas Transit serves the main campus and the East Campus with regularly scheduled bus cycles. South County Transportation provides a carrier from King City, Greenfield, Soledad, and Gonzales to the main campus and returns. Experience demonstrates that a commute time exceeding 25 minutes constitutes a barrier to attendance.

D. ACCESS:

Gaining entrance to the main campus is open from any direction that a person may approach. All can interact with the physical environment as they move freely through the campus. Stimulated by the landscape and finding clear direction about where one is going produces a sense of well being and comfort. This open access ties the architectural environment and circulation together, thus, facilitating pedestrian movement and student access.

East Campus access is relatively easy. Entrance can be gained from entering through a main gate off of

Alisal Street that opens up to all the campus facilities. The existing buildings are spread out which allows for free movement and full appreciation of the agricultural environment. The new admissions, records, financial aid and counseling building are in the forefront of the new “quad” area that grants all users quick entry.

The Gleason Center in King City is centrally located in the heart of the city and allows for easy accessibility. Even though it is a small facility, it is open all around for vehicle and pedestrian access. The pedestrian footprint existing at the campus and sites needs to be preserved as well as articulated.

E. TRANSPORTATION PATH AND ACCOMMODATIONS:

Highway 101 serves the Hartnell College District as the main artery that connects all the sites within the District boundaries. Major surface streets in all locations allow suitable accommodations for campus access. Knowing that extensive travel and time place constraints on attendance, Hartnell is working with the transit agencies to expand service in the outlying areas to meet transportation requirements. Hartnell is looking into partnering with some of the K-12 districts to expand their bus routes to accommodate user transportation needs. Van pools and shuttles are other modes of transportation that are gaining interest within the District.

F. PARKING:

Parking is, and will continue to be, an issue at the main campus as enrollment increases. Currently, the number of existing spaces is inadequate to accommodate present student needs. The majority of documents reflect that the main campus is land-locked and the required acreage for an institution this size is lacking, therefore, there is no opportunity to increase parking. The East Campus can accommodate additional parking with future expansion and proper planning. Perhaps this additional parking could offset some of the parking required at the main campus through the use of intra-campus shuttles or city transit service. Other sites at this point do not reflect parking problems, but with increased enrollment in the near future, these problems will surface without adequate planning.

G. PROGRAM LOCATIONS:

The District offers educational programs, as detailed in the 2000-2004 Five-Year Construction Plan, at the following locations:

Anaheim

NAEYC Conference, Anaheim, CA

Castroville

Apprentice Electrical, 10300 Merrit Street
North Monterey County High School, Castroville Blvd.

Gonzales

Gonzales School District
Fairview Middle School, 401 4th Street, Gonzales

Greenfield

Greenfield High School, 2025 El Camino Real
Vista Verde Middle School, 1199 Elm Street

Jolon

Fort Hunter Liggett

King City

King City Child Development Center, 231 Lynn Street
Dole plant, unknown address at this time
King City Education Center, 117 North Second Street
King City High School, 720 Broadway
King City Recreational Center, 411 Division Street

Monterey

Community Hospital of Monterey Peninsula, 23625 Holman Hwy.
MLT Skills Lab, #2 Harris Road, Suite B3 & B4, Monterey 93940

Salinas

Main Campus, 156 Homestead Ave
East Campus, 1752 East Alisal
Salinas Valley Memorial Hospital, 450 E. Romie Lane
Natividad Medical Center, 1441 Constitution Blvd.
Monterey County Office of Education, 901 Blanco Circle
Children's Services Admin Bldg., 344 Salinas Street
Department of Social Services, 714 LaGuardia
Mountain Valley Family and Child Care Center, 115 Bardin Road

San Jose

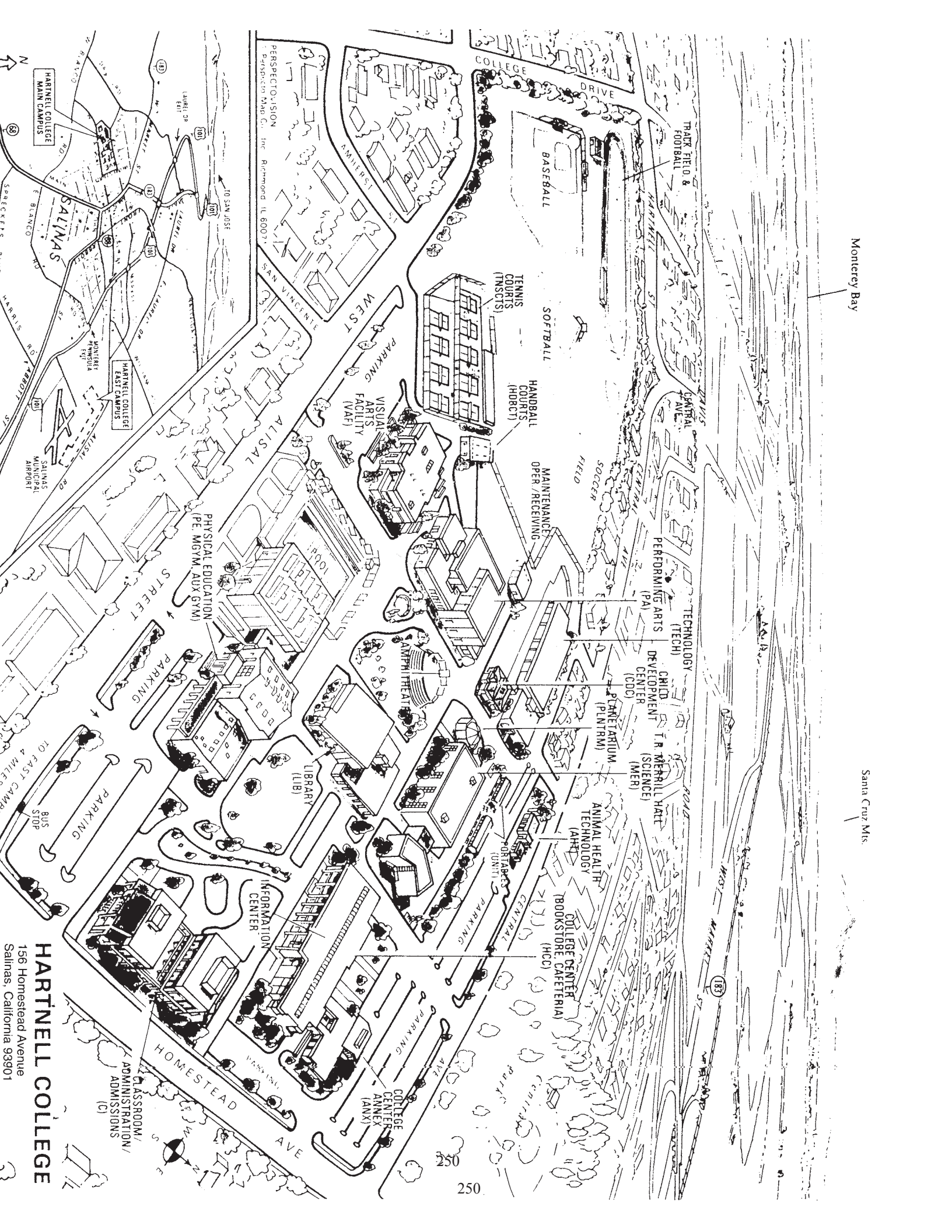
Hayes Mansion Conference Center, 200 Edenvale Ave, San Jose

Soledad

Correctional Training Facility, Soledad, Hwy 101
Soledad High School, 425 Gabilan Drive
Gavilan Migrant Head Start, 1303 Metz Road, Soledad
EOC Child Development Center, 1306 Metz Road, Soledad

Watsonville

Watsonville Community Hospital, 298 Green Valley Road



Monterey Bay

Santa Cruz Mts

HARTNELL COLLEGE

156 Homestead Avenue
Salinas, California 93901

CLASSROOM/
ADMINISTRATION/
ADMISSIONS
(C)

INFORMATION
CENTER

LIBRARY
(LIB)

PHYSICAL EDUCATION
(PE, MGYM, AUX GYM)

VISUAL
ARTS
FACILITY
(VAF)

AMPHI
THEATRE

MAINTENANCE
OPER./RECEIVING

TENNIS
COURTS
(TNSCTS)

HANDBALL
COURTS
(HNSCT)

PERFORMING ARTS
(PA)

TECHNOLOGY
(TECH)

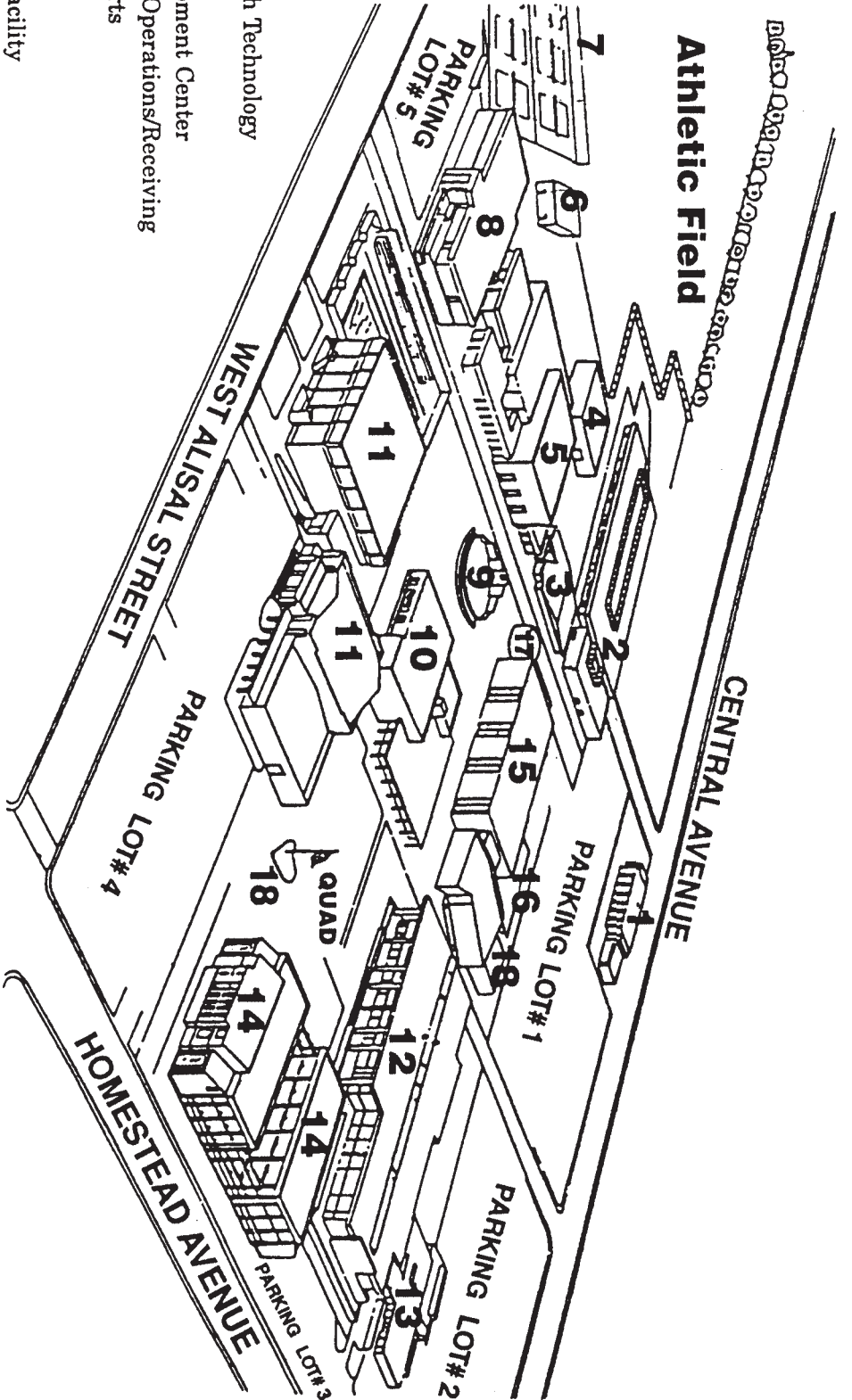
CHILD
DEVELOPMENT
CENTER
(CDC)

MERRILL HALL
(MER)

ANIMAL HEALTH
TECHNOLOGY
(AHT)

COLLEGE CENTER
(BOOKSTORE, CAFETERIA)
(HCC)

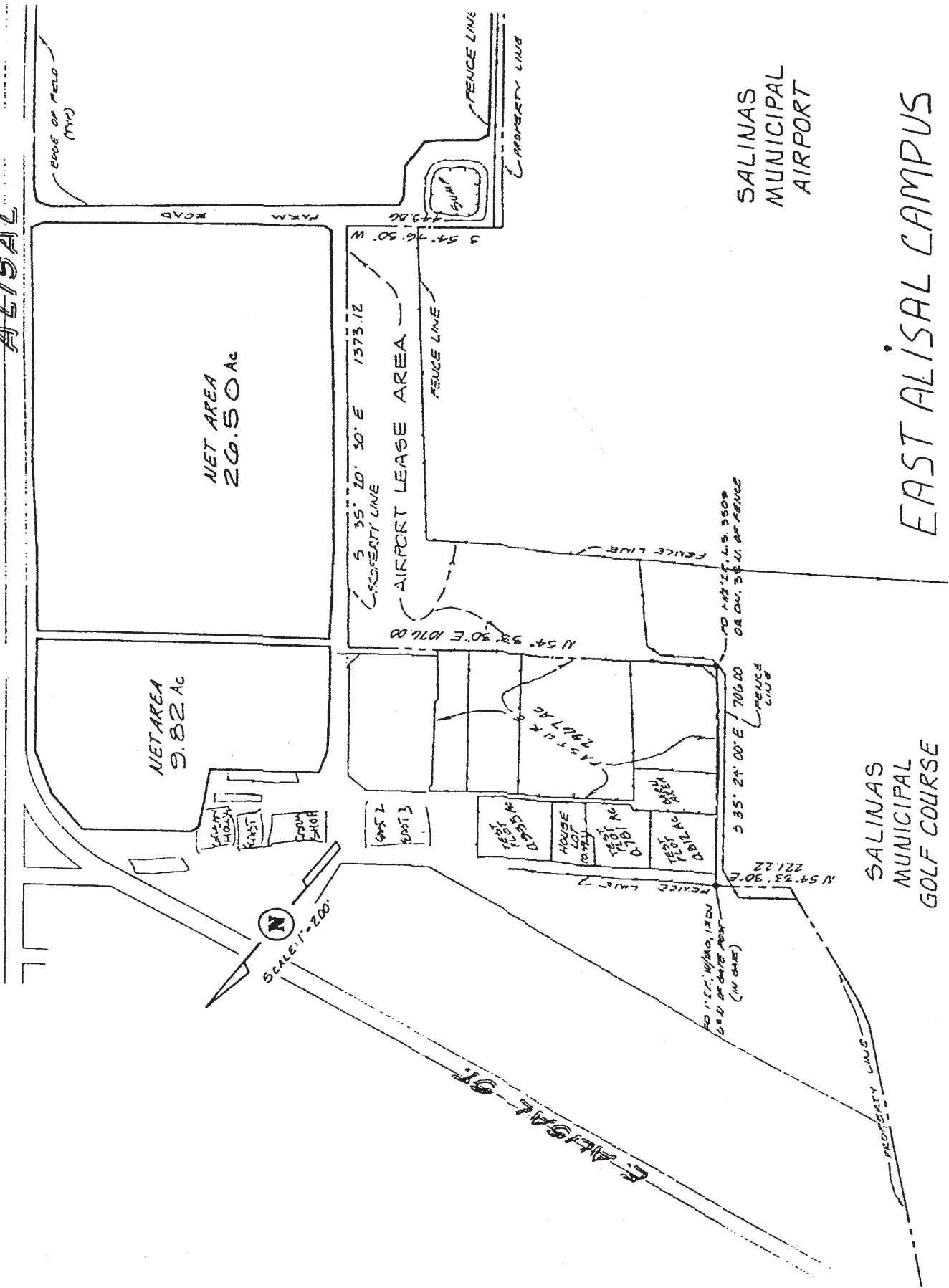
COLLEGE
CENTER
ANNEX
(ANX)



LEGEND

- 1 Animal Health Technology
- 2 Technology
- 3 Child Development Center
- 4 Maintenance/Operations/Receiving
- 5 Performing Arts
- 6 Storage
- 7 Tennis Courts
- 8 Visual Arts Facility
- 9 Amphitheater
- 10 Library
- 11 Physical Education
- 12 College Center (Bookstore/Cafeteria)
- 13 College Center Annex
- 14 Classroom/Administration/Admissions/Counseling
- 15 T.R. Merrill Hall
- 16 Portable Units 1-5
- 17 Planetarium
- 18 STAAR* Assessment Portable and Transfer Center

ALISAL

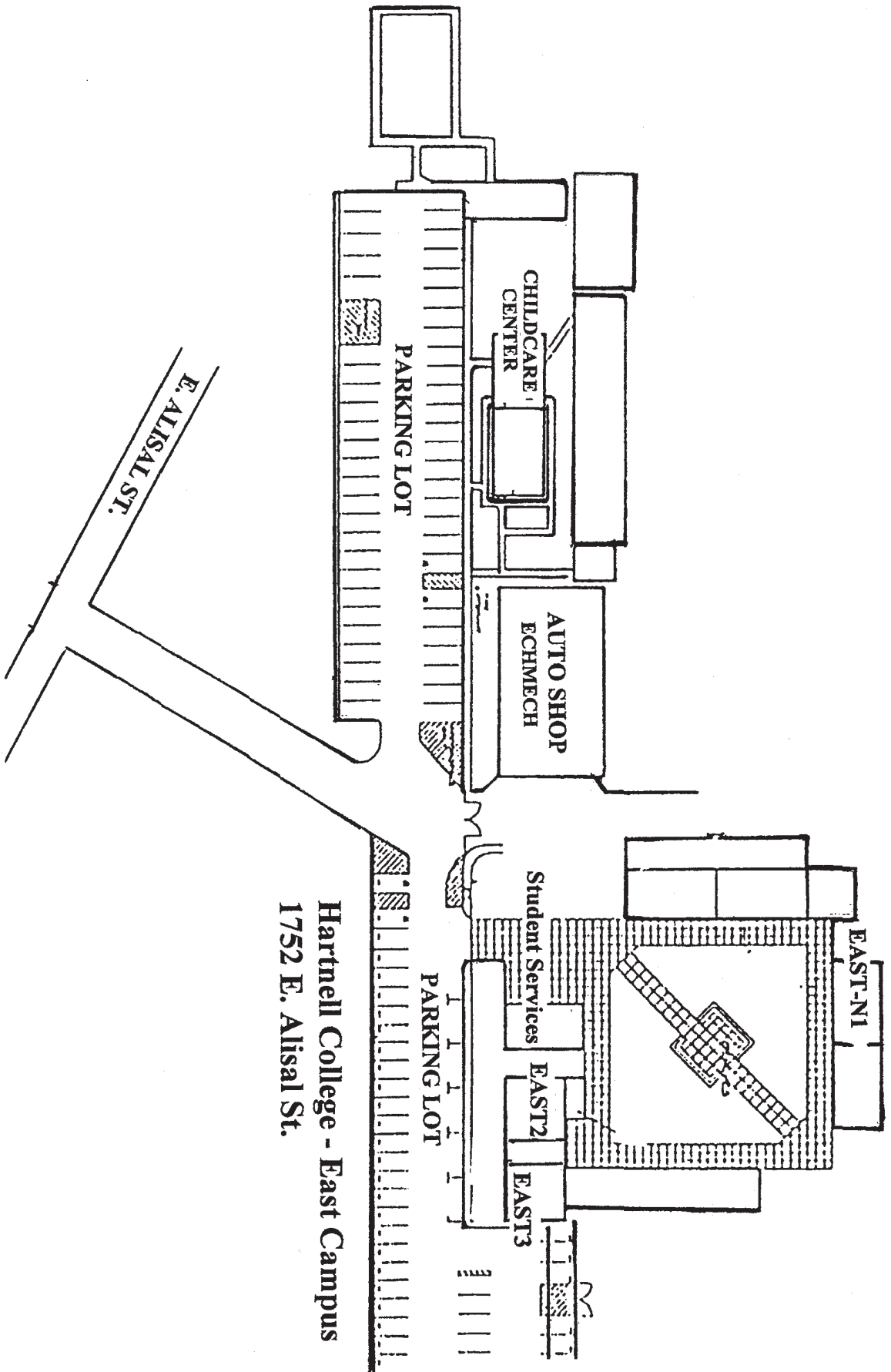


N
SCALE: 1" = 200'

SALINAS
MUNICIPAL
AIRPORT

EAST ALISAL CAMPUS

SALINAS
MUNICIPAL
GOLF COURSE



Hartnell College - East Campus
 1752 E. Alisal St.

