
VIII. STUDENT CHARACTERISTICS AND PROJECTED ENROLLMENT GROWTH

HIGH SCHOOL GRADUATES:

Table 8-1 depicts the number of actual and projected graduates from public high schools in the Hartnell College District and California as a whole. In 2013, 3,483 students are projected to graduate from area high schools, which is a 12% increase above 2003 figures. In contrast, the number of high school graduates are expected to increase by 18% across all California high schools during this time.

**Table 8-1
Actual and Projected High School Graduates
for Hartnell College District and California**

Group	Actual Number of Graduates	Projected Number of Graduates				2003 to 2013 Change	
	2003	2004	2005	2010	2013		
Hartnell District	3,097	3,254	3,278	3,435	3,483	386	12%
California Total	339,045	341,908	349,767	396,431	401,685	62,640	18%

Source: California Department of Finance, Demographic Research Unit.

Table 8-2 shows that 26% of 2004-05 local high school graduates attended Hartnell College in the fall of 2005, which is 2% more than those in the 2003-04 graduating class.

**Table
High School Graduates**

High School Attended	1999-2000			2000-01			2001-02		
	N of Recent HS Grads ¹	Attend Hartnell		N of Recent HS Grads ¹	Attend Hartnell		N of Recent HS Grads ¹	Attend Hartnell	
		N	%		N	%		N	%
Alisal	279	-- ²	N/A	364	-- ²	N/A	341	107	31%
Candy Butler ³	8	-- ²	N/A	8	-- ²	N/A	2	0	0%
Central Bay Cont.	6	-- ²	N/A	7	-- ²	N/A	15	0	0%
Chalone	30	-- ²	N/A	5	-- ²	N/A	2	0	0%
El Camino Cont.	10	-- ²	N/A	6	-- ²	N/A	13	1	8%
Everett Alvarez	232	-- ²	N/A	295	-- ²	N/A	326	122	37%
Gonzales	199	-- ²	N/A	129	-- ²	N/A	147	55	37%
Greenfield	N/A	-- ²	N/A	124	-- ²	N/A	162	39	24%
King City	304	-- ²	N/A	186	-- ²	N/A	166	53	32%
King City Adult School	0	-- ²	N/A	0	-- ²	N/A	0	0	0%
Liberty Family Acad.	12	-- ²	N/A	13	-- ²	N/A	16	0	0%
Mo. Co. Office of Edu.	11	-- ²	N/A	18	-- ²	N/A	1	0	0%
Mt. Toro Cont.	32	-- ²	N/A	23	-- ²	N/A	27	6	22%
N. Monterey Co.	461	-- ²	N/A	297	-- ²	N/A	274	64	23%
N. Monterey Co. Alt.	87	-- ²	N/A	92	-- ²	N/A	88	0	0%
North Salinas	313	-- ²	N/A	312	-- ²	N/A	333	134	40%
Notre Dame	96	-- ²	N/A	84	-- ²	N/A	109	11	10%
Palma	95	-- ²	N/A	110	-- ²	N/A	125	14	11%
Pinnacles Cont.	11	-- ²	N/A	6	-- ²	N/A	8	3	38%
Salinas	374	-- ²	N/A	393	-- ²	N/A	416	143	34%
Salinas Adult School	68	-- ²	N/A	46	-- ²	N/A	76	4	5%
Soledad	N/A	-- ²	N/A	116	-- ²	N/A	140	27	19%
Ventana Cont.	10	-- ²	N/A	9	-- ²	N/A	10	0	0%
Total	2,638	-- ²	N/A	2,643	-- ²	N/A	2,797	783	28%

Source: CBEDS, 1998-2005. Notre Dame and Palma Registrars, 1999-2005.
Hartnell full term data, Fall 1999-2005.

8-2
Attending Hartnell College

2002-03			2003-04			2004-05			2003-04 to 2004-05 Change			
N of Recent HS Grads ¹	Attend Hartnell		N of Recent HS Grads ¹	Attend Hartnell		N of Recent HS Grads ¹	Attend Hartnell		Recent Grads		Attend Hartnell	
	N	%		N	%		N	%	N	%	N	%
367	108	29%	322	101	31%	355	136	38%	33	10%	35	35%
14	0	0%	11	0	0%	16	0	0%	5	45%	0	0%
19	0	0%	20	0	0%	20	0	0%	0	0%	0	0%
4	0	0%	8	0	0%	10	0	0%	2	25%	0	0%
0	0	0%	0	0	0%	0	0	0%	0	0%	0	0%
350	136	39%	350	127	36%	349	130	37%	-1	<-1%	3	2%
134	36	27%	152	31	20%	111	40	36%	-41	-27%	9	29%
183	47	26%	191	44	23%	200	51	26%	9	5%	7	16%
186	38	20%	194	33	17%	218	42	19%	24	12%	9	27%
0	0	0%	35	1	3%	9	0	0%	-26	-74%	-1	-100%
30	0	0%	0	0	0%	0	0	0%	0	0%	0	0%
43	0	0%	43	0	0%	44	0	0%	1	2%	0	0%
39	8	21%	111	11	10%	30	7	23%	-81	-73%	-4	-36%
276	46	17%	299	30	10%	308	36	12%	9	3%	6	20%
87	0	0%	83	0	0%	94	2	2%	11	13%	2	NA
367	133	36%	308	132	43%	312	117	38%	4	1%	-15	-11%
83	11	13%	113	12	11%	88	5	6%	-25	-22%	-7	-58%
103	8	8%	124	13	10%	105	10	10%	-19	-15%	-3	-23%
3	2	67%	4	1	25%	17	1	6%	13	325%	0	0%
512	176	34%	425	159	37%	483	157	33%	58	14%	-2	-1%
177	1	1%	135	3	2%	55	2	4%	-80	-59%	-1	-33%
109	33	30%	116	28	24%	146	29	20%	30	26%	1	4%
11	0	0%	1	0	0%	1	0	0%	0	0%	0	0%
3,097	783	25%	3,045	726	24%	2,971	765	26%	-74	-2%	39	5%

¹ Only includes graduates receiving high school diplomas.

² Data not available due to Datatel transitioning.

³ Candy Butler High School formerly known as Los Padres Continuation High School.

STUDENT ENROLLMENT PROJECTIONS:

In Table 8-3, the actual and projected number of students who will enroll at Hartnell College is designated by area of residence. Between 2003 and 2020, Hartnell’s enrollment is predicted to grow by 2,678 students, a 19% increase. The largest proportion of new students will come from South County, with Gonzales (49% increase) and Soledad (49% increase) leading the way. The lowest rate of increase will be in Central County (17%).

Table 8-3 Hartnell College Actual and Projected Number of Students in Fall Semesters¹

Area/City	Actual Number of Students		Estimated Number of Students		Projected Number of Students ¹						2003 to 2020 Change	
	2003		2004		2010		2015		2020		Change	
	N	%	N	%	N	%	N	%	N	%	N	%
North												
Castroville	246	3%	254	3%	254	3%	276	3%	298	3%	52	18%
Moss Landing	12	<1%	13	<1%	13	<1%	14	<1%	15	<1%	3	19%
Prunedale ²	701	8%	848	10%	846	8%	920	8%	995	8%	294	30%
North Subtotal	959	11%	1,114	13%	1,112	11%	1,210	11%	1,308	11%	349	27%
Central												
Salinas	6,180	69%	6,126	69%	6,647	66%	7,035	65%	7,424	63%	1,244	17%
Spreckels	35	<1%	35	<1%	35	<1%	38	<1%	41	<1%	6	14%
Central Subtotal	6,215	69%	6,161	69%	6,682	66%	7,073	65%	7,465	64%	1,250	17%
South												
Bradley	1	<1%	1	<1%	1	<1%	1	<1%	1	<1%	0	19%
Chualar	71	1%	74	1%	74	1%	80	1%	87	1%	16	18%
Gonzales	344	4%	338	4%	500	5%	587	5%	674	6%	330	49%
Greenfield	462	5%	349	4%	494	5%	573	5%	651	6%	189	29%
King City	404	5%	364	4%	490	5%	552	5%	613	5%	209	34%
San Ardo	10	<1%	6	<1%	6	<1%	7	<1%	7	<1%	-3	-35%
San Lucas	16	<1%	8	<1%	8	<1%	9	<1%	10	<1%	-6	-62%
Soledad	476	5%	492	6%	694	7%	812	7%	930	8%	454	49%
South Subtotal	1,784	20%	1,633	18%	2,268	23%	2,621	24%	2,973	25%	1,189	40%
Outside Hartnell District	2,452	--- ³	1,928	--- ³	2,110	--- ³	2,230	--- ³	2,342	--- ³	-111	-5%
Total	11,410	100%	10,836	100%	12,172	100%	13,134	100%	14,088	100%	2,678	19%

Note: Percentages may not sum to 100% due to rounding.

¹ City of residence based on zip code.

² Zip code includes part of north Salinas.

³ Not included in percentage calculation.

Source: California Community Colleges Management Information Systems (MIS) Student full term data, Fall 1998-2003.

STUDENT COUNT AND FTES:

In the fall of 2004, 9,463 credit and non-credit students were enrolled at Hartnell College, a 6% decrease from 2003 (Table 8-4). First period full-time equivalent students (FTES) generally followed the same pattern as student count. FTES decreased To 7,005 in 2004.

**Table 8-4
Student Count and Full-Time Equivalent Student (FTES) Enrollment**

Enrollment	1999-2000	2000-01	2001-02	2002-03	2003-04	2004-05	2003-04 to 2004-05 Change	
							N	%
Credit Student Count¹								
Summer	4,635	4,643	4,782	6,198	4,191	4,244	53	1%
Fall	9,243	9,213	9,985	11,629	10,070	9,463	-607	-6%
Spring	10,311	9,864	12,037	11,825	11,119	10,389	-730	-7%
Non-Credit Student Count²								
Summer	0	26	46	98	0	0	0	0%
Fall	175	104	180	84	3	0	-3	-100%
Spring	282	188	96	0	0	4	4	0%
Total Credit and Non-Credit Student Count								
Summer	4,635	4,669	4,828	6,296	4,191	4,244	53	1%
Fall	9,418	9,317	10,165	11,713	10,073	9,463	-610	-6%
Spring	10,593	10,052	12,133	11,825	11,119	10,393	-726	-7%
Annual Credit and Non-Credit Student Count								
Duplicated ³	24,646	24,038	27,126	29,834	25,383	24,100	-1,283	-5%
Unduplicated	16,885	15,347	17,389	19,009	16,387	15,348	-1,039	0%
Not for Credit Student Count⁴	4,792	4,830	5,283	5,000	7,149	5,509	-1,640	-23%
Total Student Count⁵	29,438	28,868	32,409	34,834	32,532	29,609	-2,923	-9%
WSCH & FTES								
Fall WSCH ⁶	91,621	N/A	92,168	106,465	88,296	84,503	-3,793	-4%
First Period FTES ⁷	6,409	6,280	6,767	7,321	7,024	7,005	-19	0%
Annual FTES ⁷	6,548	6,686	6,922	7,285	7,038	6,586	-452	-6%

¹ Credit Student Count = Students taking at least a 0.5 unit or 8 hours of positive attendance for credit.

² Non-Credit Student Count = Students taking non-credit courses only, such as Emeritus classes.

³ Duplicated Student Count = The total number of students enrolled over Summer, Fall, and Spring semesters.

⁴ Not for Credit Student Count = Students taking community service classes offered by Workforce and Community Development.

⁵ Total Student Count = Duplicated Student Count plus Not for Credit Student Count.

⁶ WSCH = Weekly Student Contact Hours are counted for every hour a student has "contact" with an instructor.

⁷ FTES = Full-Time Equivalent Student is defined as one student taking 15 units over 17.5 weeks for two semesters.

Source: California Community Colleges Management Information Systems (MIS) Student Full Term Reports: Summer, Fall, Spring 1999-2005.

Workforce and Community Development Recap of Programs, 1998-2005.

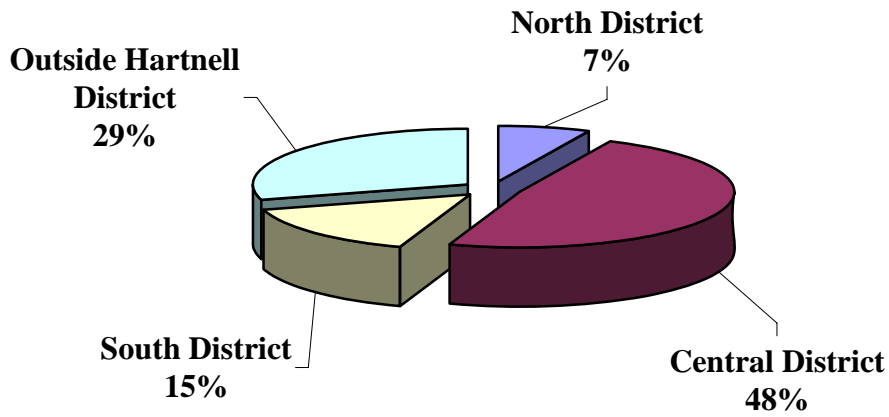
California Community Colleges, Fiscal Data Abstracts, 1999-2005.

Integrated Postsecondary Education Data System (IPEDS) Enrollment Survey, 2001-05.

ENROLLMENT BY CITY:

Enrollment is broken down by geographical area and city of residence in Graph 8-5 and Table 8-5. They show that 48% of Hartnell’s students lived in Salinas and the central portion of the Hartnell College District. Approximately one-sixth of the students resided in the south Salinas Valley and an additional 7% of the student body lived in the northern part of the District. The remainder (29%) live outside the Hartnell District.

Graph 8-5
Percent of Fall 2005 Enrollment by Area



**Table 8-5
Fall Enrollment by City**

Area/City ¹	2000		2001		2002		2003		2004		2005		2004 to 2005 Change	
	N	%	N	%	N	%	N	%	N	%	N	%	N	%
North														
Castroville	217	2%	269	3%	281	2%	209	2%	177	2%	147	2%	-30	-17%
Moss Landing	10	<1%	19	<1%	18	<1%	10	<1%	9	<1%	16	<1%	7	78%
Prunedale ²	725	8%	795	8%	824	7%	595	6%	496	5%	505	5%	9	2%
North Subtotal	952	10%	1,083	11%	1,123	10%	814	8%	682	7%	668	7%	-14	-2%
Central														
Salinas	5,298	57%	5,685	56%	6,138	52%	5,394	54%	4,687	50%	4,729	48%	42	1%
Spreckels	31	<1%	25	<1%	36	<1%	30	<1%	26	<1%	16	<1%	-10	-38%
Central Subtotal	5,329	57%	5,710	56%	6,174	53%	5,424	54%	4,713	50%	4,745	48%	32	1%
South														
Bradley	0	0%	1	<1%	0	0%	1	<1%	1	<1%	1	<1%	0	0%
Chualar	65	1%	55	1%	63	1%	67	1%	57	1%	66	1%	9	16%
Gonzales	284	3%	298	3%	326	3%	307	3%	277	3%	266	3%	-11	-4%
Greenfield	304	3%	334	3%	393	3%	408	4%	397	4%	433	4%	36	9%
Jolon	1	<1%	0	0%	9	<1%	5	<1%	1	<1%	1	<1%	0	0%
King City	323	3%	319	3%	417	4%	359	4%	331	3%	313	3%	-18	-5%
Lockwood	2	<1%	1	<1%	6	<1%	4	<1%	8	<1%	5	<1%	-3	-38%
San Ardo	5	<1%	9	<1%	14	<1%	7	<1%	11	<1%	4	<1%	-7	-64%
San Lucas	8	<1%	8	<1%	11	<1%	15	<1%	9	<1%	13	<1%	4	44%
Soledad	347	4%	365	4%	440	4%	385	4%	376	4%	394	4%	18	5%
South Subtotal	1,339	14%	1,390	14%	1,679	14%	1,558	15%	1,468	16%	1,496	15%	28	2%
Outside Hartnell District	1,689	18%	1,972	19%	2,727	23%	2,277	23%	2,600	27%	2,875	29%	275	11%
Not Specified	8	-³	10	-³	10	-³	0	-³	0	-³	0	-³	0	N/A
Total	9,317	100%	10,165	100%	11,713	100%	10,073	100%	9,463	100%	9,784	100%	321	3%

Note: Percentages may not sum to 100% due to rounding.

¹ City of residence based on zip code.

² Zip code includes part of north Salinas.

³ Not included in percentage calculation.

Source: California Community Colleges Management Information Systems (MIS) Student full term data, Fall 2000-2005.

ENROLLMENT BY CLASS LOCATION:

Table 8-6 shows duplicated enrollment by location for fall semesters, 2000-05. In fall, 2005, the majority (83%) of student enrollments were at Hartnell’s main campus. King City, other Salinas sites, and sites outside the Hartnell District contributed most of the remaining enrollments. The total number of enrollments for all sites decreased by 4% between 2004 and 2005.

Table 8-6
Fall Duplicated Enrollment¹ by Location

Location	2000		2001		2002		2003		2004		2005		2004 to 2005 Change	
	N	%	N	%	N	%	N	%	N	%	N	%	N	%
Castroville	48	<1%	57	<1%	58	<1%	55	<1%	48	<1%	50	<1%	2	4%
Gonzales	0	0%	0	0%	0	0%	0	0%	0	0%	0	0%	0	N/A
Greenfield	128	1%	105	<1%	51	<1%	58	<1%	75	<1%	97	<1%	22	29%
King City														
City Center	- ²	N/A	- ²	N/A	720	3%	991	4%	997	4%	882	3%	-115	-12%
Gleason Center	216	1%	103	<1%	0	0%	0	0%	0	0%	0	0%	0	N/A
High School	226	1%	299	1%	0	0%	0	0%	0	0%	0	0%	0	N/A
Other	19	<1%	153	1%	106	<1%	29	<1%	34	<1%	26	<1%	-8	-24%
No.Mo.Co. High School	146	1%	117	<1%	184	1%	20	<1%	25	<1%	22	<1%	-3	-12%
Off Campus In District	98	<1%	0	0%	30	<1%	111	<1%	57	<1%	28	<1%	-29	-51%
Out of District	754	3%	1,391	5%	1,991	9%	1,610	6%	1,895	8%	2,241	9%	346	15%
Salinas														
East Campus	371	1%	545	2%	466	2%	283	1%	229	1%	305	1%	76	33%
Main Campus	23,018	91%	22,674	87%	18,912	81%	23,021	85%	21,087	84%	21,767	83%	680	3%
Natividad Med. Center	15	<1%	382	1%	577	2%	653	2%	639	3%	636	2%	-3	<-1%
Other Salinas Sites	80	<1%	104	<1%	114	<1%	126	<1%	51	<1%	13	<1%	-38	-75%
Soledad														
Correctional Train. Fac.	0	0%	43	<1%	52	<1%	25	<1%	1	<1%	0	0%	-1	-100%
High School	61	<1%	38	<1%	46	<1%	19	<1%	64	<1%	210	1%	146	228%
Total	25,180	100%	26,011	100%	23,307	100%	27,001	100%	25,202	100%	26,277	100%	1,075	4%

Note: Percentages may not sum to 100% due to rounding

¹ Duplicated enrollment counts each course taken at each location. Thus, a student enrolled in three courses is counted three times.

² Courses not offered at this location.

Source: California Community Colleges Management Information Systems (MIS) Student Full term data, Fall 2000-02

Hartnell EIS System 2003-05

ENROLLMENT BY ETHNICITY:

In Graph 8-7 and Table 8-7, fall semester student enrollment is broken down by ethnicity. They show that 57% of Hartnell College students were Latino in fall 2005, followed by Whites (29%), Filipinos (4%), Asian/Pacific Islanders (4%), African Americans (4%), American Indians (1%), and other minorities (1%).

Between 2000 and 2005, the proportion of African Americans, American Indians, Asian/Pacific Islanders, and Filipinos remained relatively constant. However, significant increases were seen among the percentage of Latino students (52% to 57%). Conversely, the proportion of White students decreased (33% to 29%). As a result of these changes in the ethnic distribution of students, ethnic student enrollment increased from 67% to 71% of the student body.

One reason for the change in the ethnic profile of the College is that the proportion of ethnic minorities in the Hartnell District population has increased in recent years.

**Graph 8-7
Percent of Enrollment by Ethnicity**

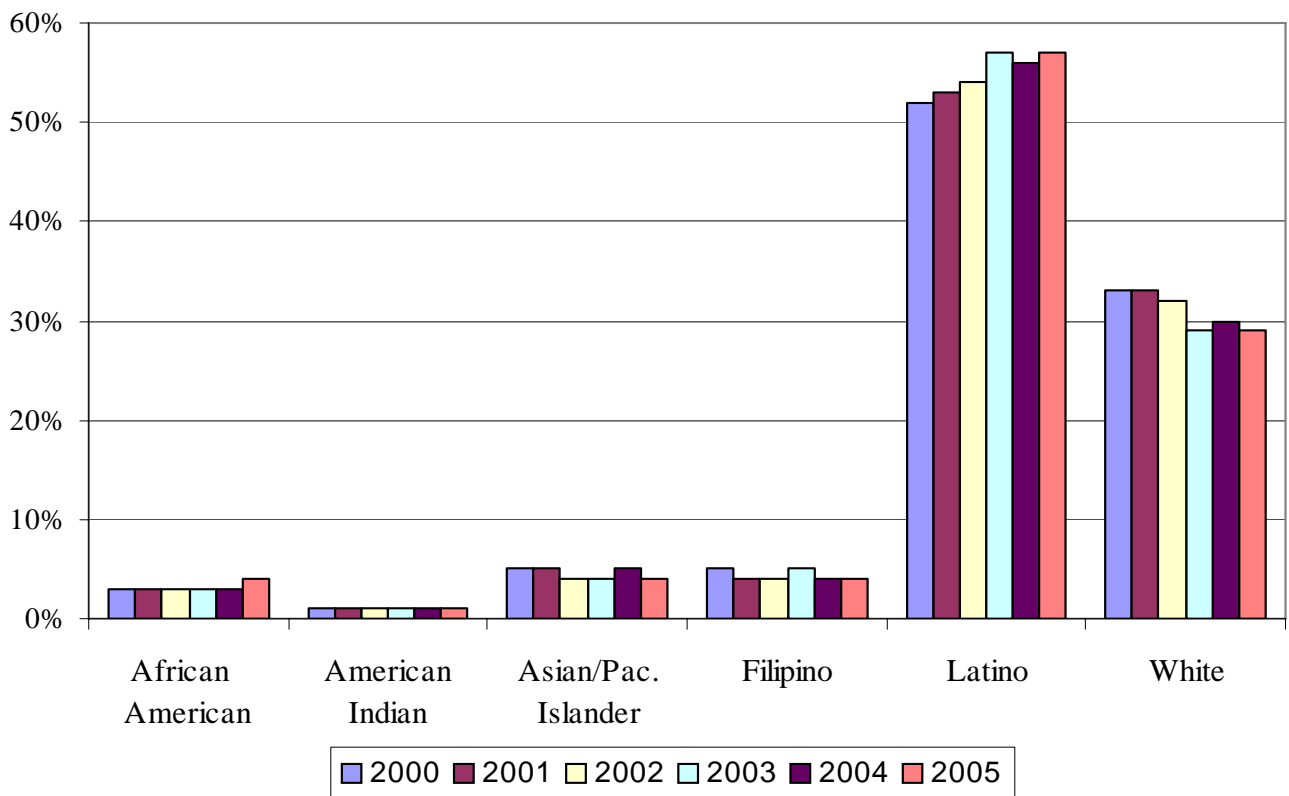


Table 8-7
Fall 2005 Enrollment by Ethnicity

	2000		2001		2002		2003		2004		2005		2004 to 2005 Change	
	N	%	N	%	N	%	N	%	N	%	N	%	N	%
African American	265	3%	312	3%	358	3%	286	3%	262	3%	330	4%	68	26%
American Indian	86	1%	93	1%	88	1%	79	1%	73	1%	74	1%	1	1%
Asian/Pac. Islander														
Cambodian	2	<1%	3	<1%	3	<1%	1	<1%	6	<1%	3	<1%	-3	-50%
Chinese	85	1%	90	1%	102	1%	71	1%	77	1%	80	1%	3	4%
East Indian	19	<1%	20	<1%	23	<1%	23	<1%	20	<1%	13	<1%	-7	-35%
Japanese	140	2%	141	1%	117	1%	95	1%	101	1%	90	1%	-11	-11%
Korean	49	1%	63	1%	63	1%	45	<1%	42	<1%	41	<1%	-1	-2%
Laotian	10	<1%	20	<1%	19	<1%	8	<1%	7	<1%	4	<1%	-3	-43%
Vietnamese	31	<1%	43	<1%	42	<1%	45	<1%	49	1%	43	<1%	-6	-12%
Other Asian	31	<1%	31	<1%	23	<1%	26	<1%	21	<1%	14	<1%	-7	-33%
Guamanian	11	<1%	16	<1%	13	<1%	12	<1%	11	<1%	18	<1%	7	64%
Hawaiian	16	<1%	25	<1%	28	<1%	22	<1%	26	<1%	19	<1%	-7	-27%
Samoan	8	<1%	10	<1%	12	<1%	6	<1%	7	<1%	8	<1%	1	14%
Other Pac. Islander	19	<1%	17	<1%	21	<1%	13	<1%	24	<1%	19	<1%	-5	-21%
Total Asian/Pac. Is.	421	5%	479	5%	466	4%	367	4%	391	5%	352	4%	-39	-10%
Filipino	417	5%	400	4%	467	4%	448	5%	350	4%	326	4%	-24	-7%
Latino														
Mexican	3,984	45%	4,237	44%	4,822	45%	4,389	48%	3,979	47%	4,131	48%	152	4%
Central American	56	1%	100	1%	163	2%	133	1%	153	2%	198	2%	45	29%
South American	86	1%	152	2%	221	2%	188	2%	173	2%	188	2%	15	9%
Other Latino	530	6%	534	6%	577	5%	524	6%	453	5%	439	5%	-14	-3%
Total Latino	4,656	52%	5,023	53%	5,783	54%	5,234	57%	4,758	56%	4,956	57%	198	4%
White	2,942	33%	3,105	33%	3,496	32%	2,679	29%	2,549	30%	2,538	29%	-11	0%
Other Minorities	130	1%	117	1%	123	1%	89	1%	82	1%	66	1%	-16	-20%
Not Reported	400	-- ¹	636	-- ¹	934	-- ¹	892	-- ¹	998	-- ¹	1,142	-- ¹	144	-- ¹
Total	9,317	100%	10,165	100%	11,715	100%	10,074	100%	9,463	100%	9,784	100%	321	3%
Total Minority	5,975	67%	6,424	67%	7,285	68%	6,503	71%	5,916	70%	6,104	71%	188	3%

Note: Percentages may not sum to 100% due to rounding.

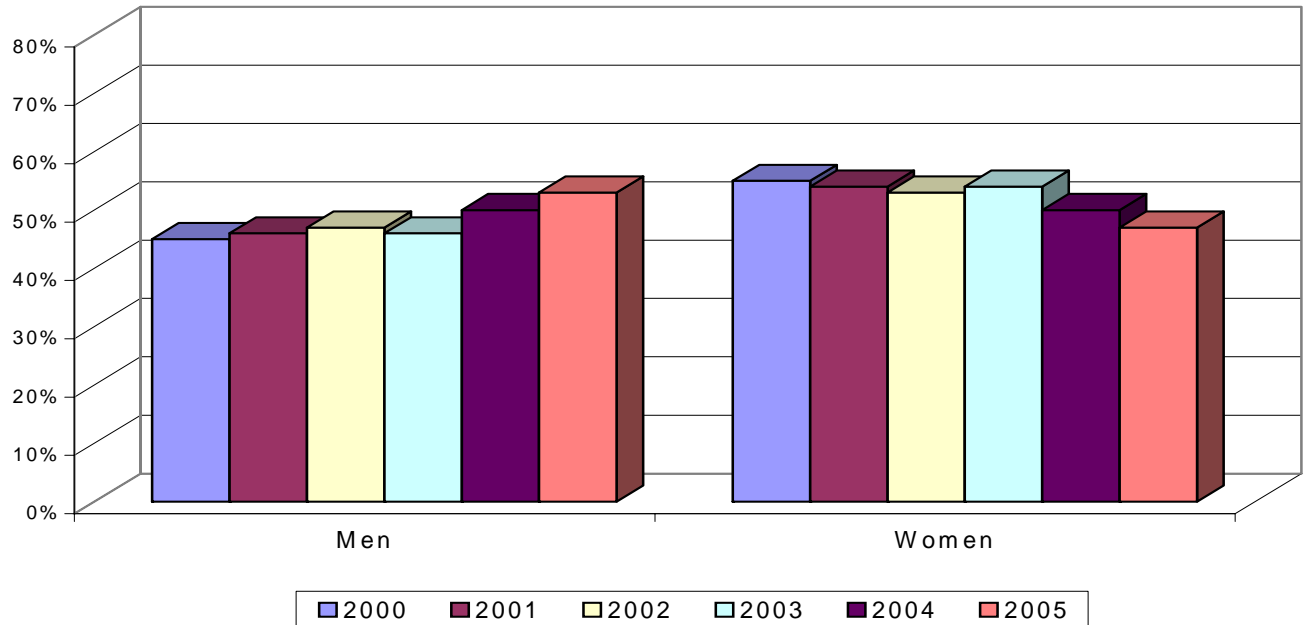
¹ Not included in percentage calculation.

Source: California Community Colleges Management Information Systems (MIS) Student Full Term Reports, Fall 2000-2005.

ENROLLMENT BY GENDER:

In the fall of 2005, 53% of Hartnell’s students were men and 47% were women, as shown in Graph 8-8 and Table 8-8. Between 2000 and 2005, the proportion of men increased, while the proportion of women decreased.

**Graph 8-8
Fall Enrollment by Gender**



**Table 8-8
Fall Enrollment by Gender**

Gender	2000		2001		2002		2003		2004		2005		2004 to 2005 Change	
	N	%	N	%	N	%	N	%	N	%	N	%	N	%
Men	4,093	45%	4,578	46%	5,496	47%	4,604	46%	4,756	50%	5,111	53%	355	7%
Women	5,035	55%	5,334	54%	6,205	53%	5,447	54%	4,670	50%	4,622	47%	-48	-1%
Not Specified	189	- ¹	253	- ¹	14	- ¹	23	- ¹	37	- ¹	51	- ¹	14	38%
Total	9,317	100%	10,165	100%	11,715	100%	10,074	100%	9,463	100%	9,784	100%	321	3%

Note: Percentages may not sum to 100% due to rounding.

¹Not included in percentage calculation.

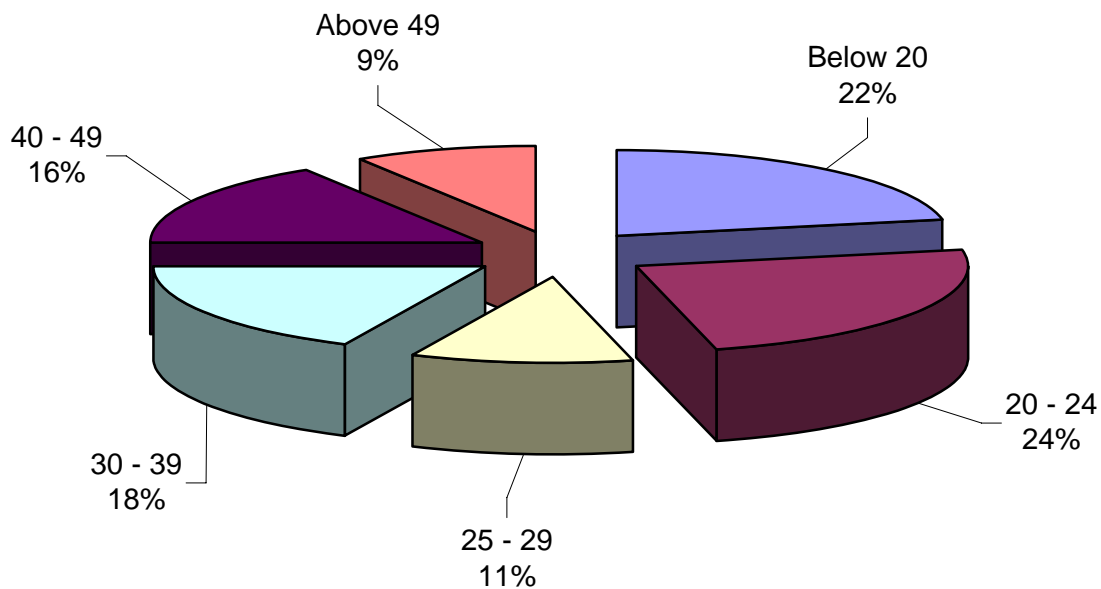
Source: California Community Colleges Management Information Systems (MIS) Student Full Term Reports, Fall 2000-2005.

ENROLLMENT BY AGE:

Graph 8-9 (below) and Table 8-9 display the distribution of Hartnell students by age. They show that in fall 2005, 22% of the students were less than 20 years old, approximately one-fourth were between ages 20 and 24, 45% were 25 to 49, and 9% were 50 or older.

This graph and table also show that since 2000 the distribution of students was growing somewhat older. Between 2000 and 2005, the proportion of students younger than 20 declined from 25% to 22% of the student body. Similarly, students older than 39 increased from 21% to 25%. The increase in older students may be the result of larger enrollments in the administration of justice courses offered outside the Hartnell College district through the Joint Powers agreement.

Graph 8-9
Percentages of Fall 2005 Enrollment by Age



**Table 8-9
Fall Enrollment by Age**

Age	2000		2001		2002		2003		2004		2005		2004 to 2005 Change	
	N	%	N	%	N	%	N	%	N	%	N	%	N	%
Below 20	2,352	25%	2,459	24%	2,863	24%	2,377	24%	2,024	21%	2,147	22%	123	5%
20 - 24	2,200	24%	2,374	23%	2,594	22%	2,403	24%	2,355	25%	2,313	24%	-42	-2%
25 - 29	1,086	12%	1,121	11%	1,345	12%	1,159	12%	1,087	12%	1,099	11%	12	1%
30 - 39	1,634	18%	1,848	18%	2,181	19%	1,861	18%	1,672	18%	1,737	18%	65	3%
40 - 49	1,158	12%	1,400	14%	1,669	14%	1,481	15%	1,494	16%	1,585	16%	91	6%
Above 49	865	9%	945	9%	1,041	9%	781	8%	817	9%	883	9%	66	8%
Not Specified	22	*	18	*	22	*	12	*	14	*	20	*	6	50%
Total	9,295	100%	10,165	100%	11,715	100%	10,074	100%	9,463	100%	9,784	100%	321	3%

Note: Percentages may not sum to 100% due to rounding.

*Not included in percentage calculation.

Source: California Community Colleges Management Information Systems (MIS) Student Full Term Reports, Fall 2000-2005.

ENROLLMENT STATUS:

In fall 2005, approximately three-fifth of Hartnell’s students were continuing from the spring 2005 semester, and 13% were new students to higher education. An additional 7% were new transfer students from other higher education institutions and 4% were K-12 students. Compared to 2001, the proportions of continuing students and returning students increased, while the percentage of students new to higher education, new transfer, and K-12 students decreased.

**Graph 8-10
Percent of Fall 2005 Enrollment by Enrollment Status**

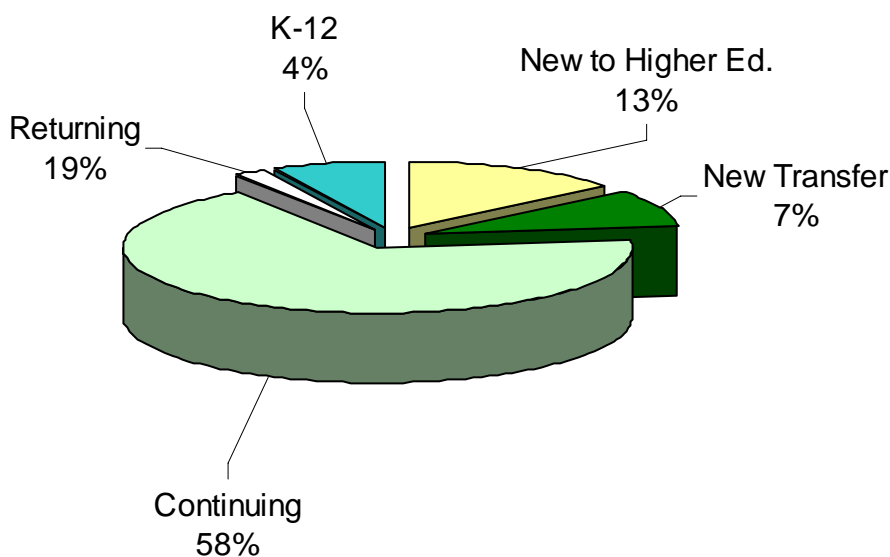


Table 8-10
Fall Enrollment by Enrollment Status

Enrollment Status	2000		2001		2002		2003		2004		2005		2004 to 2005 Change	
	N	%	N	%	N	%	N	%	N	%	N	%	N	%
New to Higher Ed.	-- ¹	N/A	1,886	19%	3,205	28%	1,388	14%	1,988	21%	1,225	13%	-763	-38%
New Transfer	-- ¹	N/A	965	10%	1,433	12%	905	9%	1,040	11%	671	7%	-369	-35%
Continuing	-- ¹	N/A	5,114	52%	6,055	53%	6,791	68%	5,684	61%	5,699	58%	15	<1%
Return. Hartnell ³	-- ¹	N/A	898	9%	-- ³	N/A	-- ³	N/A	-- ³	N/A	-- ³	N/A	N/A	N/A
Return. Transfer ³	-- ¹	N/A	29	<1%	-- ³	N/A	-- ³	N/A	-- ³	N/A	-- ³	N/A	N/A	N/A
Returning ³	N/A	N/A	N/A	N/A	646	6%	194	2%	319	3%	1,828	19%	1,509	473%
K - 12	-- ¹	N/A	960	10%	129	1%	722	7%	364	4%	361	4%	-3	-1%
Unknown	-- ¹	N/A	313	-- ²	247	-- ²	74	-- ²	68	-- ²	0	-- ²	-68	100%
Total	0	N/A	10,165	100%	11,715	100%	10,074	100%	9,463	100%	9,784	100%	321	3%

Note: Percentages may not sum to 100% due to rounding.

¹Data not available due to Datatel transitioning.

²Not included in percentage calculation.

³Returning Hartnell students and Returning Transfer students were combined into Returning students category in 2002.

Source: California Community Colleges Management Information Systems (MIS) Student Full Term Reports, Fall 2000-2005.

ENROLLMENT BY FULL-TIME/PART-TIME STATUS:

Graph 8-11 and Table 8-11 show that 73% of Hartnell's students attended the college on a part-time basis (fewer than 12 credit hours), while 27% were full-time students (12 or more credit hours) in fall 2005. Between 2000 and 2002, the proportion of full-time students to the portion of part-time students decreased, but then increased steadily through 2005.

Graph 8-11 – Percentages of Fall Enrollment by Full-Time/Part-Time Status

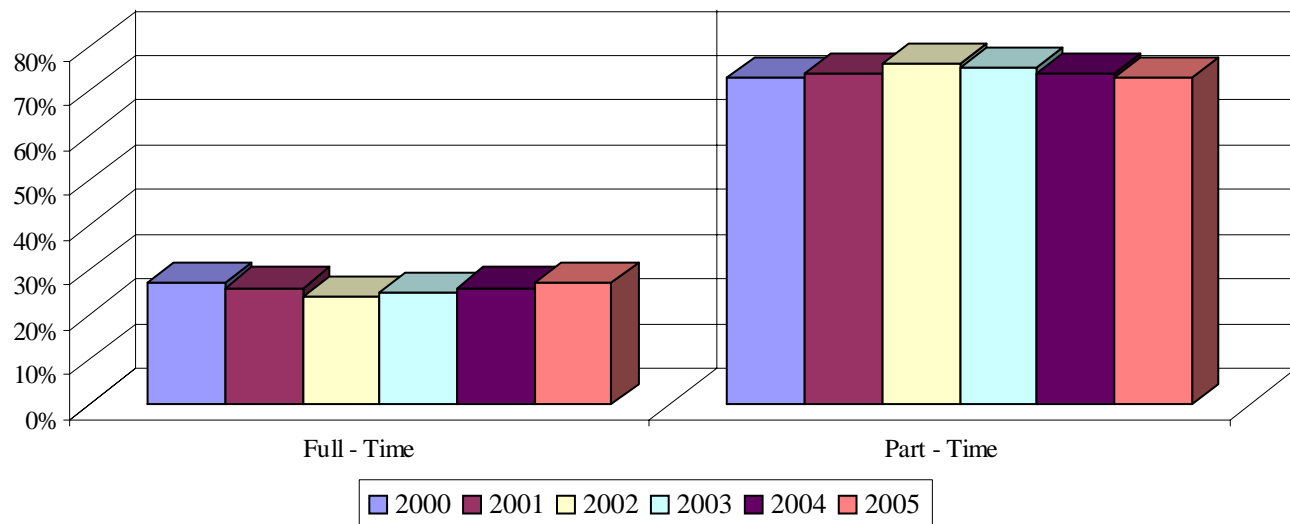


Table 11
Fall Enrollment by Full-Time/Part-Time Status

Status	2000		2001		2002		2003		2004		2005		2004 to 2005 Change	
	N	%	N	%	N	%	N	%	N	%	N	%	N	%
Full-Time	2,560	27%	2,603	26%	2,802	24%	2,496	25%	2,467	26%	2,605	27%	138	6%
Part-Time	6,757	73%	7,562	74%	8,913	76%	7,578	75%	6,996	74%	7,179	73%	183	3%
Total	9,317	100%	10,165	100%	11,715	100%	10,074	100%	9,463	100%	9,784	100%	321	3%

Note: Percentages may not sum to 100% due to rounding

Source: California Community College Management Information System (MIS) Student Full Term Reports, Fall 2000-2005.

ENROLLMENT BY EDUCATIONAL GOAL:

Graph 8-12 and Table 8-12 show the primary educational goals of students when they enrolled at Hartnell College. In fall 2005, 30% of the students were preparing for a new career or advancing in their current career, 22% intended to transfer to a four-year college or university, 15% were undecided about their goals, and 15% were taking developmental education classes. In addition, 10% of the students were seeking a degree or certificate only, 6% were at Hartnell for discovery, and 3% were taking classes for personal interest. Between 2000 and 2005, the proportion of students taking career courses increased, while the proportion who were undecided decreased.

Graph 8-12
Percentages of Fall 2005 Enrollment by Educational Goal

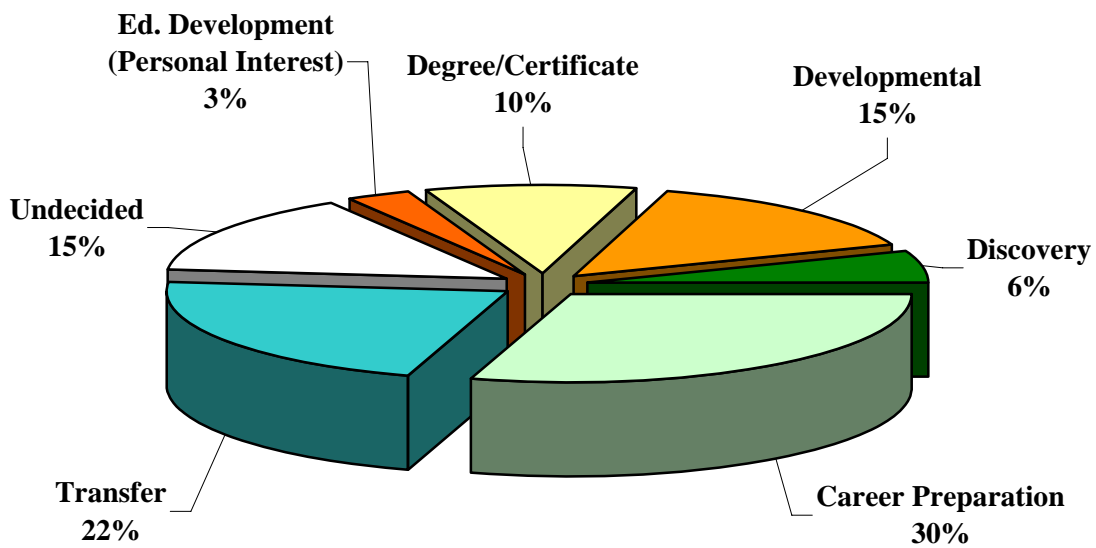


Table 8-12
Fall Enrollment by Educational Goal

Educational Goal	2000		2001		2002		2003		2004		2005		2004 to 2005 Change	
	N	%	N	%	N	%	N	%	N	%			N	%
Transfer w/ AA	722	19%	1,400	21%	2,408	21%	1,981	20%	1,845	20%	1,861	19%	16	1%
Transfer w/o AA	102	3%	218	3%	403	3%	316	3%	293	3%	297	3%	4	1%
Assoc. Deg. (G.E.)	249	6%	476	7%	800	7%	661	7%	618	7%	585	6%	-33	-5%
Assoc. Deg. (Voc.)	67	2%	110	2%	295	3%	216	2%	179	2%	175	2%	-4	-2%
Voc. Certificate	95	2%	174	3%	347	3%	281	3%	213	2%	211	2%	-2	-1%
Discovery	176	5%	337	5%	836	7%	754	8%	622	7%	609	6%	-13	-2%
Prep. for Career	478	12%	593	9%	1,034	9%	868	9%	833	9%	746	8%	-87	-10%
Maint./Adv. Career Certificate/License	306	8%	625	9%	1,319	11%	1,438	14%	1,633	17%	1,843	19%	210	13%
Ed. Development	63	2%	161	2%	292	3%	287	3%	242	3%	263	3%	21	9%
Ed. Development	170	4%	323	5%	417	4%	324	3%	289	3%	294	3%	5	2%
Imprv. Basic Skills	119	3%	264	4%	385	3%	378	4%	332	4%	344	4%	12	4%
HS Diploma/GED	215	6%	475	7%	885	8%	930	9%	944	10%	1,091	11%	147	16%
Undecided	1,073	28%	1,598	24%	2,167	19%	1,549	16%	1,372	15%	1,425	15%	53	4%
Unknown	5,482	-- ¹	3,411	-- ¹	125	-- ¹	90	-- ¹	48	-- ¹	40	-- ¹	-8	-17%
Total	9,317	100%	10,165	100%	11,713	100%	10,073	100%	9,463	100%	9,784	100%	289	3%

Note: Percentages may not sum to 100% due to rounding.

¹ Not included in percentage calculation.

Source: California Community Colleges Management Information Systems (MIS) Student full term data, Fall 2000-2005.

CONCLUSIONS:

Student enrollment will continue to reflect the growth of the population in the Hartnell College district. Hartnell will need to effectively adapt to these changing demographics.