


Turn On and Use Magnifier

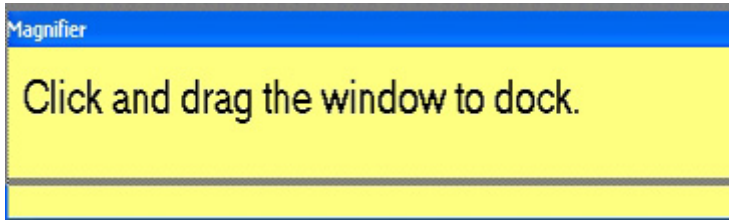
Magnifier is a display utility that makes the computer screen more readable by people who have low vision by creating a separate window that displays a magnified portion of the screen. Magnifier provides a minimum level of functionality for people who have slight visual impairments. This procedure tells you how to turn on and use Magnifier.

	Mouse actions	Keyboard actions
1	<p>On the Start menu:</p> <ul style="list-style-type: none"> Point to All Programs. Point to Accessories. Point to Accessibility. Select Magnifier. <p>Notes: A message box with a link to more information about Microsoft Magnifier may appear. To close the box, select OK.</p> <p>To use Magnifier but hide the Magnifier Settings dialog box, select the Minimize button.</p> <p>To turn off Magnifier, in the Magnifier Settings dialog box, select the Exit button.</p>	<p>Display the Start menu by pressing CTRL+ESC (or the Windows logo key .</p> <ul style="list-style-type: none"> Press R. Type magnify. Press ENTER. <p>Notes: A message box with a link to more information about Microsoft Magnifier may appear. To close the box, press ENTER.</p> <p>To use Magnifier but hide the Magnifier Settings dialog box, select Minimize by pressing ALT+SPACEBAR, N.</p> <p>To turn off Magnifier, in the Magnifier Settings dialog box, press ALT+X.</p>

Change the Position of the Magnifier Window

Magnifier is a display utility that makes the computer screen more readable by people who have low vision by creating a separate window that displays a magnified portion of the screen. Magnifier provides a minimum level of functionality for people who have slight visual impairments. Magnifier can be customized in several ways. This procedure tells you how to change the position of the Magnifier window so it is more convenient on screen. See also, the Step by Step Tutorial [Turn On and Use Magnifier](#).

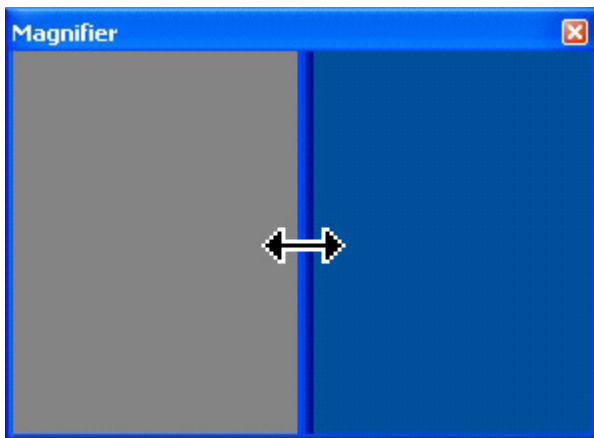
	Mouse actions	Keyboard actions
1	<p>With Magnifier turned on:</p> <ul style="list-style-type: none"> Move the pointer over the Magnifier window. Hold down the mouse button and drag the Magnifier window to reposition it. 	<p>With Magnifier turned on, and the Magnifier Settings dialog box selected: To change the position of the window:</p> <ul style="list-style-type: none"> Press ALT+F6. Press ALT+SPACEBAR. Press M. Move the Magnifier window to the position you want by pressing the arrow keys. Press ENTER.



Change the Size of the Magnifier Window

Magnifier is a display utility that makes the computer screen more readable by people who have low vision by creating a separate window that displays a magnified portion of the screen. Magnifier provides a minimum level of functionality for people who have slight visual impairments. Magnifier can be customized in several ways. This procedure tells you how you can resize the Magnifier window to suit your needs and preferences. See also, the Step by Step Tutorial [Turn On and Use Magnifier](#).


	Mouse actions	Keyboard actions
1	With Magnifier turned on: <ul style="list-style-type: none"> • Move the pointer over an edge of the Magnifier window. • When the mouse pointer becomes a two-headed arrow, hold down the mouse button and drag the Magnifier window to resize it. 	With Magnifier turned on, and the Magnifier Settings dialog box selected: To change the size of the window: <ul style="list-style-type: none"> • Press ALT+F6. • Press ALT+SPACEBAR. • Press S. • Press an arrow key until the mouse pointer becomes a two-headed arrow on the side or corner of the Magnifier window. • Continue pressing the arrow keys until the Magnifier window is the size you want. • Press ENTER.

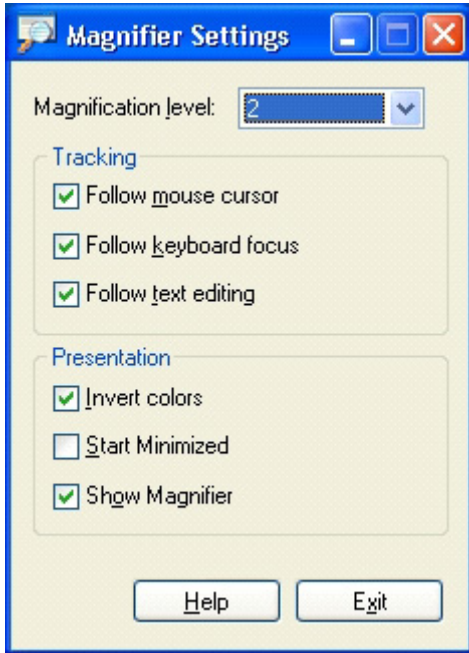


Magnifier: Change the size of the Magnifier window

Set the Magnifier Magnification Level

Magnifier is a display utility that makes the computer screen more readable by people who have low vision by creating a separate window that displays a magnified portion of the screen. Magnifier provides a minimum level of functionality for people who have slight visual impairments. Magnifier can be customized in several ways. This procedure tells you how to change the magnification level of Magnifier to make text and images larger or smaller within the Magnifier window.


	Mouse actions	Keyboard actions
1	<p>On the Start menu:</p> <ul style="list-style-type: none"> • Point to All Programs. • Point to Accessories. • Point to Accessibility. • Select Magnifier. <p>Note: A message box with a link to more information about Microsoft Magnifier may appear. To close the box, select OK.</p>	<p>Display the Start menu by pressing CTRL+ESC (or the Windows logo key .</p> <ul style="list-style-type: none"> • Press R. • Type magnify. • Press ENTER. • Move to the Magnification Level box by pressing ALT+L. <p>Note: A message box with a link to more information about Microsoft Magnifier may appear. To close the box, press ENTER.</p>
2	<p>In the Magnifier Settings dialog box, under Magnification level:</p> <ul style="list-style-type: none"> • Adjust the level of magnification by typing a number from 1 to 9, or by selecting the arrow button to open the list of options. <p>Notes: To use Magnifier but hide the Magnifier Settings dialog box, select the Minimize button.</p> <p>To turn off Magnifier, in the Magnifier Settings dialog box, select the Exit button.</p>	<p>In the Magnifier Settings dialog box:</p> <ul style="list-style-type: none"> • Move to the Magnification Level box by pressing ALT+L. • Select a magnification level between 1 and 9 by pressing the UP ARROW or DOWN ARROW key. <p>Notes: To use Magnifier but hide the Magnifier Settings dialog box, select Minimize by pressing ALT+SPACEBAR, N.</p> <p>To turn off Magnifier, in the Magnifier Settings dialog box, press ALT+X.</p>



Magnifier: Magnifier Settings: Magnification level

Set Magnifier Tracking Options

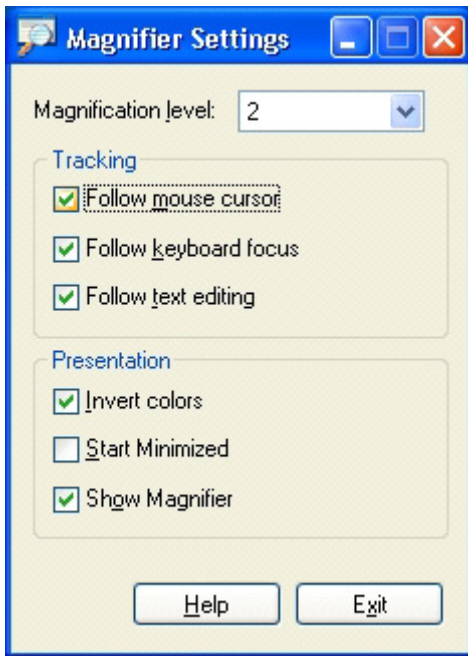
Magnifier is a display utility that makes the computer screen more readable by people who have low vision by creating a separate window that displays a magnified portion of the screen. Magnifier provides a minimum level of functionality for people who have slight visual impairments. Magnifier can be customized in several ways including the selection of tracking options. This procedure tells you how to select Magnifier tracking options.

	Mouse actions	Keyboard actions
1	<p>On the Start menu:</p> <ul style="list-style-type: none"> Point to All Programs. Point to Accessories. Point to Accessibility. Select Magnifier. <p>Note: A message box with a link to more information about Microsoft Magnifier may appear. To close the box, select OK.</p>	<p>Display the Start menu by pressing CTRL+ESC (or the Windows logo key .</p> <ul style="list-style-type: none"> Press R. Type magnify. Press ENTER. <p>Note: A message box with a link to more information about Microsoft Magnifier may appear. To close the box, press ENTER.</p>
2	<p>In the Magnifier Settings dialog box, under Tracking:</p> <ul style="list-style-type: none"> Select the tracking option you want. <p>Notes: To use Magnifier but hide the Magnifier Settings dialog box, select the</p>	<p>In the Magnifier Settings dialog box, under Tracking:</p> <ul style="list-style-type: none"> Select Follow mouse cursor by pressing ALT+M. Select Follow keyboard focus by pressing ALT+K. Select Follow text editing by

How to.....

Use WindowsXP Magnifier

<p>Minimize button.</p> <p>To turn off Magnifier, in the Magnifier Settings dialog box, select the Exit button.</p>	<p>pressing ALT+T.</p> <p>Notes: To use Magnifier but hide the Magnifier Settings dialog box, select Minimize by pressing ALT+SPACEBAR, N.</p> <p>To turn off Magnifier, in the Magnifier Settings dialog box, press ALT+X.</p>
--	---



Magnifier: Magnifier Settings: Tracking