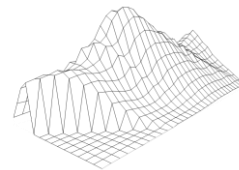


Post-2020 Census Redistricting: Public Forum

HARTNELL COLLEGE

OCTOBER 27, 2021



Shelley Lapkoff, Ph.D. & Jeanne Gobalet, Ph.D.
LAPKOFF & GOBALET DEMOGRAPHIC RESEARCH, INC.

www.demographers.com

Oakland and Saratoga, California

About Lapkoff & Gobalet Demographic Research, Inc.

1990: Hartnell was our first districting client – we helped the District transition from electing trustees at-large to by-district.

Since 1990, we have helped most Monterey County jurisdictions district and redistrict.

We provided demographic services to redistrict Hartnell in 1991, 2001, and 2011.

LGDR is currently providing redistricting services to most of the governmental agencies in Monterey County.

Agenda

- **What is redistricting?**
- **Why current trustee area boundaries do not need to change**
- **Description of Hartnell's current trustee area boundaries**
- **Next steps**

What is Redistricting?

- Every 10 years, school districts that elect boards by Trustee Area must redistrict (adjust Trustee Area boundaries to have equal total populations)
- Federal and state laws apply
- Each district's Board must adopt new Trustee Area boundaries before March 1, 2022
- New Trustee Areas will be used until after Census 2030
- Current Trustees complete their terms of office even if they no longer live in the Trustee Area they were elected to represent

Legal guidelines that demographers follow:

- ✓ **Federal law:**
 - Population equality
 - Voting Rights Act
 - No racial gerrymandering

- ✓ **State Education Code**



#1 Redistricting Priority: Population Equality

Trustee areas need to be nearly equal in 2020 population (some leeway is permitted)

Ideal district population = $1/7$ of the 2020 Census population

Hartnell total 2020 population (=285,394 total population; $1/7=$ 40,771 is ideal district size

Plan deviation = Difference between the least and most populous districts, divided by the ideal trustee size

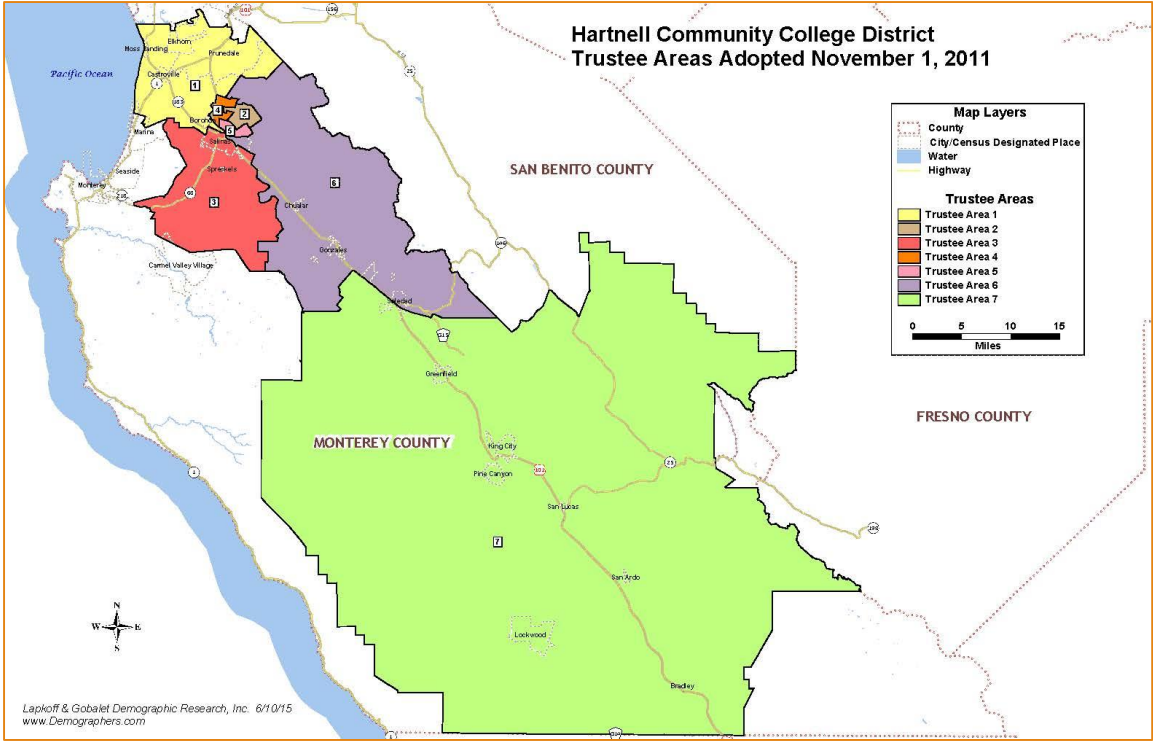
10% deviation is permitted = 4,077 persons (40,771 x 10%)

Current Trustee Area populations are balanced & could be used until 2030

Hartnell Current Plan - Population Balance

District	2020 Population	Deviation	% Deviation
1	41,892	1,121	2.8%
2	39,530	-1,241	-3.0%
3	41,670	899	2.2%
4	41,209	438	1.1%
5	40,686	-85	-0.2%
6	40,058	-713	-1.7%
7	40,349	-422	-1.0%
Total	285,394		
Plan Deviation:		2,362	5.8%
Ideal Population:		40,771	

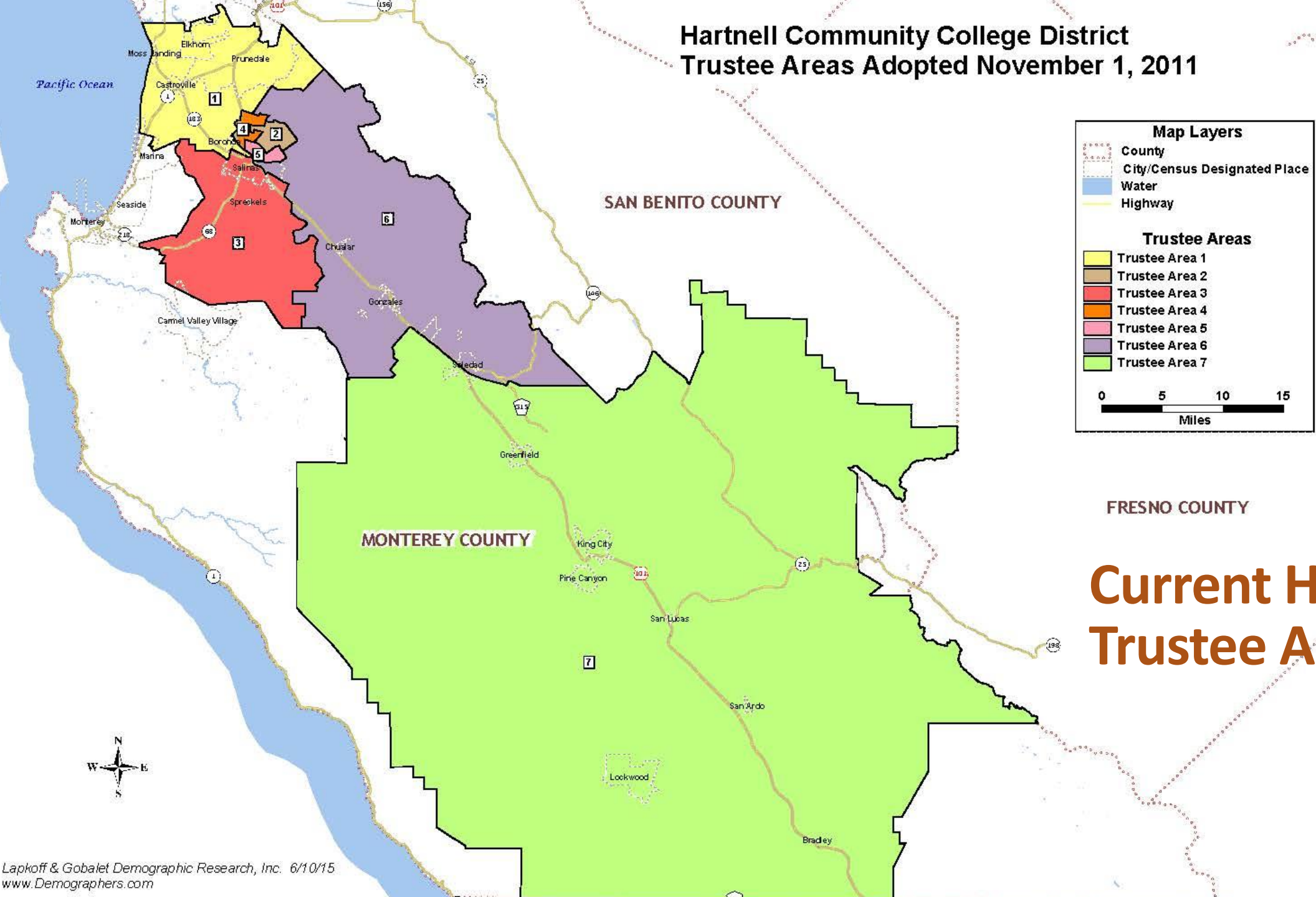
Using official redistricting data (US Census data adjusted by Statewide Database)



Description of Current Trustee Areas

- **Recommended by Hartnell's Advisory Committee that met after the 2010 Census data was available and adopted by the Board of Trustees**
- **Most of the current trustee area boundaries follow school district boundaries, cities, or major streets**

Hartnell Community College District
Trustee Areas Adopted November 1, 2011



Current Hartnell
Trustee Areas

Hartnell Community College District

Trustee Areas (Salinas detail)

Adopted November 1, 2011

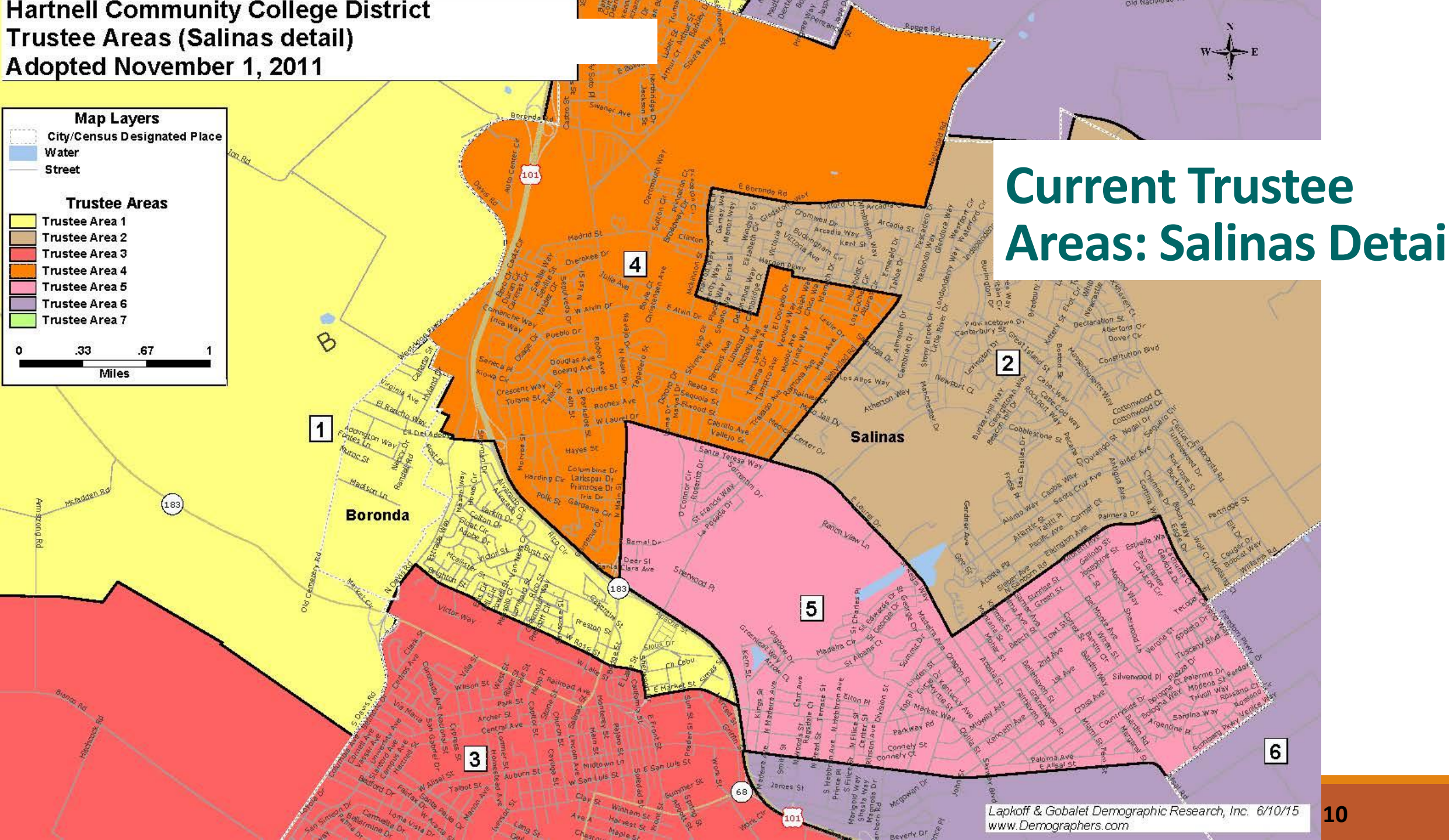
Map Layers

- City/Census Designated Place
- Water
- Street

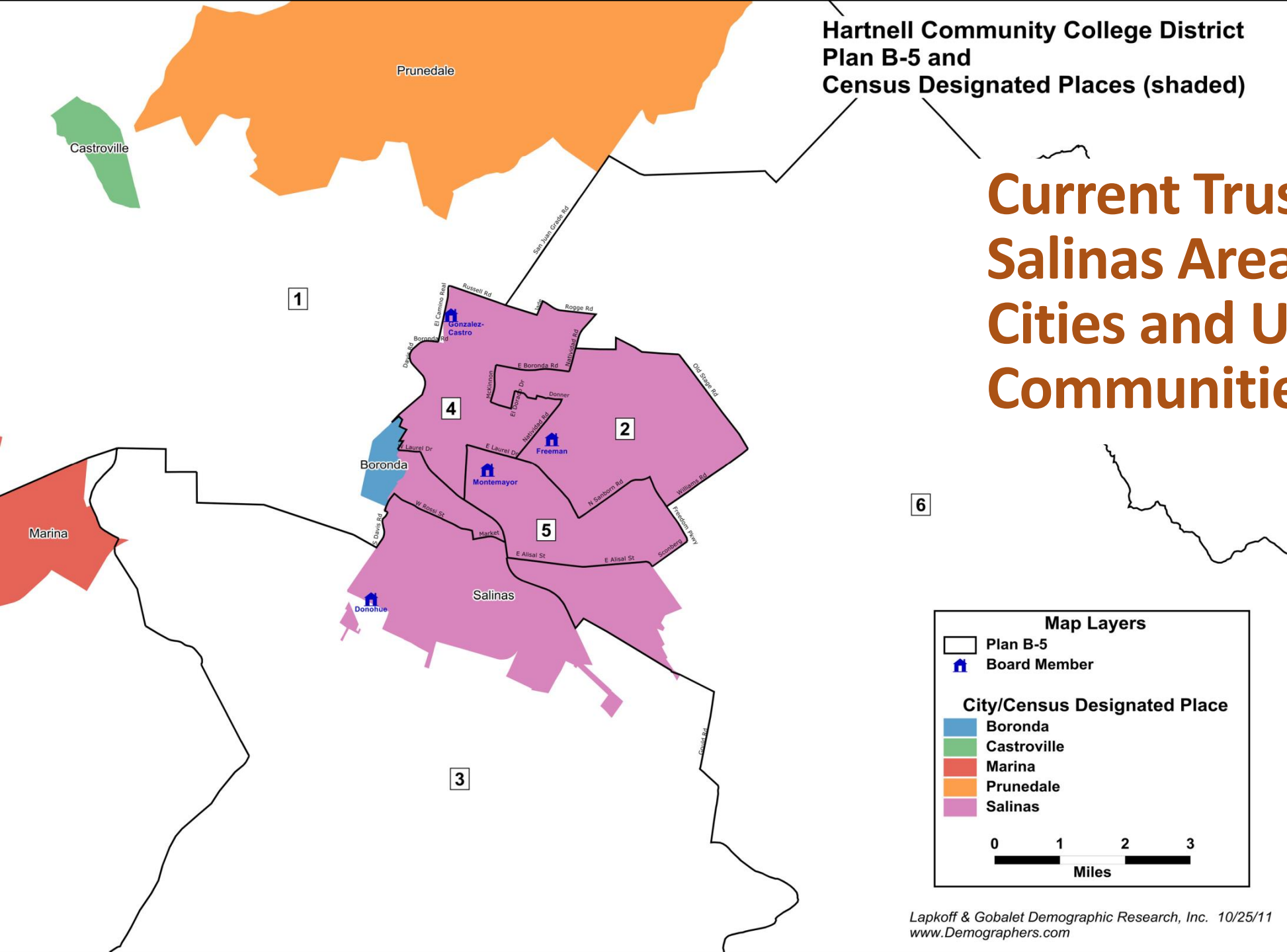
Trustee Areas

- Trustee Area 1
- Trustee Area 2
- Trustee Area 3
- Trustee Area 4
- Trustee Area 5
- Trustee Area 6
- Trustee Area 7

0 .33 .67 1
Miles

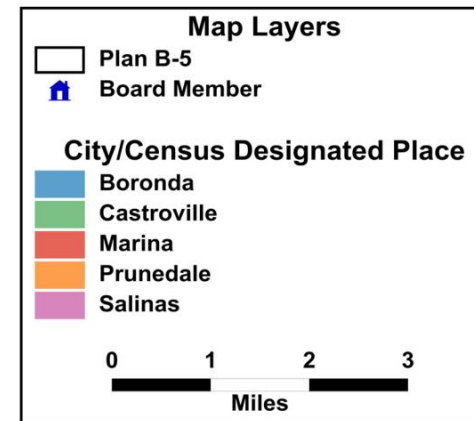


**Many current Hartnell Trustee Area boundaries
follow city boundaries or elementary school
district boundaries**

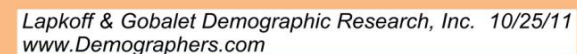


Current Trustee Areas: Salinas Area Detail with Cities and Unincorporated Communities

6



Current Trustee Areas: Salinas Area Detail with K-12 School Districts



Hartnell's Current Trustee Areas

Non-Hispanic

District	Total Population	Latinx/ Hispanic	White	Black	Asian	Other	Total
Total Population Percentages							
1	41,892	66%	25%	1%	5%	3%	100%
2	39,530	81%	8%	1%	9%	2%	100%
3	41,671	45%	42%	2%	7%	3%	100%
4	41,209	80%	10%	2%	6%	2%	100%
5	40,686	93%	3%	1%	2%	1%	100%
6	40,058	89%	7%	1%	2%	1%	100%
7	40,349	85%	11%	1%	2%	2%	100%
Total	285,395	77%	15%	1%	5%	2%	100%

Age 18+ (Voting Age) Population Percentages

1	31,305	60%	29%	1%	6%	3%	100%
2	27,904	77%	10%	2%	10%	2%	100%
3	32,159	40%	47%	2%	8%	3%	100%
4	29,191	76%	13%	2%	8%	2%	100%
5	27,594	92%	4%	1%	3%	1%	100%
6	27,758	87%	9%	1%	3%	1%	100%
7	27,257	81%	14%	1%	2%	2%	100%
Total	203,168	72%	19%	1%	6%	2%	100%

Citizens of Voting Age (CVAP) Percentages

1	23,607	44%	42%	2%	6%	6%	100%
2	16,547	64%	16%	3%	13%	4%	100%
3	26,071	30%	57%	1%	7%	4%	100%
4	19,334	59%	24%	3%	9%	5%	100%
5	9,883	82%	10%	1%	2%	4%	100%
6	15,075	75%	17%	1%	2%	5%	100%
7	16,117	56%	32%	2%	2%	8%	100%
Total	126,634	54%	32%	2%	6%	5%	100%

Hartnell's Current Trustee Areas

Non-Hispanic

District	Total Population	Latinx/ Hispanic	White	Black	Asian	Other
Registered Voters						
1	21,404	48%	n/a	n/a	4%	n/a
2	16,733	69%	n/a	n/a	8%	n/a
3	25,446	29%	n/a	n/a	5%	n/a
4	15,757	65%	n/a	n/a	5%	n/a
5	12,445	84%	n/a	n/a	3%	n/a
6	15,945	78%	n/a	n/a	3%	n/a
7	13,491	67%	n/a	n/a	2%	n/a
Total	121,221	59%	n/a	n/a	5%	n/a

Actual Voters

1	16,475	44%	n/a	n/a	4%	n/a
2	12,227	67%	n/a	n/a	8%	n/a
3	21,230	26%	n/a	n/a	5%	n/a
4	11,049	62%	n/a	n/a	5%	n/a
5	8,156	83%	n/a	n/a	3%	n/a
6	11,164	75%	n/a	n/a	3%	n/a
7	9,596	62%	n/a	n/a	2%	n/a
Total	89,897	55%	n/a	n/a	5%	n/a

District	Total Pop	Deviation	% Deviation
1	41,892	1,121	2.8%
2	39,530	-1,241	-3.0%
3	41,671	900	2.2%
4	41,209	438	1.1%
5	40,686	-85	-0.2%
6	40,058	-713	-1.7%
7	40,349	-422	-1.0%
Total	285,395		
Ideal	40,771	2,362	5.8%

Next Steps:

- 1. We will present our findings to the Board of Trustees at their November 2 Board meeting**
- 2. Board of Trustees may continue to use these trustee areas until the next Census**
- 3. After the 2030 Census, the trustee areas will need to be evaluated**
- 4. The Registrar of Voters may want to make technical adjustments to make the plan easier to implement**

Questions?
