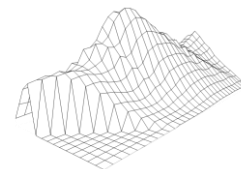


# Post-2020 Census Redistricting: Demographers' Findings

---

**HARTNELL COLLEGE**

**NOVEMBER 2, 2021**



Shelley Lapkoff, Ph.D. & Jeanne Gobalet, Ph.D.  
LAPKOFF & GOBALET DEMOGRAPHIC RESEARCH, INC.

[www.demographers.com](http://www.demographers.com)

Oakland and Saratoga, California

# About Lapkoff & Gobalet Demographic Research, Inc.

**1990: Hartnell was our first districting client – we helped the District change from electing trustees at-large to by-district.**

**Since 1990, we have helped most Monterey County jurisdictions district and redistrict.**

**We provided demographic redistricting services to Hartnell in 1991, 2001, and 2011.**

**LGDR is currently providing redistricting services to most of the jurisdictions in Monterey County.**

# Agenda

- **What is redistricting?**
- **Why current trustee area boundaries do not need to change**
- **Description of Hartnell's current trustee area boundaries**
- **Next steps**

# What is Redistricting?

- Every 10 years, school districts that elect boards by Trustee Area (TA) must redistrict (adjust Trustee Area boundaries to have equal total populations using the most recent Census counts)
- Federal and state laws apply
- Each district's Board must adopt new Trustee Area boundaries before March 1, 2022
- New Trustee Areas will be used until after Census 2030
- Current Trustees complete their terms of office even if they no longer live in the Trustee Area they were elected to represent

# Legal guidelines that demographers follow:

- ✓ **Federal law:**
  - Population equality
  - Voting Rights Act
  - No racial gerrymandering
  
- ✓ **State Education Code**



# #1 Redistricting Priority: Population Equality

Trustee areas need to be nearly equal in 2020 population (some leeway is permitted)

**Ideal district population** =  $1/7$  of the 2020 Census population

Hartnell total 2020 population = 285,394;  $1/7 = 40,771$  is ideal trustee area population

**Plan deviation** = Difference between the least and most populous districts, divided by the ideal trustee population

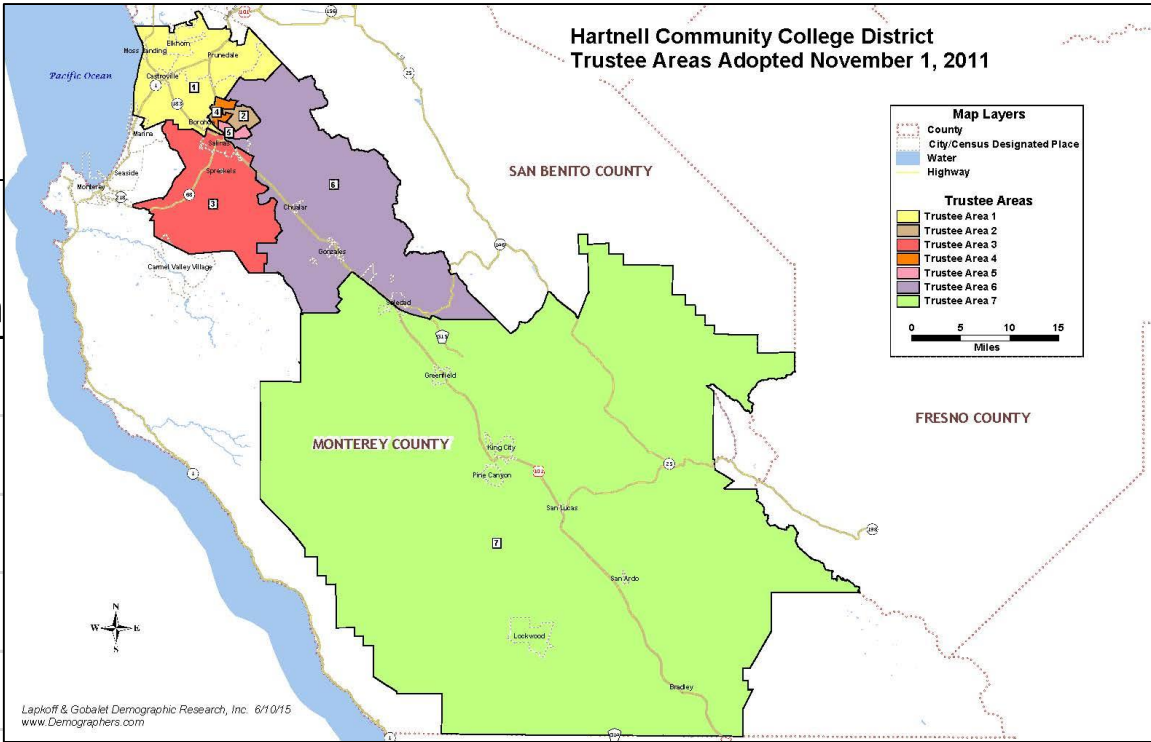
**10%** deviation is permitted = 4,077 persons ( $40,771 \times 10\%$ )

# Current Trustee Area populations are balanced (deviation is less than 10%) & could be used until 2030

## Hartnell Current Plan - Population Balance

District	2020 Population	Deviation	% Deviation
1	41,892	1,121	2.8%
2	39,530	-1,241	-3.0%
3	41,670	899	2.2%
4	41,209	438	1.1%
5	40,686	-85	-0.2%
6	40,058	-713	-1.7%
7	40,349	-422	-1.0%
Total	285,394		
Plan Deviation:		2,362	5.8%
Ideal Population:		40,771	

Using official redistricting data (US Census data adjusted by Statewide Database)

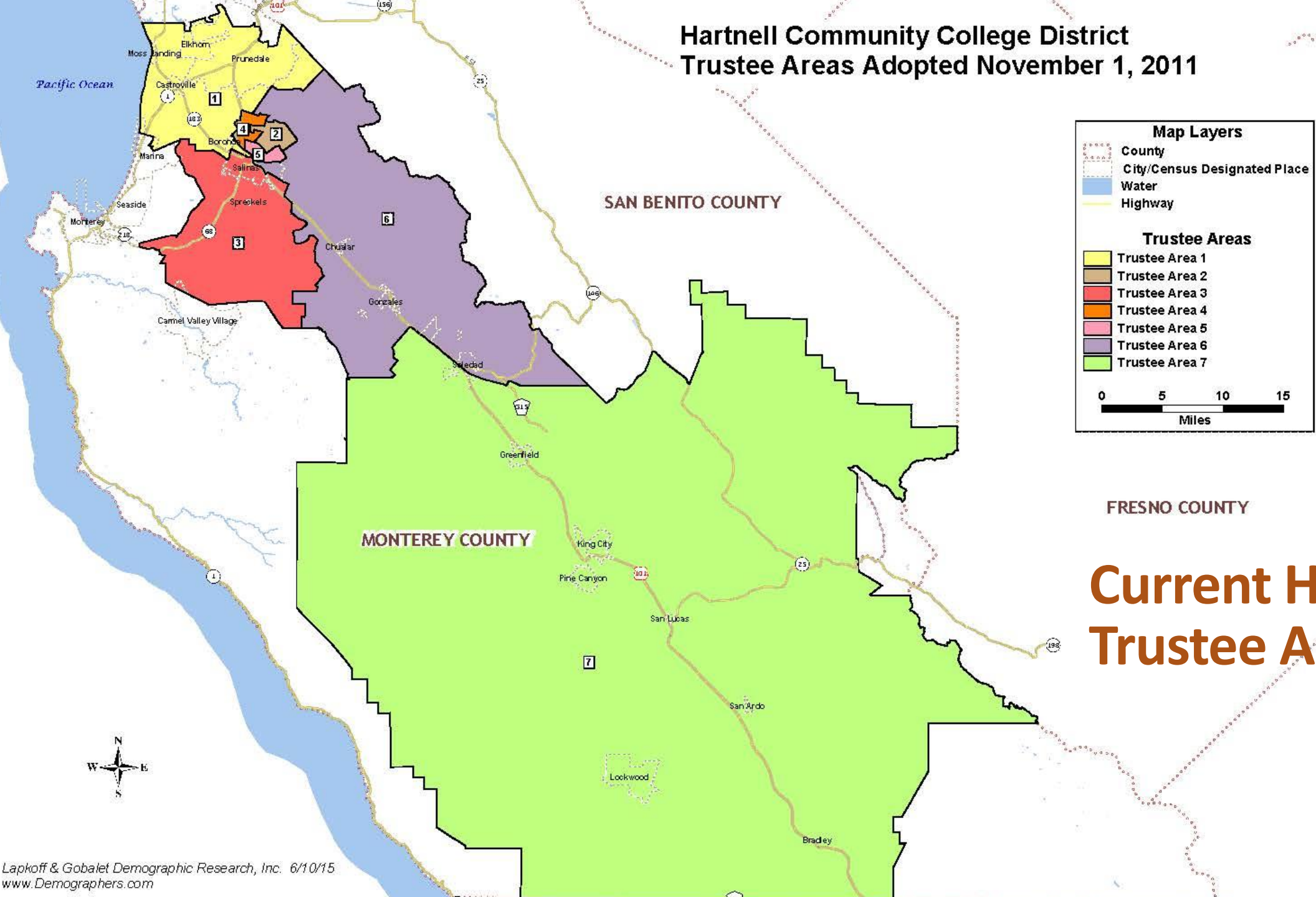


## Description of Current Trustee Areas

- Districting plan was recommended by Hartnell's 2011-12 Redistricting Advisory Committee based on Census 2010 counts and adopted by the Board of Trustees
- Most of the current trustee area boundaries follow K-12 school district boundaries, city limits, or major streets



Hartnell Community College District  
Trustee Areas Adopted November 1, 2011



Current Hartnell  
Trustee Areas

Hartnell Community College District  
Trustee Areas (Salinas detail)  
Adopted November 1, 2011

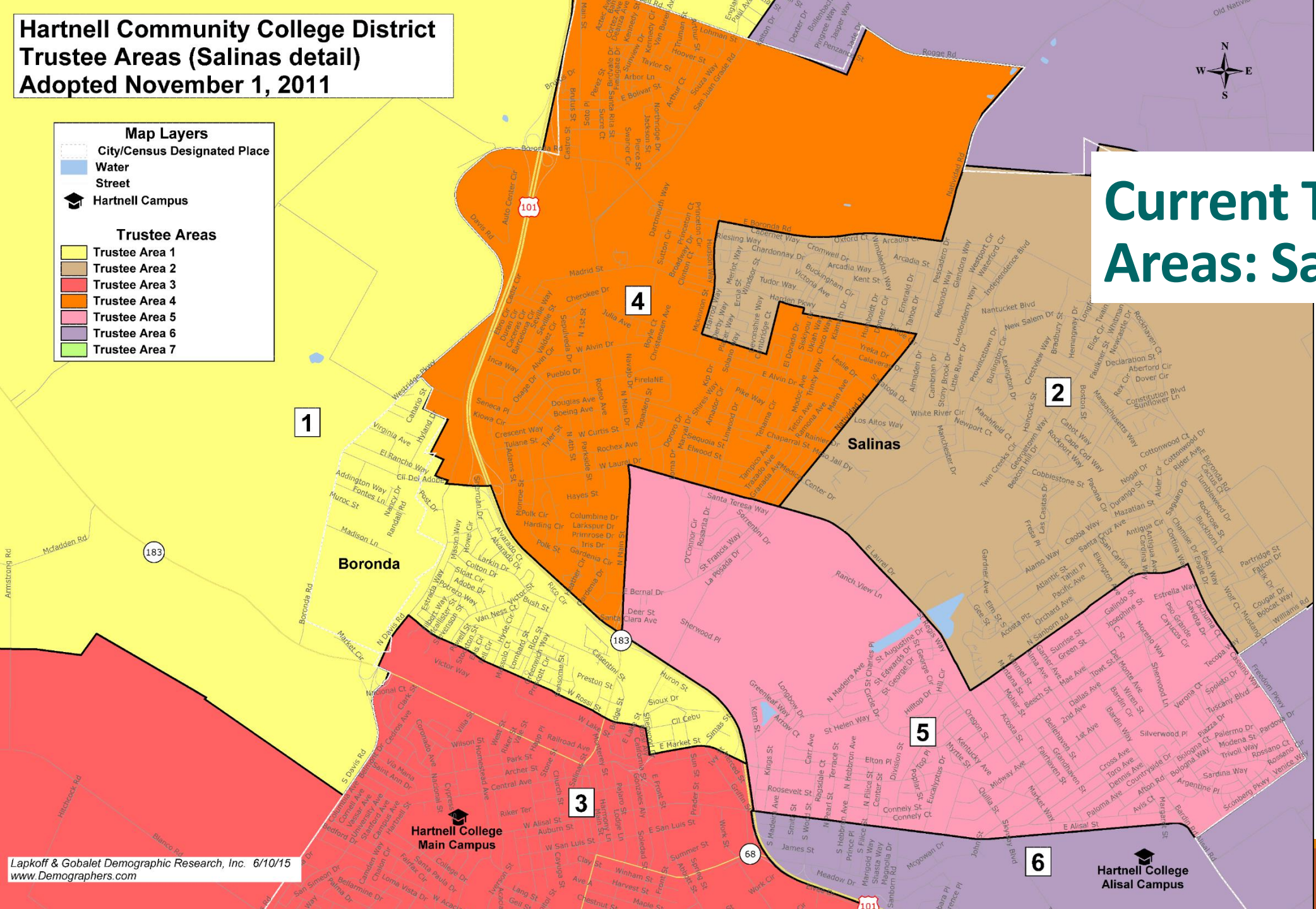
**Map Layers**

- City/Census Designated Place
- Water
- Street
- Hartnell Campus

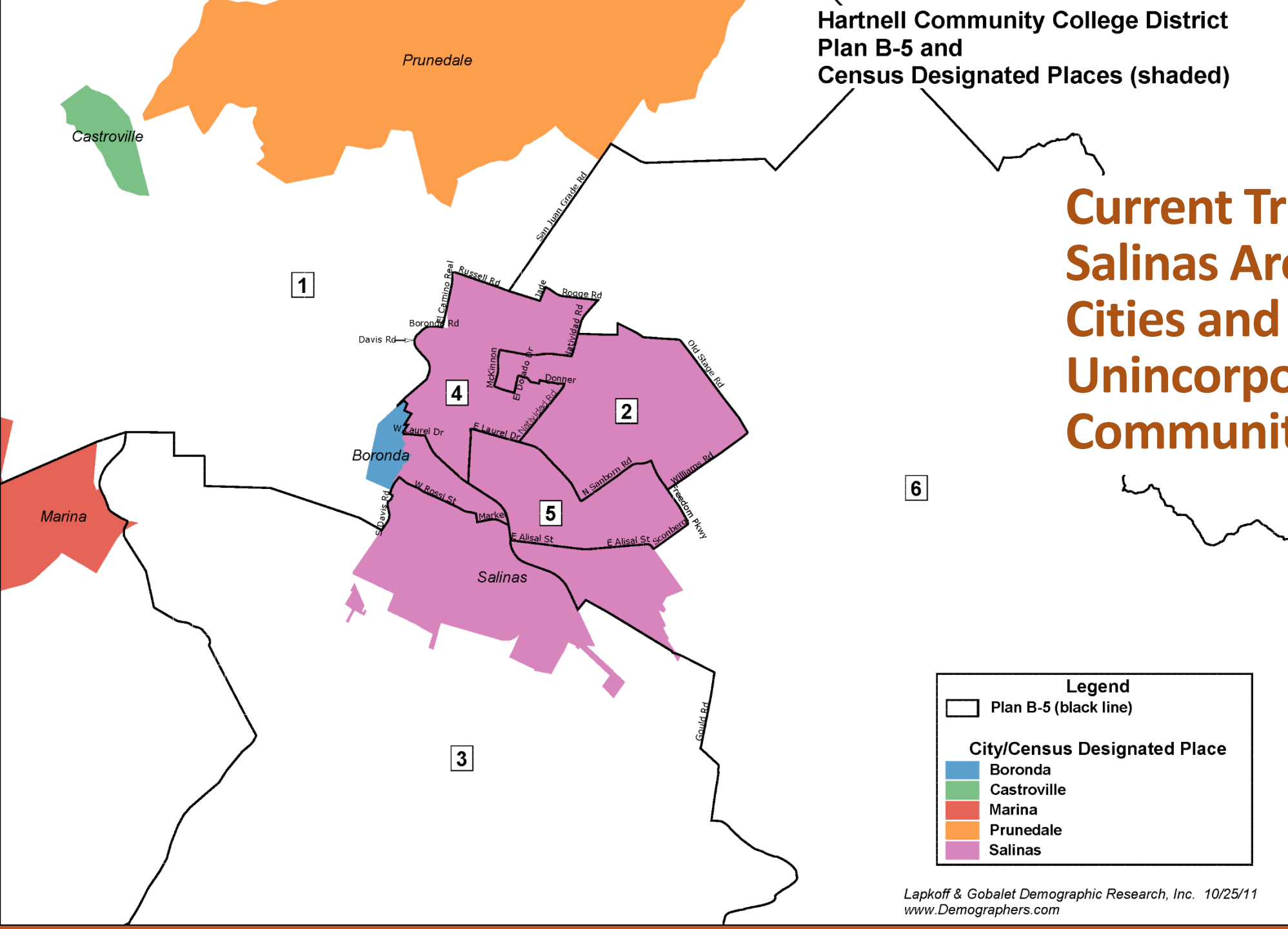
**Trustee Areas**

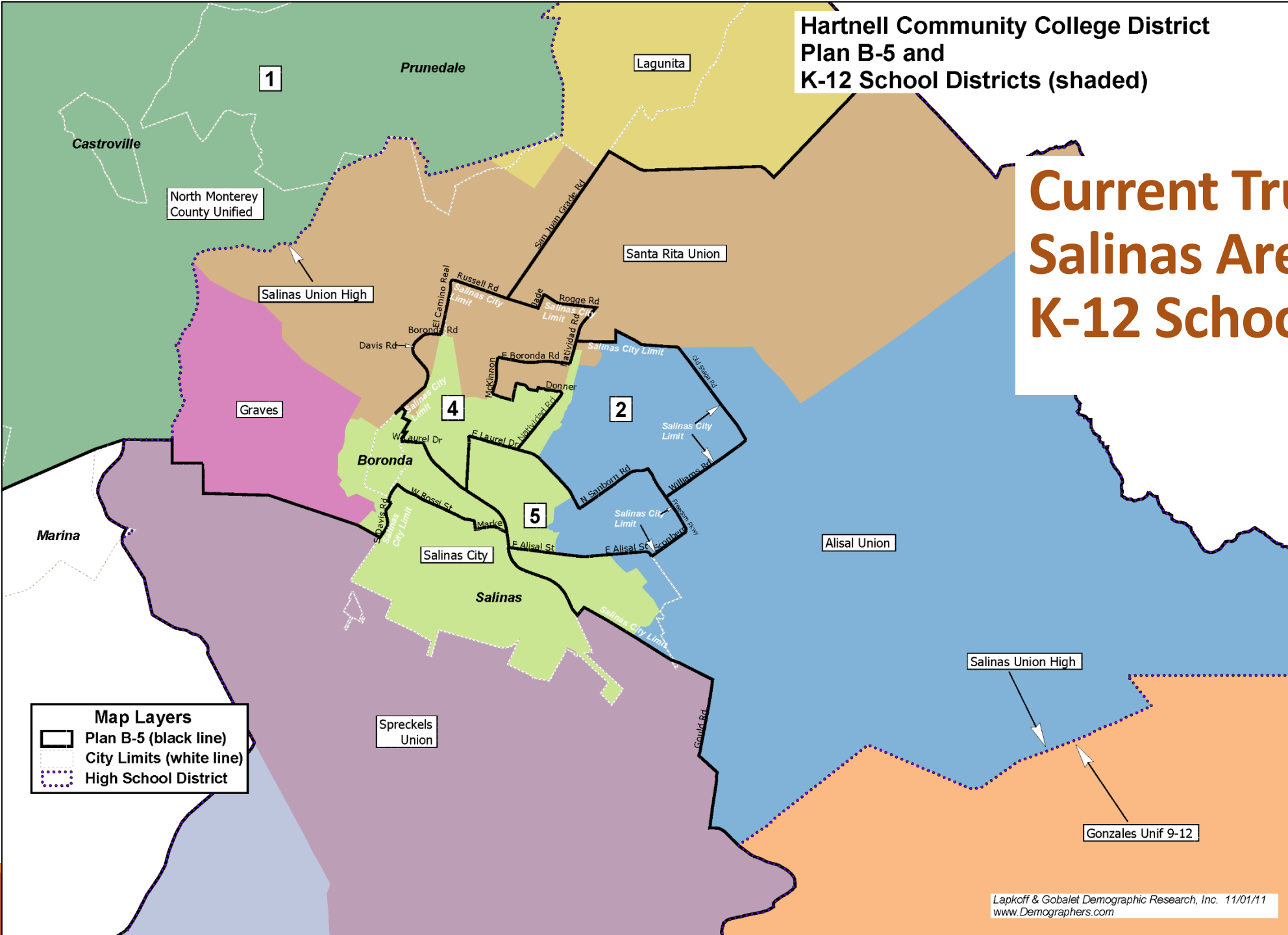
- Trustee Area 1
- Trustee Area 2
- Trustee Area 3
- Trustee Area 4
- Trustee Area 5
- Trustee Area 6
- Trustee Area 7

Current Trustee  
Areas: Salinas Detail









Hartnell's Current Trustee Areas								Hartnell's Current Trustee Areas						
Non-Hispanic								Non-Hispanic						
District	Total Population	Latinx/ Hispanic	White	Black	Asian	Other	Total	District	Total Population	Latinx/ Hispanic	White	Black	Asian	Other
Total Population Percentages								Registered Voters						
1	41,892	66%	25%	1%	5%	3%	100%	1	21,404	48%	n/a	n/a	4%	n/a
2	39,530	81%	8%	1%	9%	2%	100%	2	16,733	69%	n/a	n/a	8%	n/a
3	41,671	45%	42%	2%	7%	3%	100%	3	25,446	29%	n/a	n/a	5%	n/a
4	41,209	80%	10%	2%	6%	2%	100%	4	15,757	65%	n/a	n/a	5%	n/a
5	40,686	93%	3%	1%	2%	1%	100%	5	12,445	84%	n/a	n/a	3%	n/a
6	40,058	89%	7%	1%	2%	1%	100%	6	15,945	78%	n/a	n/a	3%	n/a
7	40,349	85%	11%	1%	2%	2%	100%	7	13,491	67%	n/a	n/a	2%	n/a
Total	285,395	77%	15%	1%	5%	2%	100%	Total	121,221	59%	n/a	n/a	5%	n/a
Age 18+ (Voting Age) Population Percentages								Actual Voters						
1	31,305	60%	29%	1%	6%	3%	100%	1	16,475	44%	n/a	n/a	4%	n/a
2	27,904	77%	10%	2%	10%	2%	100%	2	12,227	67%	n/a	n/a	8%	n/a
3	32,159	40%	47%	2%	8%	3%	100%	3	21,230	26%	n/a	n/a	5%	n/a
4	29,191	76%	13%	2%	8%	2%	100%	4	11,049	62%	n/a	n/a	5%	n/a
5	27,594	92%	4%	1%	3%	1%	100%	5	8,156	83%	n/a	n/a	3%	n/a
6	27,758	87%	9%	1%	3%	1%	100%	6	11,164	75%	n/a	n/a	3%	n/a
7	27,257	81%	14%	1%	2%	2%	100%	7	9,596	62%	n/a	n/a	2%	n/a
Total	203,168	72%	19%	1%	6%	2%	100%	Total	89,897	55%	n/a	n/a	5%	n/a
Citizens of Voting Age (CVAP) Percentages								District	Total Pop	Deviation	% Deviation			
1	23,607	44%	42%	2%	6%	6%	100%	1	41,892	1,121	2.8%			
2	16,547	64%	16%	3%	13%	4%	100%	2	39,530	-1,241	-3.0%			
3	26,071	30%	57%	1%	7%	4%	100%	3	41,671	900	2.2%			
4	19,334	59%	24%	3%	9%	5%	100%	4	41,209	438	1.1%			
5	9,883	82%	10%	1%	2%	4%	100%	5	40,686	-85	-0.2%			
6	15,075	75%	17%	1%	2%	5%	100%	6	40,058	-713	-1.7%			
7	16,117	56%	32%	2%	2%	8%	100%	7	40,349	-422	-1.0%			
Total	126,634	54%	32%	2%	6%	5%	100%	Total	285,395					
								Ideal	40,771	2,362	5.8%			

## Next Steps:

- 1. The Hartnell Board may continue to use these Trustee Areas for another 10 years**
- 2. After the 2030 Census, the Trustee Areas will need to be evaluated**
- 3. The Registrar of Voters may want to make technical adjustments involving very small populations to make the current plan easier to implement**

# Questions?

---