

Overview of Adult Education

Ana González
Director of Academic Affairs,
Continuing Education





What is Adult Education?

Is it all instruction and services for students over 18???

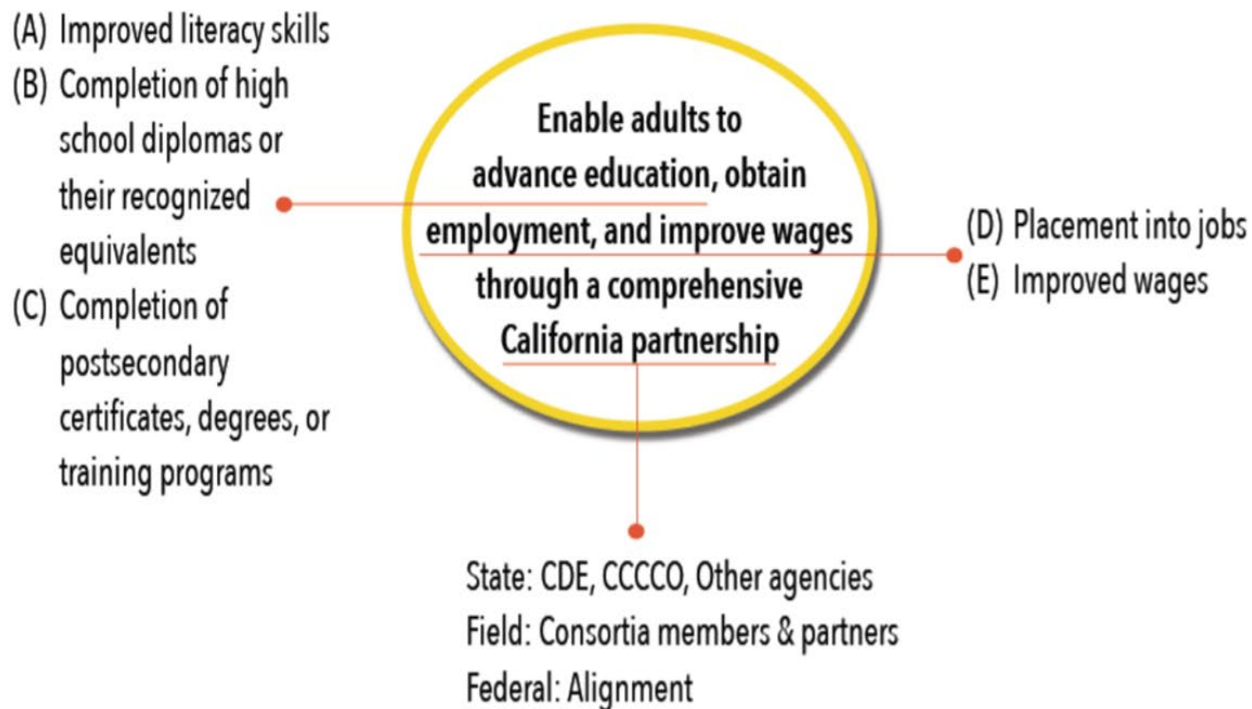
CAEP: (AB104 Legislation) 2016

- Joint effort between the California Department of Education and the California Community Colleges Chancellor's Office.

Website: caladulted.org



Big Picture: What is the end goal of AEBG?





What does that mean for community colleges?

What does that mean for Hartnell?



What can CAEP fund?

Adult Education includes all people receiving support services from AEBG consortium members or enrolled in K12 adult education or **noncredit community college coursework** in the program areas listed in AB104. (next slide)

For example:

Q47 One of our member colleges mixes their non-credit and credit students in the same class. If they spend some of their AEP funds, for example, on Chromebooks in this mixed credit/non-credit class, it's not a problem if the "credit" students use those Chromebooks, correct?

The consortium should ensure that the community college is using all other available resources before it uses AEP funds as these credit students are not being counted in the AEP enrollment and outcome numbers. You may make a case if these credit student were transitioning from an adult school or noncredit course – but to use AEP funds to purchase equipment for credit students that have no connection to AEP/adult education – would not be advisable.



10 Categories Are Eligible for State Funding

- **English as a Second Language***
- Immigrant Education/Citizenship
- **Elementary and Secondary Basic Skills***
- Health and Safety
- Substantial Disabilities
- Parenting Education
- Home Economics
- Courses for Older Adults
- **Short-term Vocational***
- **Workforce Preparation***

*Eligible for Enhanced Funding of \$5,457 per FTE when sequenced and lead to a certificate of completion, or certificate of competency.

Source: Program and Course Approval Handbook

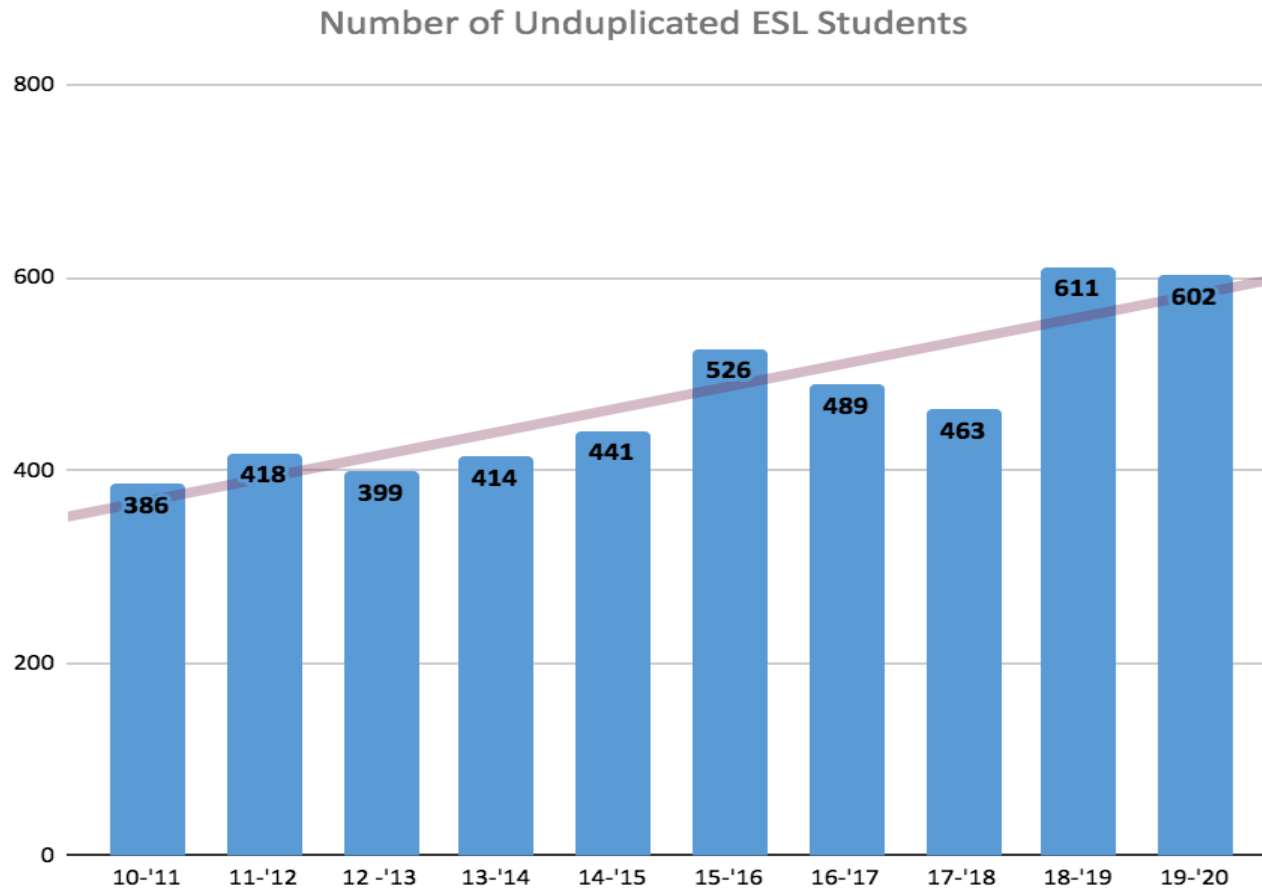


CDCP funding of \$5,457 per FTE

- 1 FTE = 525 hours
- Noncredit ESL Courses are 24 hours
- $525 \text{ hours} / 24 \text{ hours per noncredit course} = 21.9$ times for effort to earn 1 FTE



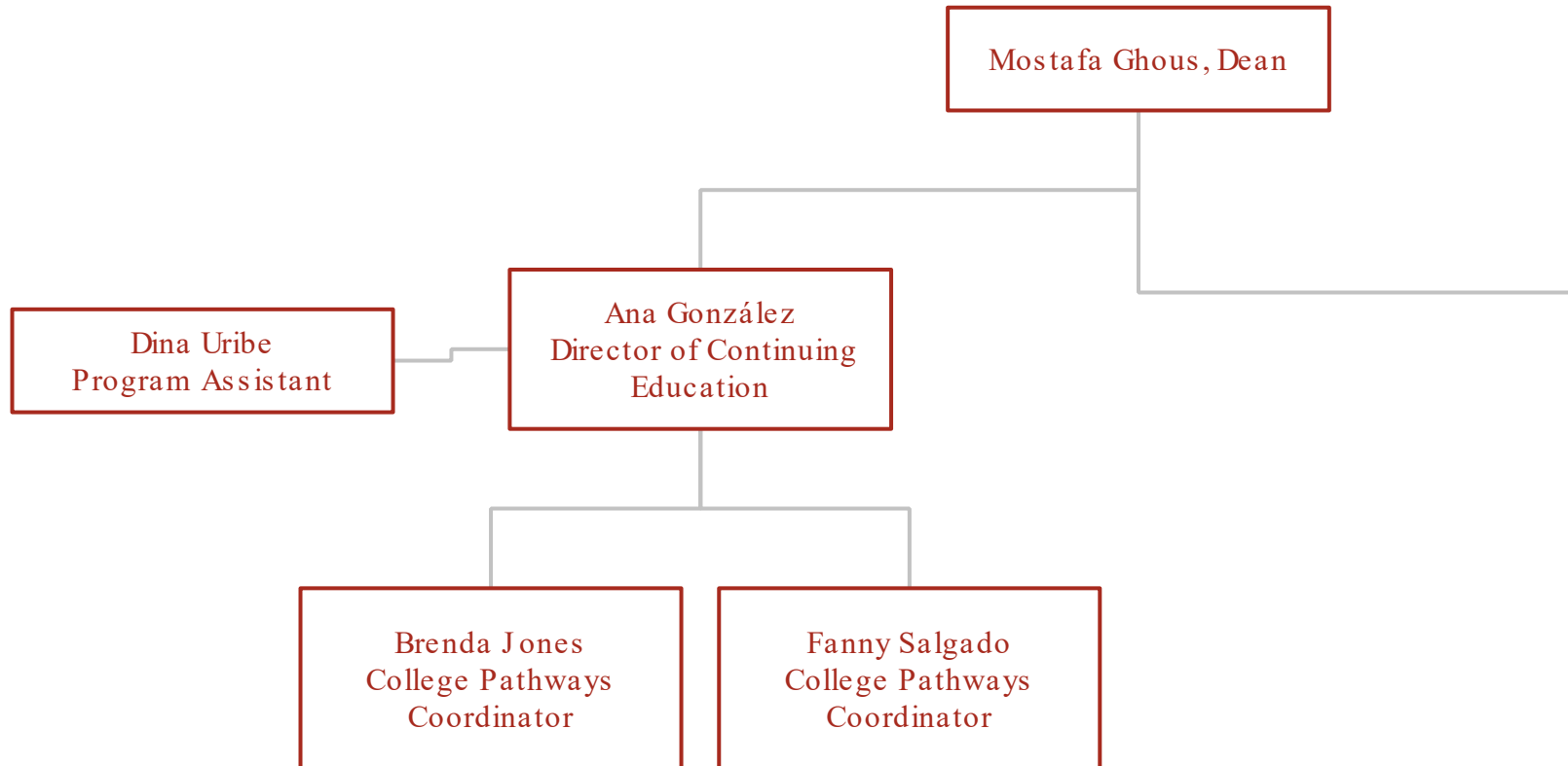
Enrollment Trends



Source: Dr. Ting, Office of Institutional Research



Continuing Education Team





Noncredit ESL

Students:

- **Student Perception** - Is college for me?
- **Limited Computer Skills** - paper application and registration

Hartnell:

- **Marketing** - increase community awareness
- **Systems Built for Traditional Students** - Office hours, computer based processes
- **Pathways** - clarify ESL pathway, need CTE options
- **Data Collection/Reporting** - Adult Ed., MIS, New Student Funding Formula

Current Projects:

- Updating Marketing (5-12 touch points needed)
- Matriculation Mondays/Lanzate Lunes
- Student Handbook
- Faculty Handbook
- Faculty support/professional development
- Supporting development of vocational and academic pathways that meet student needs
- Data Collection and Data Elements
- Advocacy for Nontraditional Students
 - College Redesign and Guided Pathways
 - Broadening concepts of Equity and Inclusion

