

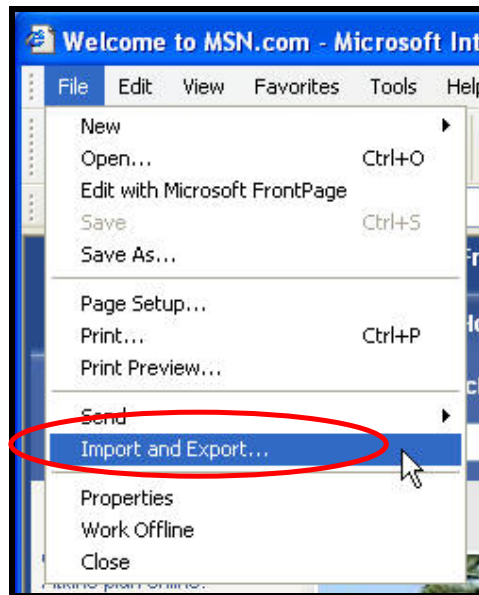
How To...

Export Your Favorites

Exporting Favorites using Microsoft Internet Explorer

Open Internet Explorer

Click File | Import and Export...



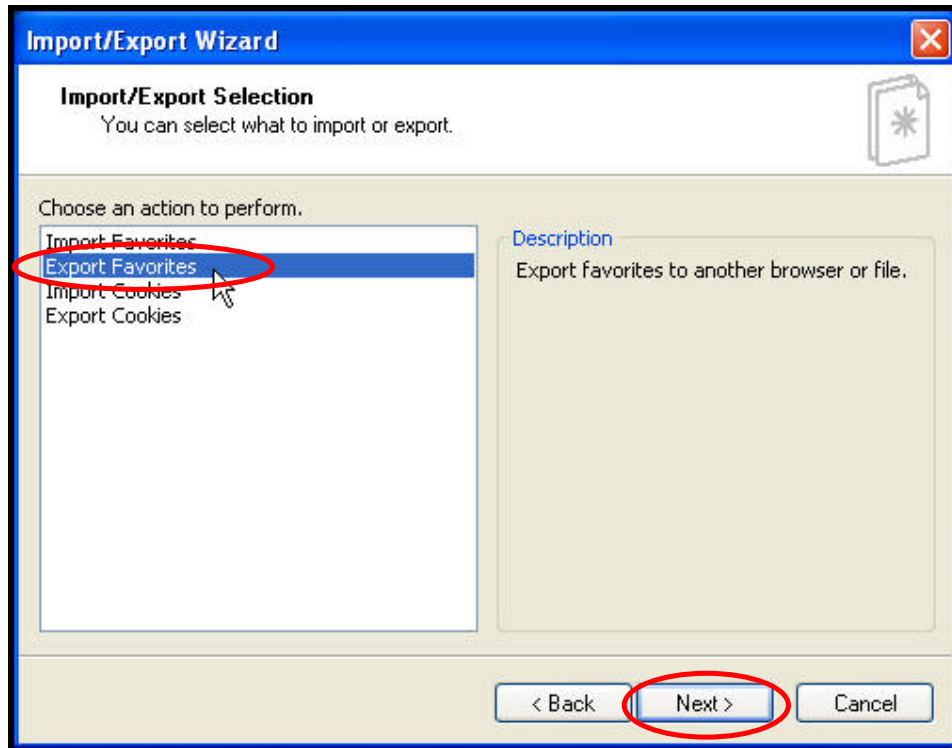
Click Next



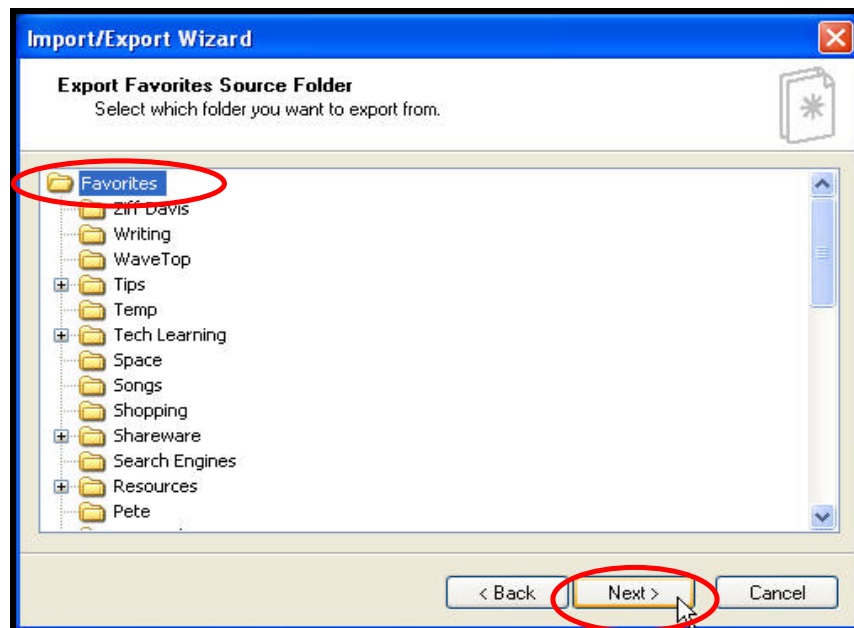
How To...

Export Your Favorites

Select Export Favorites and click Next



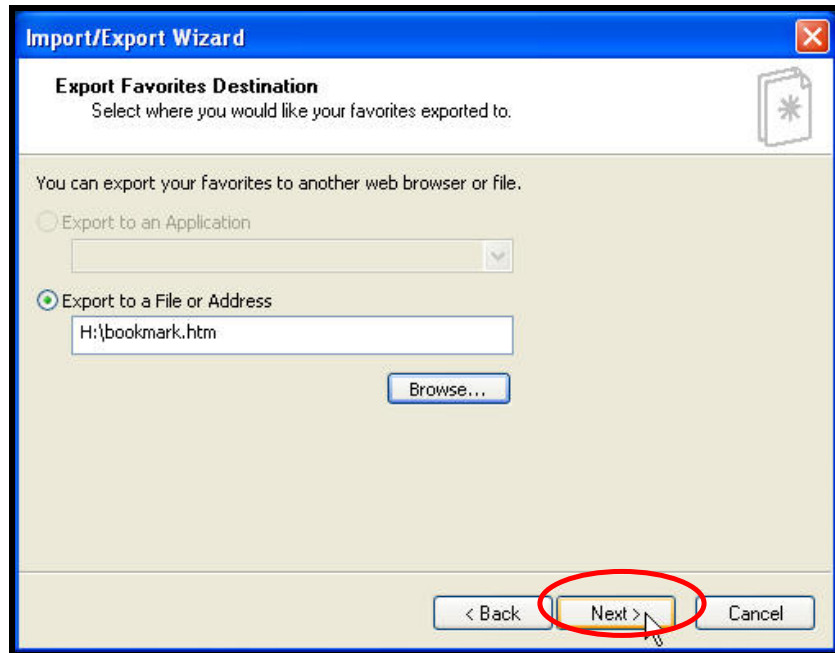
To select all your favorites just chose the Favorites folder, Click Next



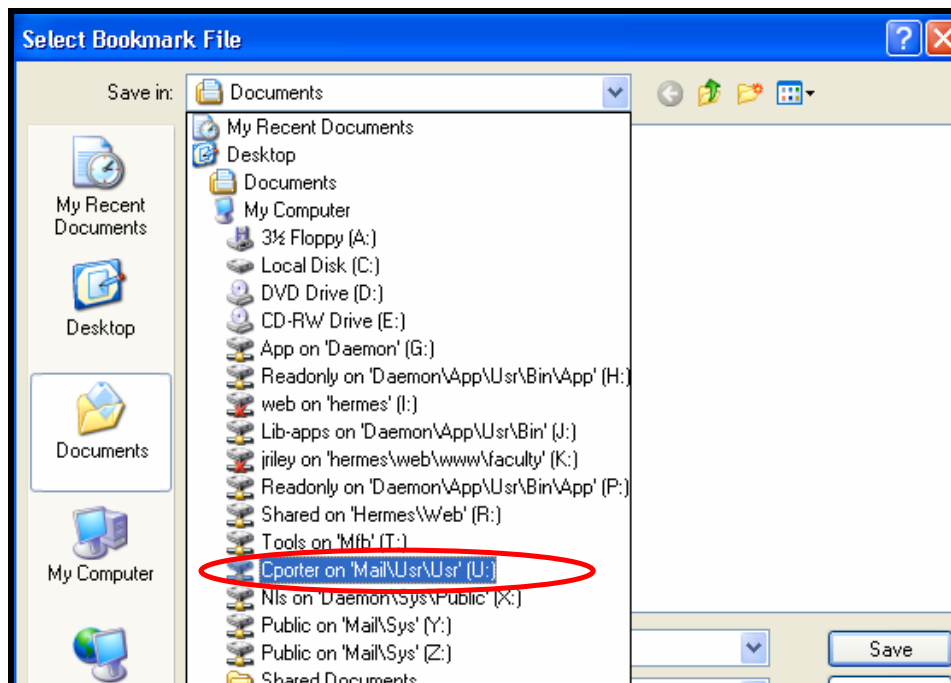
How To...

Export Your Favorites

Where it says "Export to"
Click on the Browse button



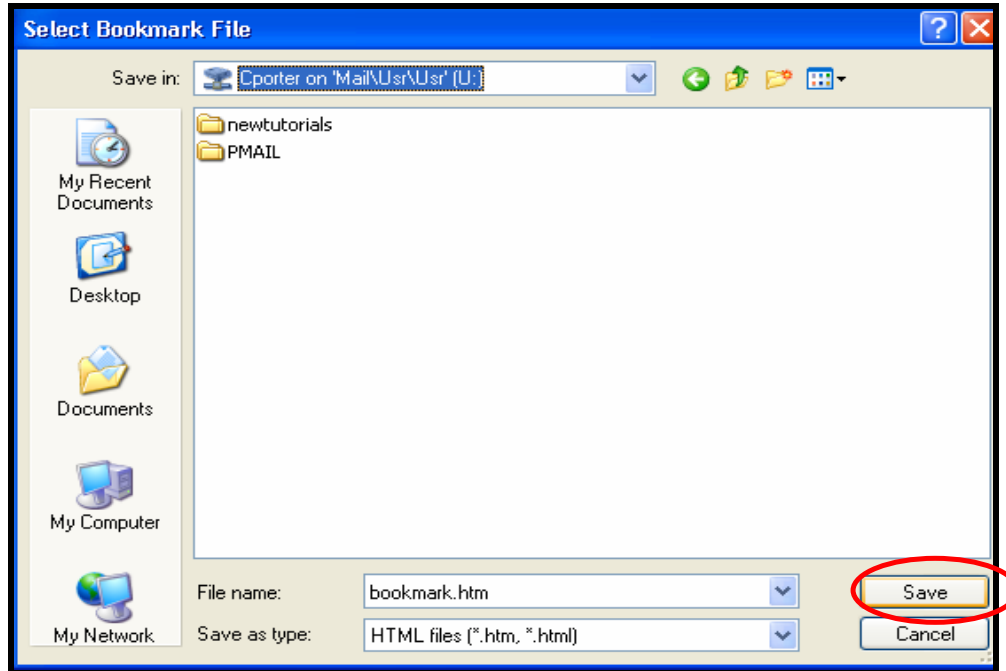
The select your network drive from the list. (*Note: for admin it is the "U" drive and for academic it is the "I" drive)



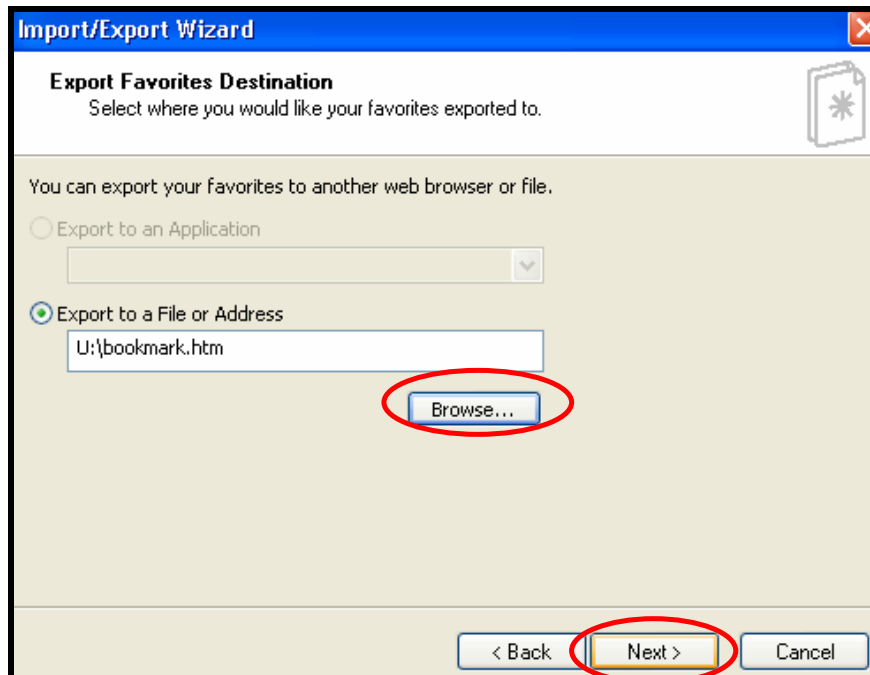
How To...

Export Your Favorites

Then chose save.



Then chose next.



Finally click Finish.