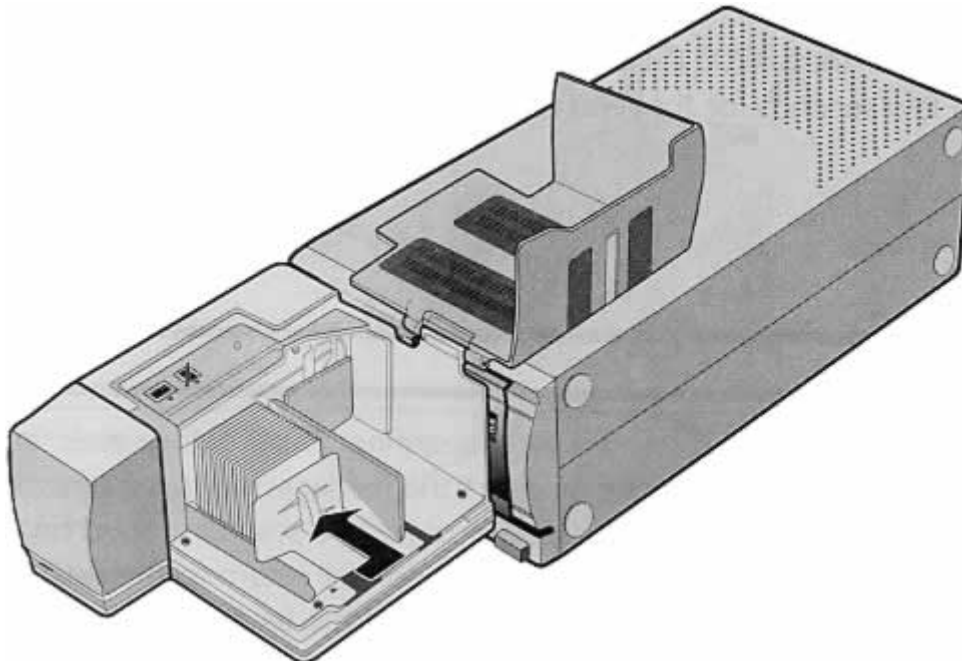
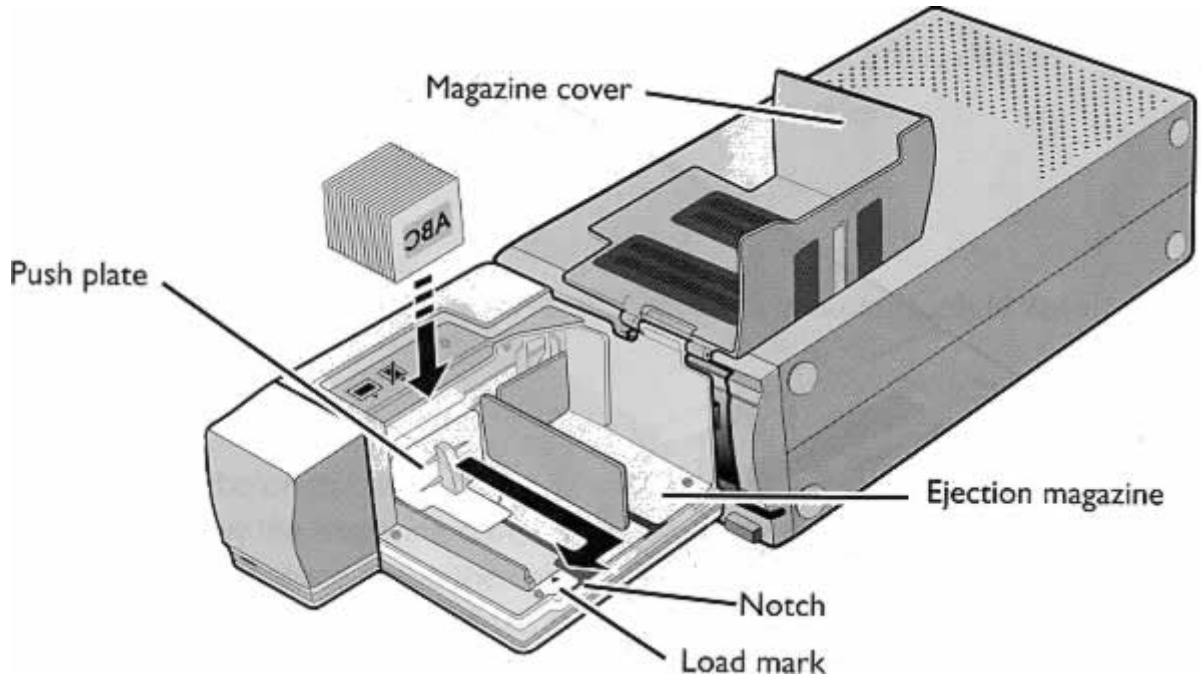


# How to use the NIKON COOLSCAN

---

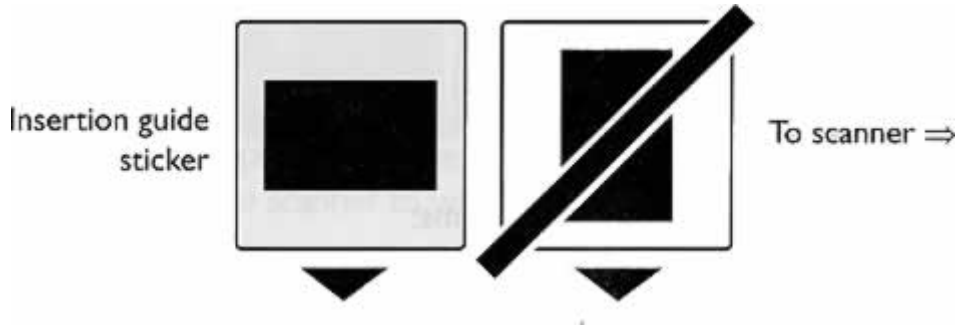
Put slides in. Do your best at placing the emulsion side of the slide to the outside of the loader. The emulsion side of a slide, when looked at by a keen observer, will have a very fine texture to it (as opposed to no texture). If you are unable to distinguish one side from the other than just use your best judgment. You can only notice the difference when you scan a slide at the highest resolution (4000 dpi).



# How to use the NIKON COOLSCAN

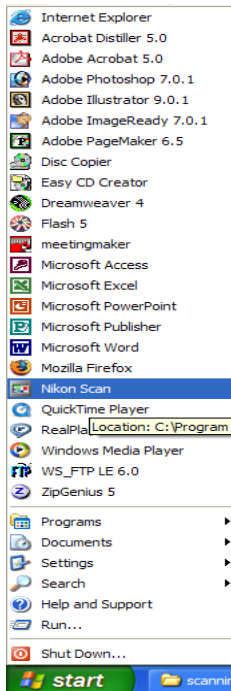
---

Make sure the slides are put in as landscape.



### 3. Open Nikon Scan

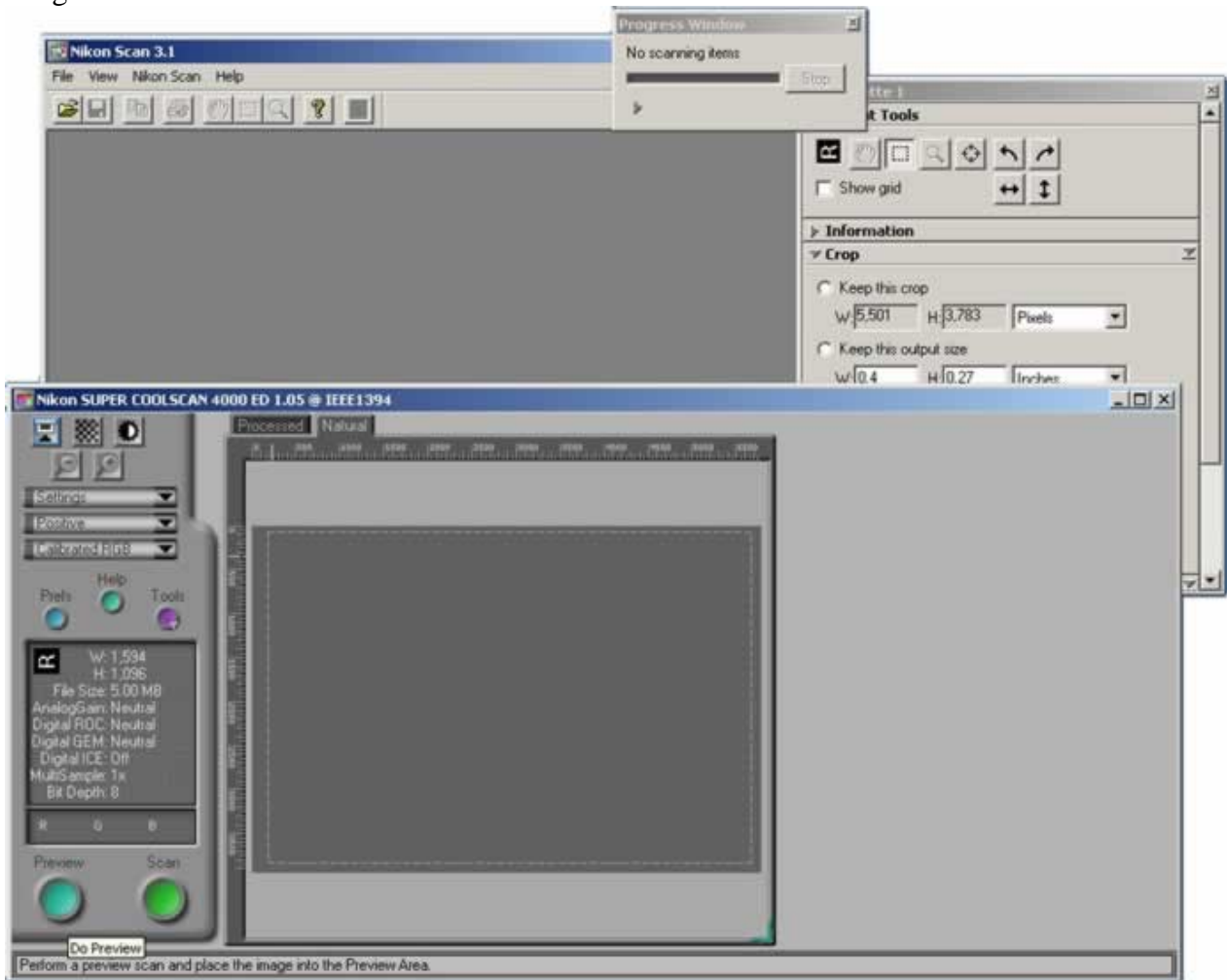
Go start and choose Nikon Scan



# How to use the NIKON COOLSCAN

---

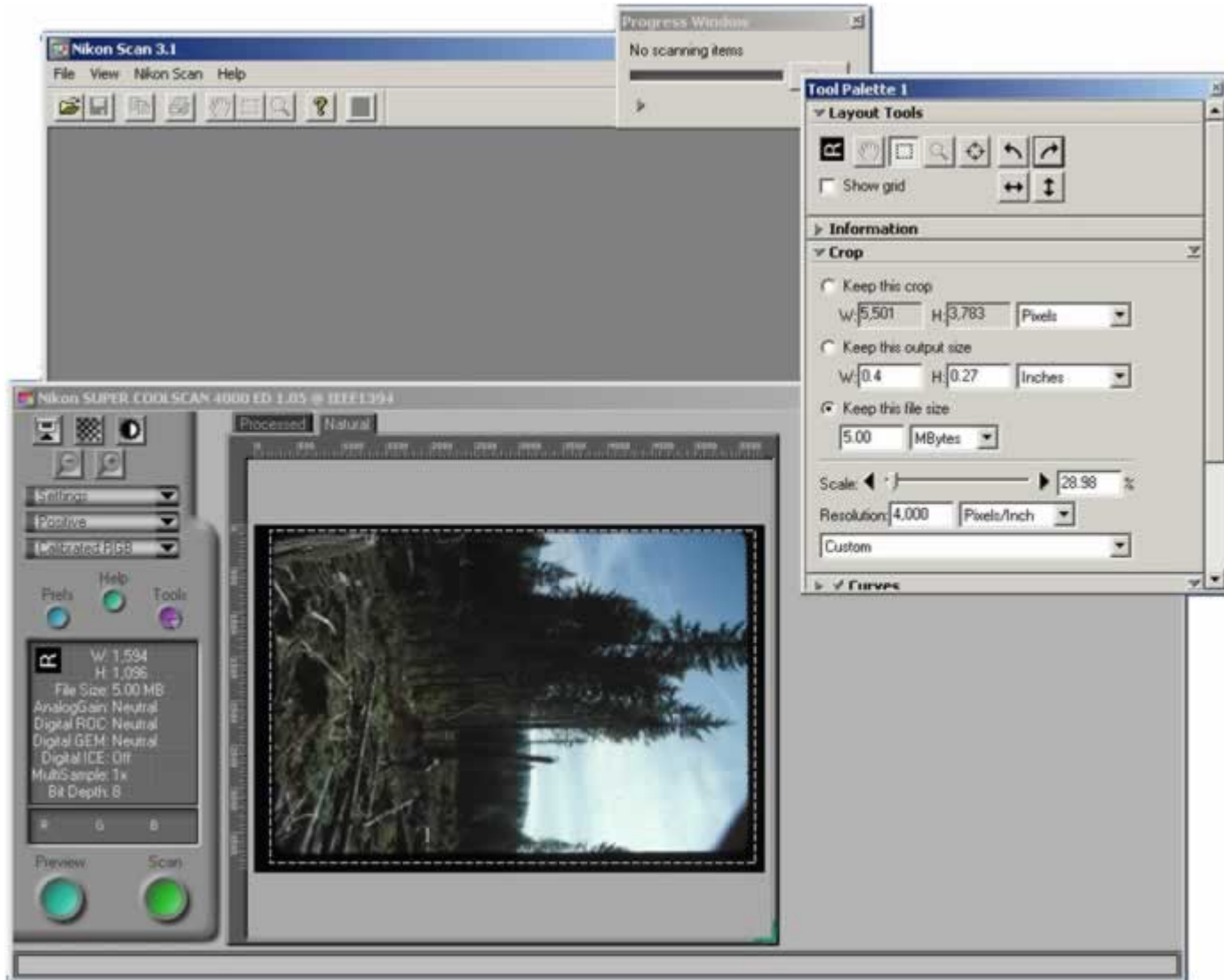
4. Click the Preview button to check the image.



If the preview image is not positioned correctly, go to Tool Palette 1 and click the triangle to the left of Layout Tools. Use the arrow keys to rotate the image to the desired position.

# How to use the NIKON COOLSCAN

---



5. When the preview image is set to your preference, go to the Tool Palette 1 and click the triangle to the left of Crop and set your Crop Options.

- In the Nikon SUPER COOL SCAN 4000 control panel, you may want to crop the photo image from the edges (some of the slide frame may have been scanned as part of the image). Cropping is done by dragging the mouse arrow over your image while holding the left mouse button. Everything inside the cropped square will be saved.
- In Tool Palette 1 you need to set the Resolution. Use the following table to set your resolution:

# How to use the NIKON COOLSCAN

---

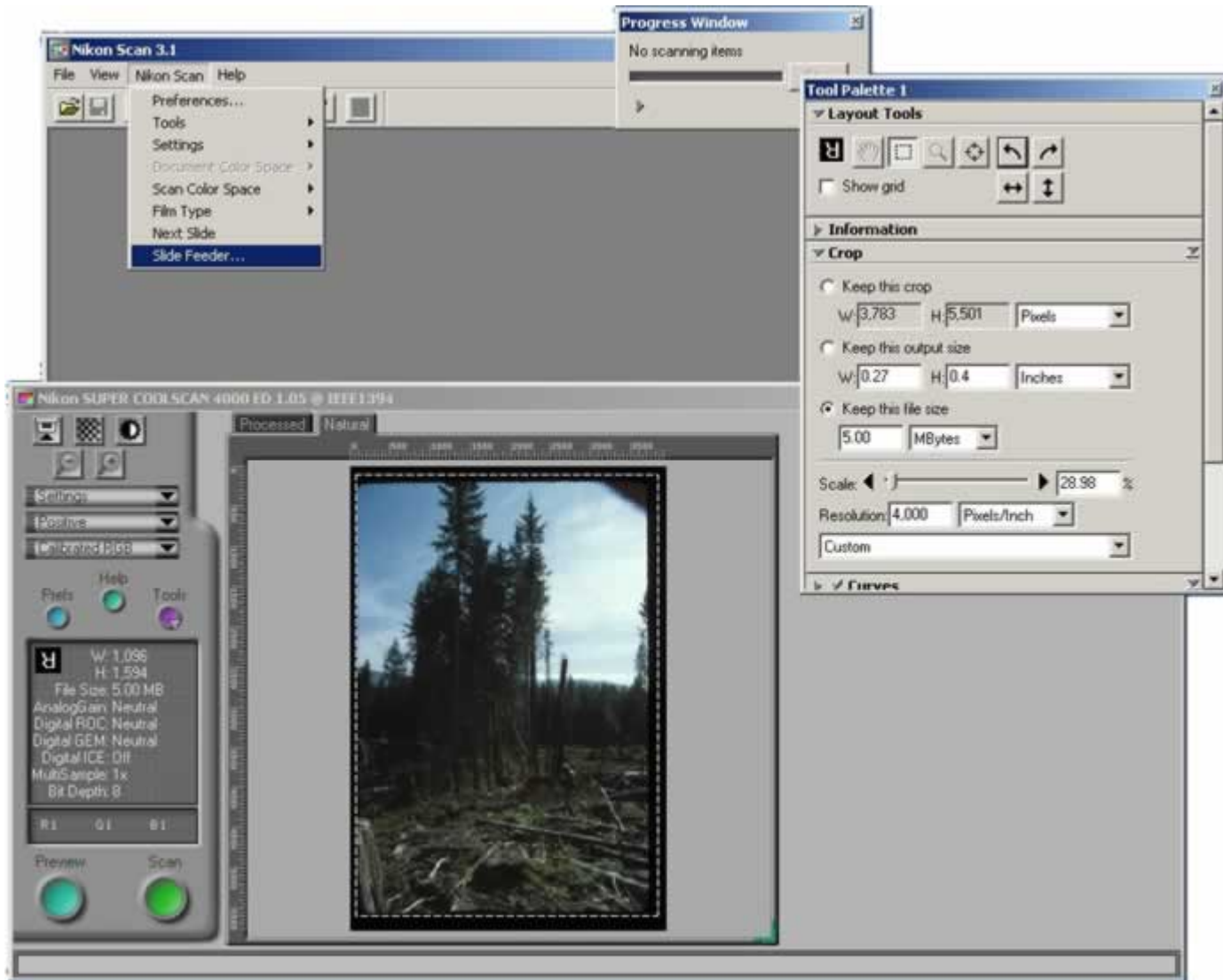
**Recommended Resolution Table**

Image Use	Pixels/Inch
Web Site	1000
Word Document	1000
Power Point Projection	1000
8 in by 11 in Printout	2000
Full Poster Printout	4000

6. Now go to Nikon Scan 3.1, click the Nikon Scan menu, scroll down to Slide Feeder..., and click it.

# How to use the NIKON COOLSCAN

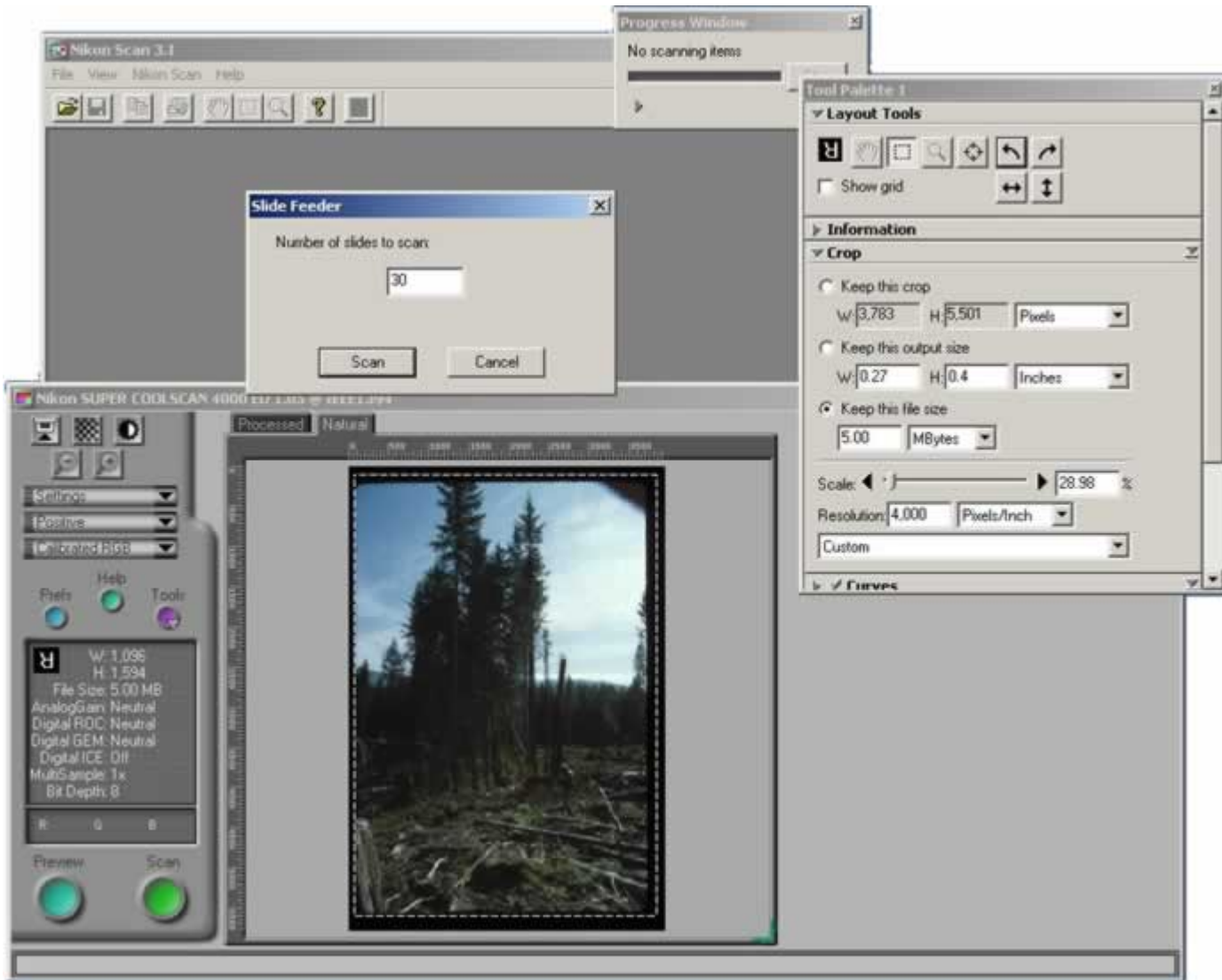
---



7. In the Slide Feeder dialog box, type in the number of slides to scan and click OK. (Hint: you do not need to count your slides. Enter the maximum number of 50 and it will scan until the feeder is empty).

# How to use the NIKON COOLSCAN

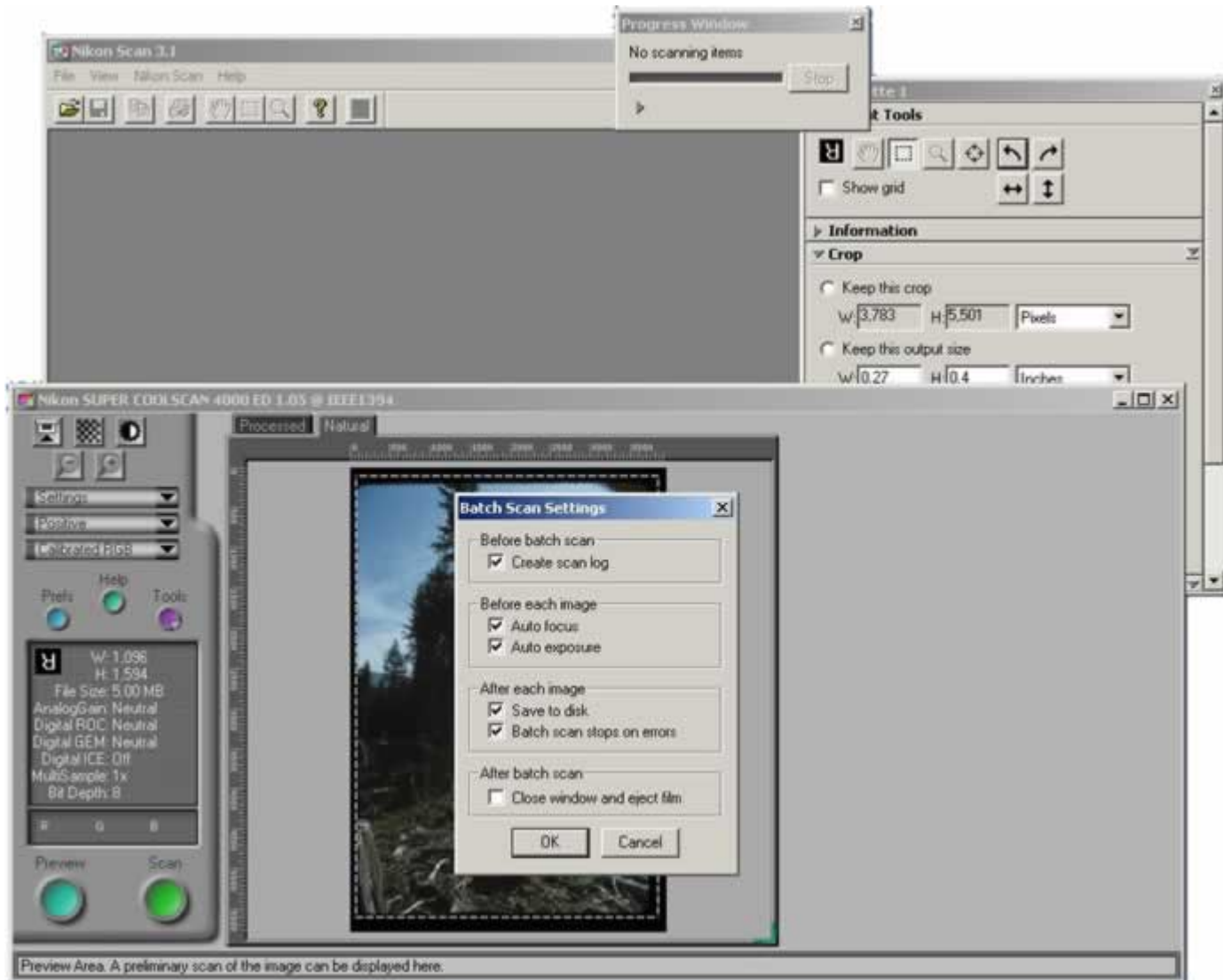
---



8. In the Batch Scan Setting dialog box, check the same boxes as shown in the example below.

# How to use the NIKON COOLSCAN

---



9. In the File Saving Options dialog box there is a File Naming section and a File Saving Section.

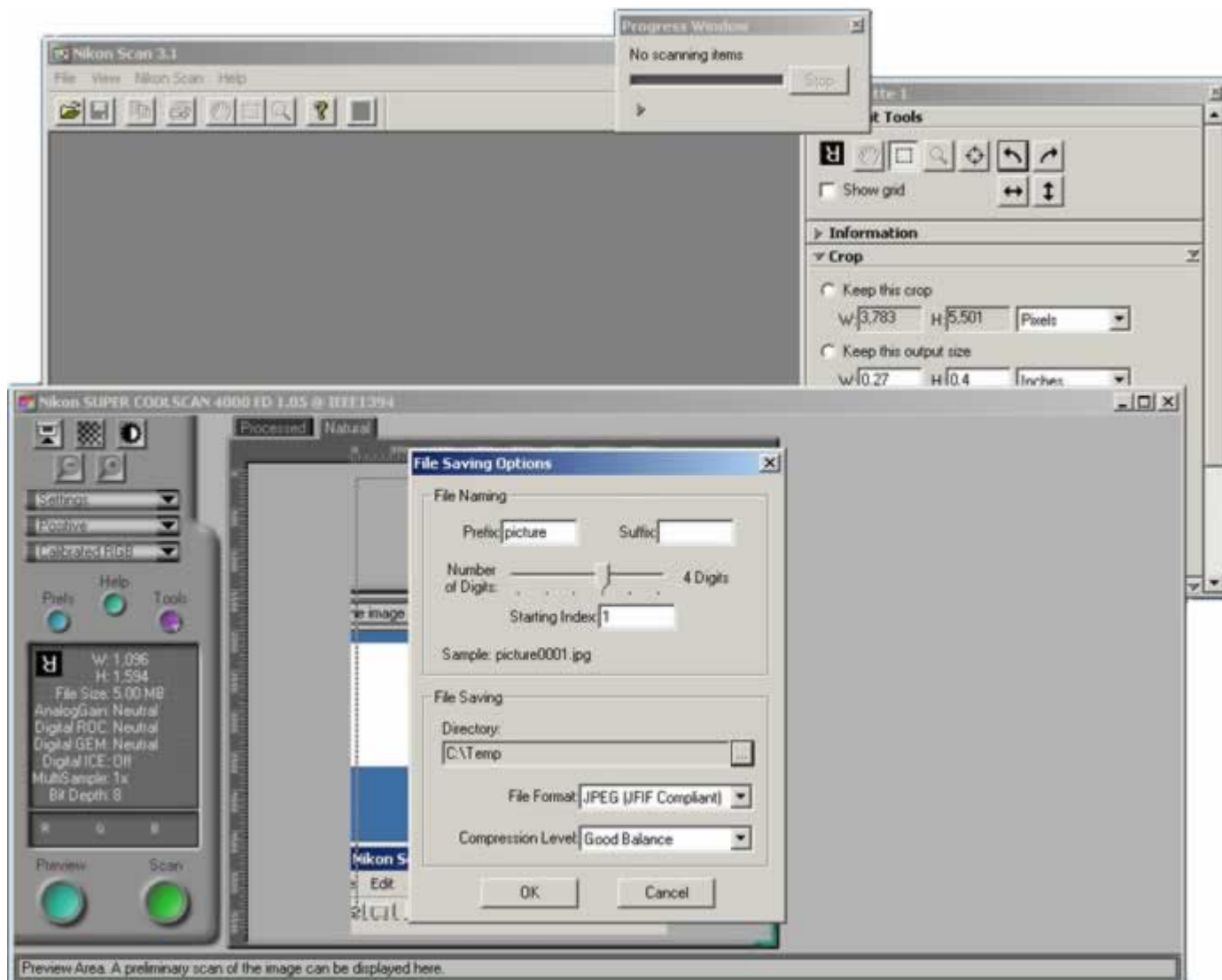
- In the File Naming section, enter something that will help you recognize this batch of slides in the Prefix box. Add a Suffix if you like. Number of digits needs to be at least 2 for a batch of ten or more slides. Starting Index should be 1, unless this is a continuation from a larger set of slides.
- In the File saving section, the Directory is where you will save the images.
- In the File saving section, you need to set your File Format. Use the following File Format Recommendation Table to help you choose from the File Format drop down menu.

# How to use the NIKON COOLSCAN

## File Format Recommendation Table

Image Use	File Format
Web Site	JPEG Smaller
Word Document	JPEG Better Quality
Power Point Projection	JPEG Excellent Quality
8 in by 11 in Printout	TIFF
Full Poster Printout	TIFF

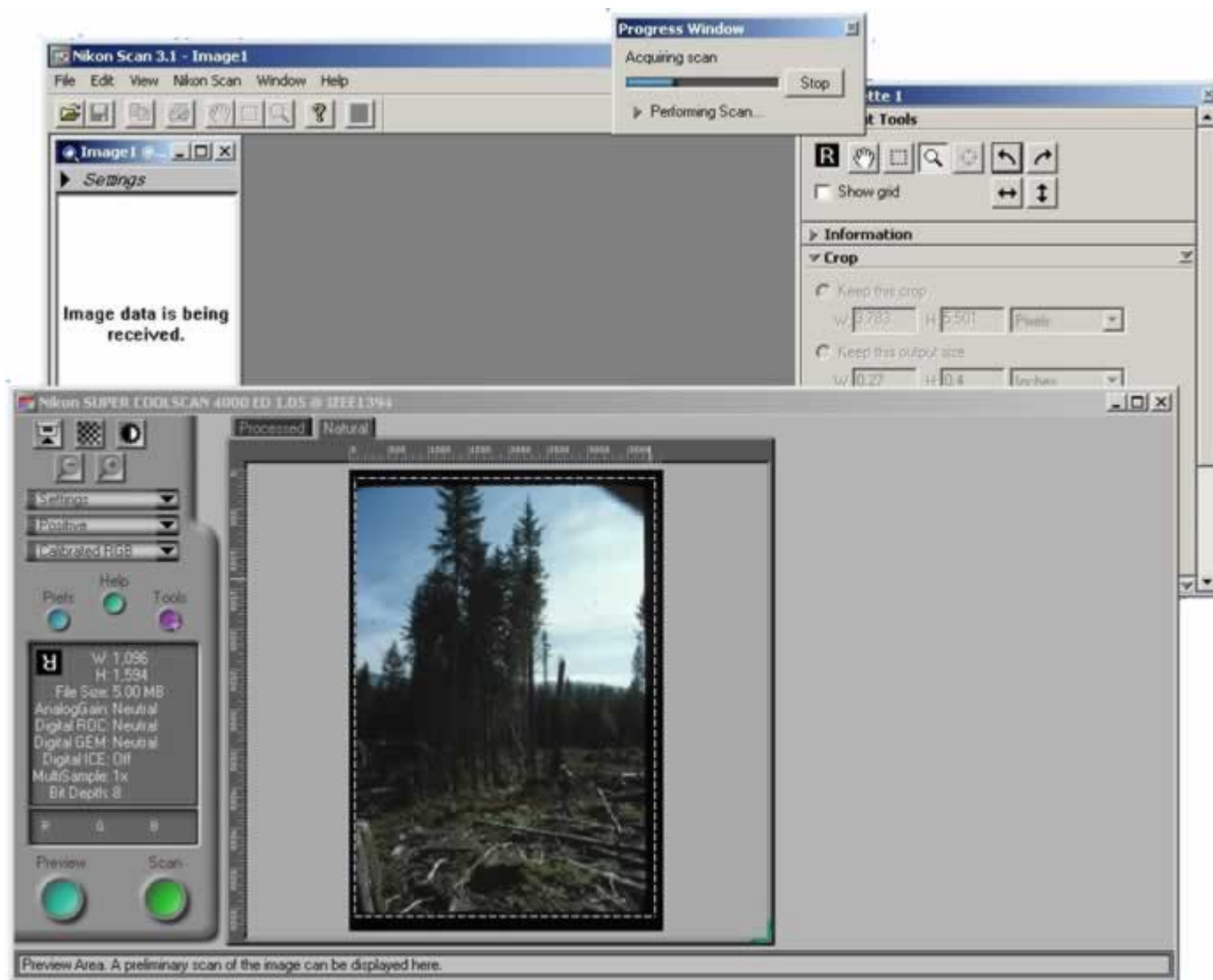
After the appropriate entries have been made, click OK.



# How to use the NIKON COOLSCAN

---

Now your slides are being scanned and saved. It takes about a minute per slide, depending mostly on the resolution settings.



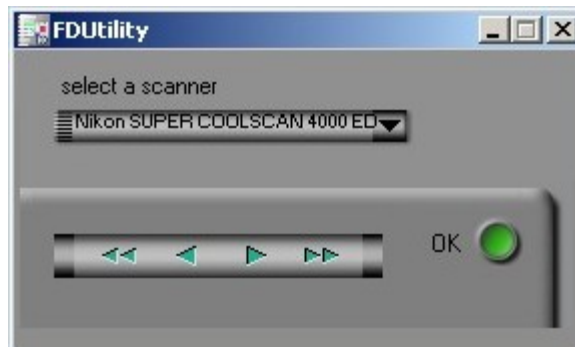
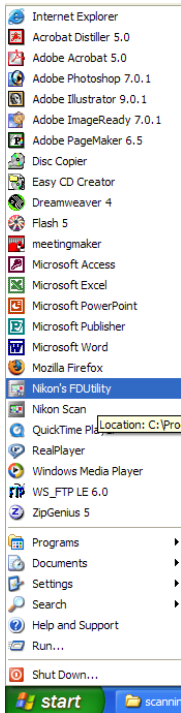
## When slides are jammed:

- Go to the desktop and double click FDUtility.
- Click forward or backward until the jammed slide is ejected, then click OK.
- Put the slides back and start over where you left off. The slides that went through are saved so you only need to start over for the slides that were not scanned.
- The only change to make after a jam is in the File Saving Options dialog box. In the File Naming section change the Starting Index to match the

# How to use the NIKON COOLSCAN

---

next slide (i.e. if the scanner jammed after 14 out of 30 slides were processed, then the starting index should be 15).



If you get this error message, click OK, close the program, start over.

